

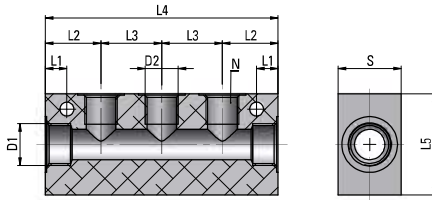
RA 29 S

Ripartitore Singolo

Manifold, Single

Distributer, simple

Verteilblock, einfach



Tipo	D1	D2	N	L1	L2	L3	L4	L5	s	g Δ
29 14 18 S3	G1/4	G1/8	3	4,5	18	18	72	30	20	86
29 14 18 S4	G1/4	G1/8	4	4,5	18	18	90	30	20	110
29 14 18 S5	G1/4	G1/8	5	4,5	18	18	108	30	20	130
29 38 14 S3	G3/8	G1/4	3	8,5	22	24	92	40	25	184
29 38 14 S4	G3/8	G1/4	4	8,5	22	24	116	40	25	238
29 38 14 S5	G3/8	G1/4	5	8,5	22	24	140	40	25	298

Corpo in Alluminio Non Ossidato - Alu body, not anodized - Corps Alu, non anodisé - Alukörper, nicht eloxiert

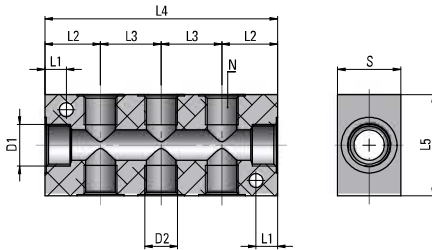
RA 29 D

Ripartitore Doppio

Manifold, Double

Distributeur, double

Verteilblock, zweifach



Tipo	D1	D2	N	L1	L2	L3	L4	L5	s	g Δ
29 14 18 D3	G1/4	G1/8	3+3	4,5	18	18	72	30	20	81
29 14 18 D4	G1/4	G1/8	4+4	4,5	18	18	90	30	20	100
29 14 18 D5	G1/4	G1/8	5+5	4,5	18	18	108	30	20	122
29 38 14 D3	G3/8	G1/4	3+3	8,5	22	24	92	40	25	170
29 38 14 D4	G3/8	G1/4	4+4	8,5	22	24	116	40	25	216
29 38 14 D5	G3/8	G1/4	5+5	8,5	22	24	140	40	25	266

Corpo in Alluminio Non Ossidato - Alu body, not anodized - Corps Alu, non anodisé - Alukörper, nicht eloxiert

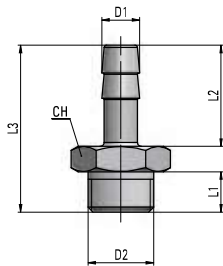
RA 30

Portagomma

Hose Connector

Douille cannelée

Schlauchtülle



Tipo	D1	D2	L1	L2	L3	CH	g Δ
30 03 M5	3	M5x0,8	5	9	17	8	2
30 3,5 M5	3,5	M5x0,8	5	9	17	8	2
30 4,5 M5	4,5	M5x0,8	5	9	17	8	2
30 7,5 18	7,5	G1/8	6	20	30	14	10,5
30 7,5 14	7,5	G1/4	8	20	33	17	17
30 8,5 18	8,5	G1/8	6	20	30	14	11,5
30 9,5 18	9,5	G1/8	6	20	30	14	11
30 9,5 14	9,5	G1/4	8	20	33	17	18
30 9,5 38	9,5	G3/8	9	20	34	19	22
30 12,5 14	12,5	G1/4	8	22	33	17	21
30 12,5 38	12,5	G3/8	9	22	34	19	24
30 12,5 12	12,5	G1/2	10	22	38	24	38
30 17,5 38	17,5	G3/8	9	24	38	19	38
30 17,5 12	17,5	G1/2	10	24	39,5	24	43

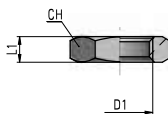
RA 31

Dado

Nut

Ecrou

Überwurfmutter



Tipo	D1	L1	CH	g Δ
31 00 18	G1/8	4,5	14	4
31 00 14	G1/4	5	17	5
31 00 38	G3/8	5,5	19	5
31 00 12	G1/2	6	24	8
31 00 M10x1	M10x1	4	14	3
31 00 M12x1	M12x1	5	16	5
31 00 M14x1	M14x1	5	18	5,5
31 00 M16x1	M16x1	5	20	6
31 00 M20x1,5	M20x1,5	4	27	10,5