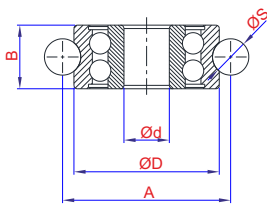


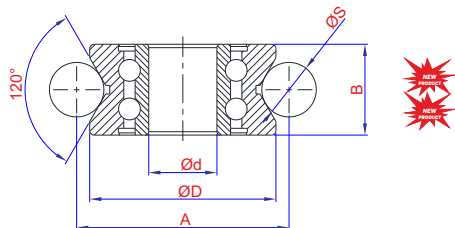
STUD DIMENSIONS

| Bearing Code | Stud Type | Code | M | Ød | A | L | C1 | ØD | F |
|-----------------|---------------|--------------------------|-----|-----|------|------|-----|------|------|
| LFR 50/5-4 KDD | CONCENTRIC | 7.30.050054.008205.04.10 | M4 | Ø5 | 7 | 20,5 | 0,5 | 8 | 0,5 |
| | ECCENTRIC | 7.31.050054.008205.04.10 | | | | | | | |
| LFR 50/8-6 KDD | CONCENTRIC | 7.30.050086.014030.06.10 | M6 | Ø8 | 10 | 30 | 1 | 14 | 2 |
| | ECCENTRIC | 7.31.050086.014030.06.10 | | | | | | | |
| | CONCENTRIC | 7.30.050086.012032.06.10 | M6 | Ø8 | 14 | 32 | 1 | 12 | 4 |
| | ECCENTRIC | 7.31.050086.012032.06.10 | | | | | | | |
| RV 200/8 KDD | CONCENTRIC | 7.30.052008.016415.08.10 | M8 | Ø10 | 14 | 41,5 | 1 | 16 | 4,5 |
| | ECCENTRIC | 7.31.052008.016415.08.10 | | | | | | | |
| LFR 5201/10 KDD | CONCENTRIC | 7.30.520110.185494.10.10 | M10 | Ø12 | 24 | 49,4 | 1 | 18,5 | 8,5 |
| | RV 201/12 KDD | ECCENTRIC | | | | | | | |
| RV 201/12 KDD | CONCENTRIC | 7.30.520112.185051.10.10 | M10 | Ø12 | 25,5 | 51 | 1 | 18,5 | 10,1 |
| | ECCENTRIC | 7.31.520112.185051.10.10 | | | | | | | |
| | CONCENTRIC | 7.30.520112.175063.10.10 | M10 | Ø12 | 38 | 63 | 1 | 17,5 | 22,6 |
| | ECCENTRIC | 7.31.520112.175063.10.10 | | | | | | | |
| | CONCENTRIC | 7.30.520112.185066.10.10 | M10 | Ø12 | 40,5 | 66 | 1 | 17,5 | 25 |
| | ECCENTRIC | 7.31.520112.185066.10.10 | | | | | | | |
| RV 202/15 KDD | CONCENTRIC | 7.30.202152.195060.12.10 | M12 | Ø15 | 33,5 | 60 | 1,5 | 19,5 | 14 |
| | ECCENTRIC | 7.31.202152.195060.12.10 | | | | | | | |
| | CONCENTRIC | 7.30.202152.195064.12.10 | M12 | Ø15 | 37,5 | 64 | 1,5 | 19,5 | 18 |
| | ECCENTRIC | 7.31.202152.195064.12.10 | | | | | | | |
| | CONCENTRIC | 7.30.202152.195068.12.10 | M12 | Ø15 | 42 | 68 | 1,5 | 19,5 | 22,5 |
| | ECCENTRIC | 7.31.202152.195068.12.10 | | | | | | | |
| | CONCENTRIC | 7.30.202152.195074.12.10 | M12 | Ø15 | 47,5 | 74 | 1,5 | 19,5 | 28 |
| | ECCENTRIC | 7.31.202152.195074.12.10 | | | | | | | |
| | CONCENTRIC | 7.30.202152.195054.12.10 | M12 | Ø15 | 27,5 | 54 | 1,5 | 19,5 | 8 |
| | ECCENTRIC | 7.31.202152.195054.12.10 | | | | | | | |
| RV 203/17 KDD | CONCENTRIC | 7.30.203017.026078.14.10 | M14 | Ø17 | 46 | 78 | 1,5 | 26 | 22 |
| | ECCENTRIC | 7.31.203017.026078.14.10 | | | | | | | |



BEARINGS (LFR)

| Code | LFR TYPE | ÜRÜN ADI | S | A | B | D | d |
|------------------|-----------------|------------------------|----|----|------|----|----|
| 4.015.05.50.05 | LFR 50/5-4 KDD | PLASTİK KAPAKLI RULMAN | 4 | 18 | 8 | 16 | 5 |
| 4.015.08.50.06 | LFR 50/8-6 KDD | ÇELİK KAPAKLI RULMAN | 6 | 28 | 11 | 24 | 8 |
| 4.015.12.5201.10 | LFR 5201/10 KDD | ÇELİK KAPAKLI RULMAN | 10 | 41 | 15,8 | 35 | 12 |



BEARINGS (RV)

| Code | RV TYPE | ÜRÜN ADI | S | A | B | D | d |
|------------------|---------------|----------------------|----|------|------|----|----|
| 4.015.15.0200.14 | RV 200/8 KDD | ÇELİK KAPAKLI RULMAN | 8 | 37 | 14 | 32 | 10 |
| 4.015.15.0201.12 | RV 201/12 KDD | ÇELİK KAPAKLI RULMAN | 12 | 43,4 | 15,8 | 35 | 12 |
| 4.015.15.0202.12 | RV 202/15 KDD | ÇELİK KAPAKLI RULMAN | 20 | 55,8 | 20 | 41 | 15 |
| 4.015.17.0203.20 | RV 203/17 KDD | ÇELİK KAPAKLI RULMAN | 20 | 70 | 25 | 58 | 17 |

Preferred Using Areas

Track Roller Bearings are widely used in the guidance systems and linear motion systems. Bearings which as used as to made up guidance on inductioned shaft in linear motions, are 62 HRC hardness. Bearing studs must be used to connect the bearings practically. Eccentric stud are used with purpose of to set the gap between rollers and shaft