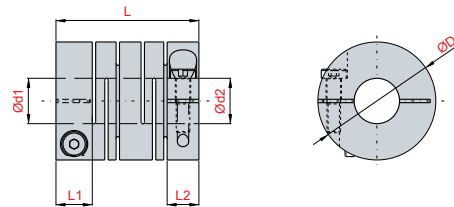
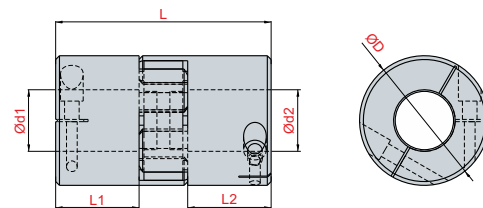


BEAM COUPLING



Code	Type	Dimensions (mm)						Max Angular Offset (°)	Max Axial Offset (mm)	Max Torque (Nm)	Max rpm (rpm)
		Inside Dia d min	Inside Dia d max	Outside Dia D	Lenght L	L1-L2	M				
4.005.02.016.04	JT-16C	5	8	16	23	6,5	2,5	2	+0.4, -0.4	1	24.000
4.005.02.020.04	JT-20C	5	10	20	26	7,5	3	2	+0.4, -0.4	2	20.000
4.005.02.025.04	JT-25C	5	12	25	31	8,5	3	2	+0.5, -0.5	4	15.000
4.005.02.032.04	JT-32C	8	16	32	41	12	4	2	+0.5, -0.5	8	12.000
4.005.02.040.04	JT-40C	8	20	40	56	17	5	2	+0.5, -0.5	16	9.500
4.005.02.050.04	JT-50C	12	25	50	71	21	6	2	+0.5, -0.5	32	7.000
4.005.02.063.04	JT-63C	14	35	63	90	26	8	2	+0.5, -0.5	64	6.000

JAW COUPLING



Code	Type	Dimensions (mm)						Max Angular Offset (°)	Max Axial Offset (mm)	Max Torque (Nm)	Max rpm (rpm)
		Inside Dia d min	Inside Dia d max	Outside Dia D	Lenght L	L1-L2	M				
4.005.02.014.02	JM-14C	3	6	14	22	7	2,5	0,9	+0.6, -0.3	4	25.000
4.005.02.016.02	JM-16C	4	7	16	22	7	2,5	0,9	+0.6, -0.3	4	24.700
4.005.02.025.02	JM-25C	4	12	25	34	11	4	0,9	+0.8, -0.4	18	17.000
4.005.02.030.02	JM-30C	5	16	30	35	11	4	0,9	+1.0, -0.5	25	12.600
4.005.02.040.02	JM-40C	8	24	40	66	25	5	0,9	+1.2, -0.5	34	9.000
4.005.02.055.02	JM-55C	10	28	55	78	30	6	0,9	+1.4, -0.5	120	6.500
4.005.02.095.02	JM-95C	14	55	95	126	50	10	0,9	+2.0, -1.0	900	3.800
4.005.02.105.02	JM-105C	19,80	62	105	140	56	12	0,9	+2.1, -1.0	1.050	3.300
4.005.02.120.02	JM-120C	20	74	120	163	69	12	0,9	+2.2, -1.0	1.370	2.800