

OLL serie - series



Le valvole a leva laterale sono dei distributori a comando manuale con tenuta a strisciamento di tipo ceramico a 4 vie.
Possono essere fissate su un piano utilizzando i quattro fori sul corpo oppure a parete mediante l'apposita ghiera fornita in dotazione.

Manual side lever valves are manually operated 4 ways with ceramic sealing principle.
They can be fixed on a flat surface by mean of 4 holes on the body or across a wall using the nut on the top.

Informazioni tecniche - Technical informations

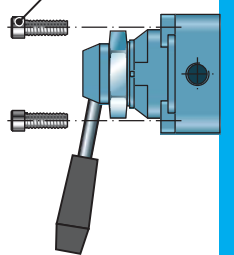
Fluido: aria filtrata 25 µm lubrificata o non lubrificata (se lubrificata usare olio per circuiti pneumatici).
Fluido: filtered air 25 µm lubricated or not lubricated (when lubricated use oil for pneumatic circuits).

Temperatura di esercizio - Working temperature: -5 ÷ +60 °C

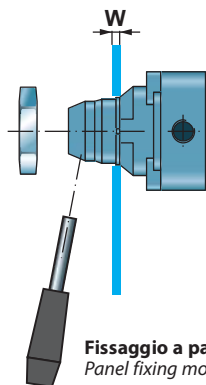
Pressione di esercizio - Working pressure: 0 ÷ 10 bar (0 ÷ 1 MPa)

Esempio di fissaggio - Fixing example

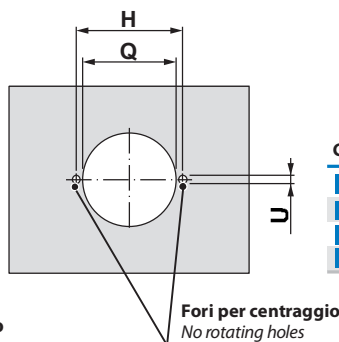
N°4 viti M6
N°4 screws M6



Fissaggio su piano
Base fixing mode

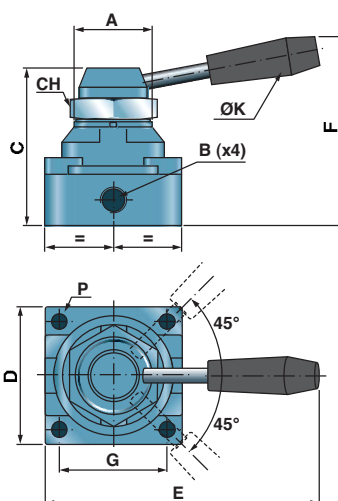
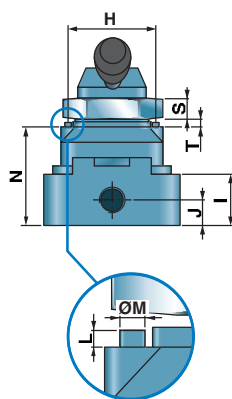


Fissaggio a pannello
Panel fixing mode

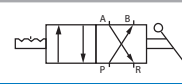


Codice - Code	W max	Q min	U min	H	Viti Screws
OLL42L4C	8	35,2	3,2	40	M6x30
OLL42L2C	9	41,2	3,2	50	M6x40
OLL43L4CC	8	35,2	3,2	40	M6x30
OLL43L2CC	9	41,2	3,2	50	M6x40

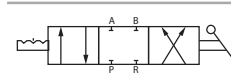
OLL4.L...



OLL42L.C



OLL43L.CC



La valvola è fornita con ghiera di fissaggio a pannello.
Valve is provided complete with nut.

Codice - Code	A	B	C	D	E	F	G	H	I	J	S	L	P	ØM	CH	ØK	T	N	Portata Flow (NL/min)	Massa Mass (g)
OLL42L4C	M34x1,5	G1/4	73	62	120	90	49	40	23	11,5	6	1,7	7	3	45	19	2,5	45	590	420
OLL42L2	M40x1,5	G1/2	94	74	140	110	62	50	32	13,5	6	1,7	7	3	55	19	3	61	1040	420
OLL43L4CC	M34x1,5	G1/4	73	62	120	90	49	40	23	11,5	6	1,7	7	3	45	19	2,5	45	530	660
OLL43L2C	M40x1,5	G1/2	94	74	140	110	62	50	32	13,5	6	1,7	7	3	55	19	3	61	990	660