

LAGP075

Pneumatic power pivot



L	A	G	P	0	7	5	V	E	0	9	0	B	C	
1	2	3	4	5	6	7	8	9						

1 Series	2 Version	3 Size
-----------------	------------------	---------------

LAG = Power pivot with predeterminate pivot rotation angles

P = Pneumatic-standard

075 = 75 Nm Ø80 mm

4 Table position	5 Sensor	6 Pivot rotation angles
-------------------------	-----------------	--------------------------------

V = Vertical 180°

O = Horizontal 90°

Z = Vertical, mirror of V position

P = Horizontal, mirror of O position (Max opening angle 60°)

E = Electronic sensor with M12 swivel connector (DF-U)

A = Electronic sensor with M12 swivel connector + electronic sensor for brake condition detection (2x DF-U)

120 = 120°

090 = 90°

060 = 60°

045 = 45°

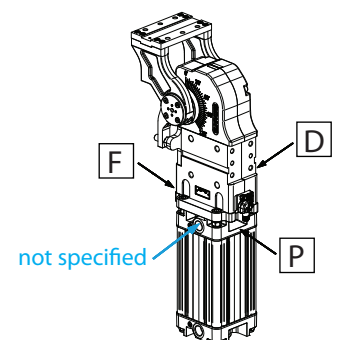
7 Brake system	8 Valve	9 Connections
-----------------------	----------------	----------------------

B = With brake
W = Without brake

C = Integrated valve for cycle time optimization

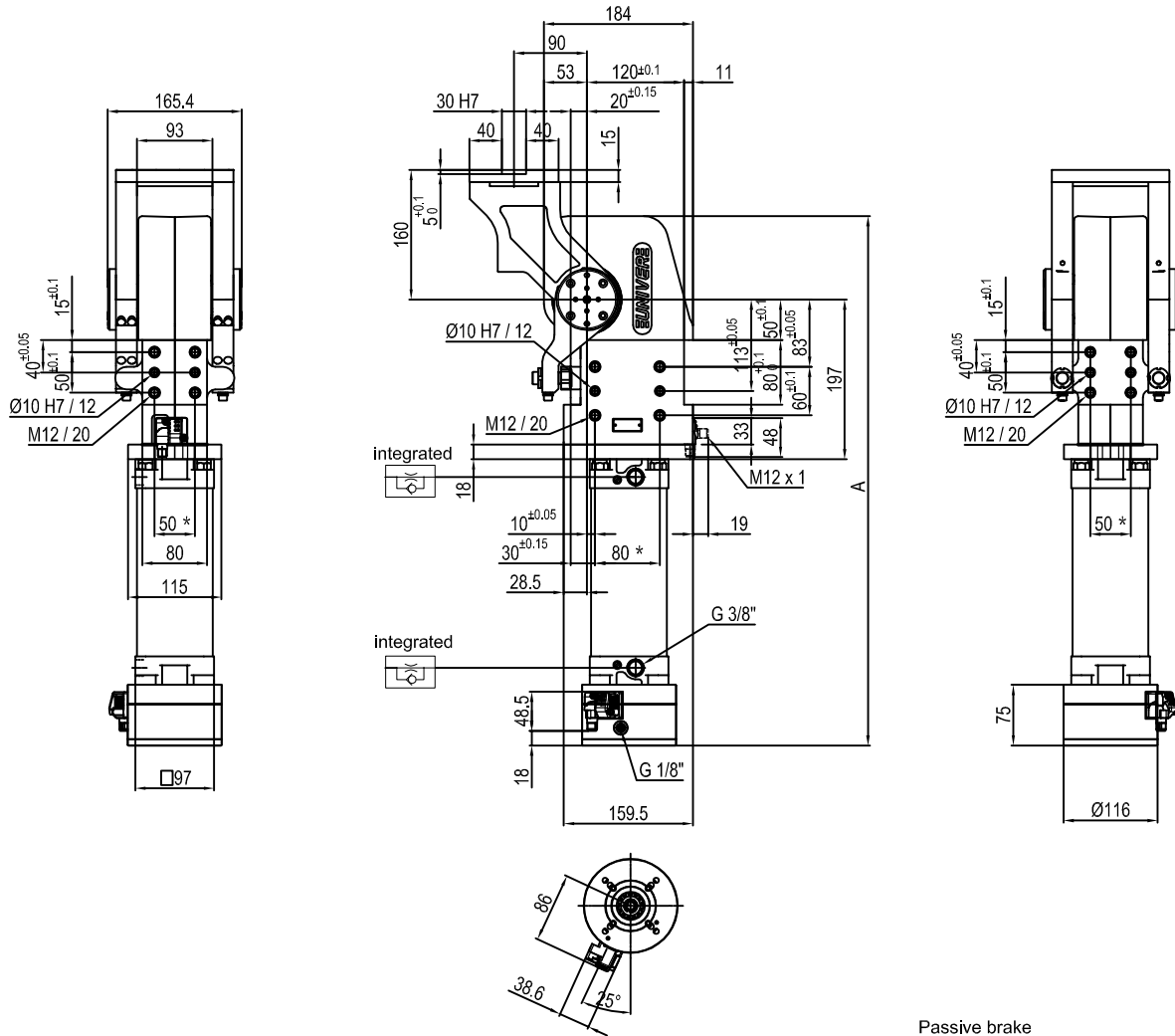
D = Right side (sensor right side)
F = Front side (in front of the sensor)
P = Rear side (same side as sensor)

If not specified, on the left side (sensor left side)



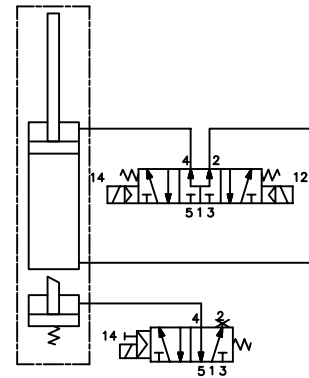
UNIVER SpA recommends that all power pivot applications are validated by UNIVER technical department

Pneumatic power pivot



Pivot rotation in degrees	A
45°	574
60°	588
90°	619
120°	653.5

Passive brake

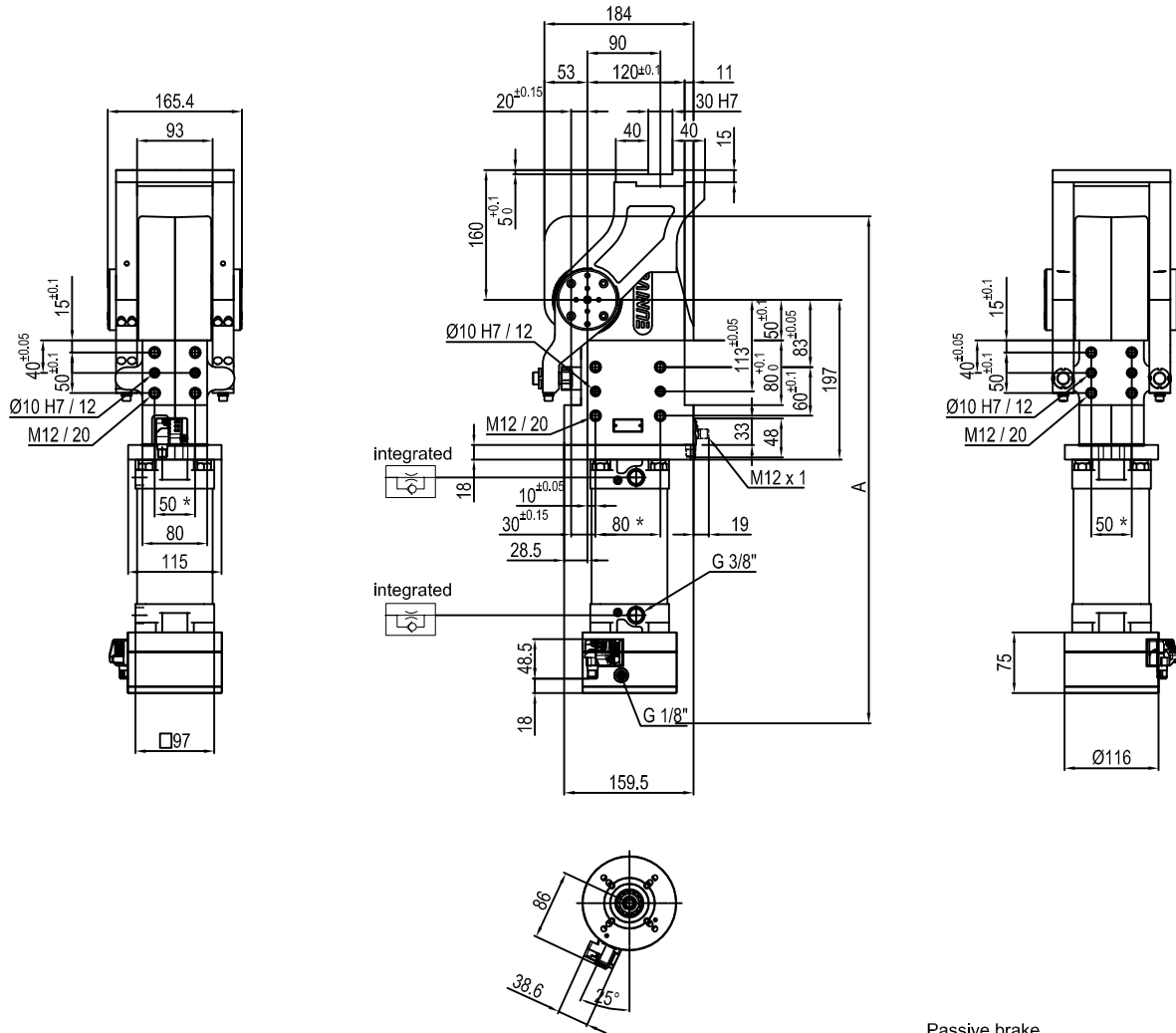


Size	Holding moment	Max. torque at the rotary table 0,55 MPa	Weight
075	6000 Nm	75 Nm	24 Kg

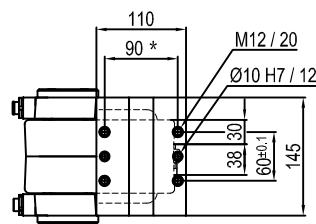
Min./Max. operating pressure: **0,4 / 0,6 MPa**
 Operating temperature: **5° + 45° C**
 Predetermine pivot rotation in degrees: **45° - 60° - 90° - 120°**
 Electronic sensor with M12 swivel connector that can be orientated at 0° or 90°
 Supply voltage: 10+30 V DC
 IP code: **IP 65**

* : TOLERANCE BETWEEN DOWEL HOLES ± 0.02, TO SCREW HOLES ± 0.1

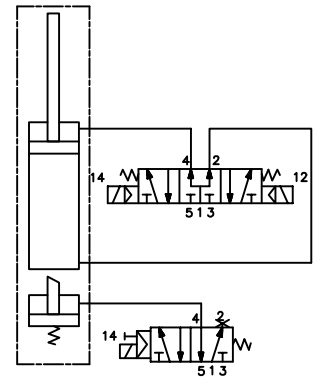
Subject to technical modifications without notice.



Pivot rotation in degrees	A
45°	574
60°	588



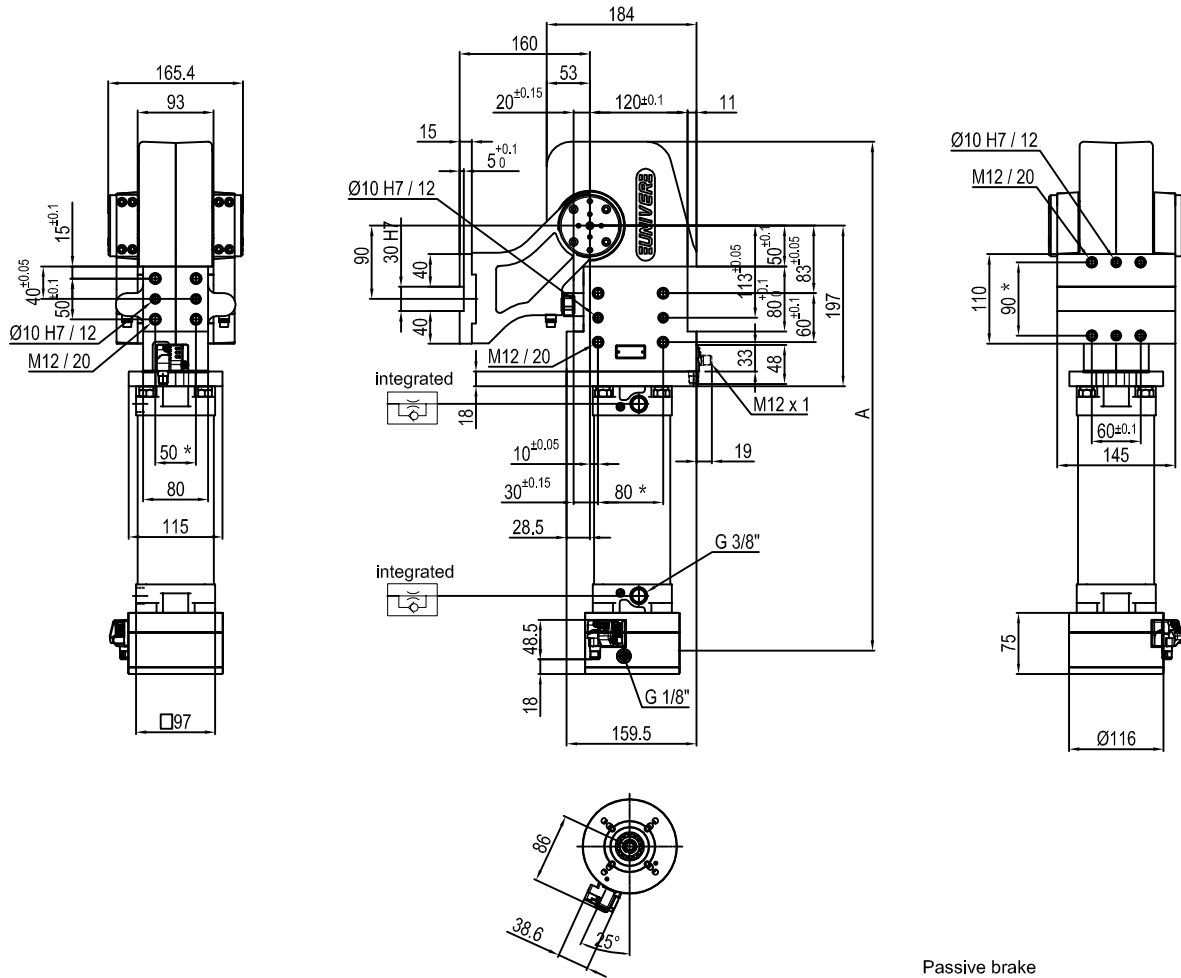
Passive brake



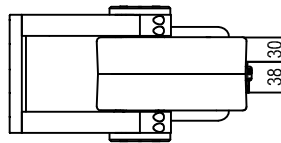
Size	Holding moment	Max. torque at the rotary table 0,55 MPa	Weight
075	6000 Nm	75 Nm	24 Kg

Min./Max. operating pressure: **0,4 / 0,6 MPa**
 Operating temperature: **5° ± 45° C**
 Predetermine pivot rotation in degrees: **45° - 60°**
 Electronic sensor with M12 swivel connector that can be orientated at 0° or 90°
 Supply voltage: 10÷30 V DC
 IP code: **IP 65**

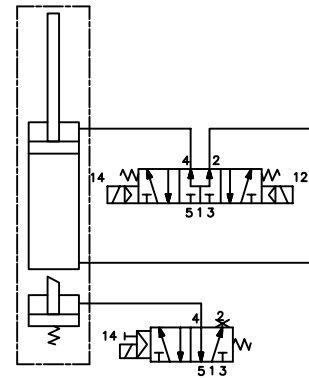
* : TOLERANCE BETWEEN DOWEL HOLES ± 0.02, TO SCREW HOLES ± 0.1



Pivot rotation in degrees	A
45°	574
60°	588
90°	619
120°	653.5



Passive brake

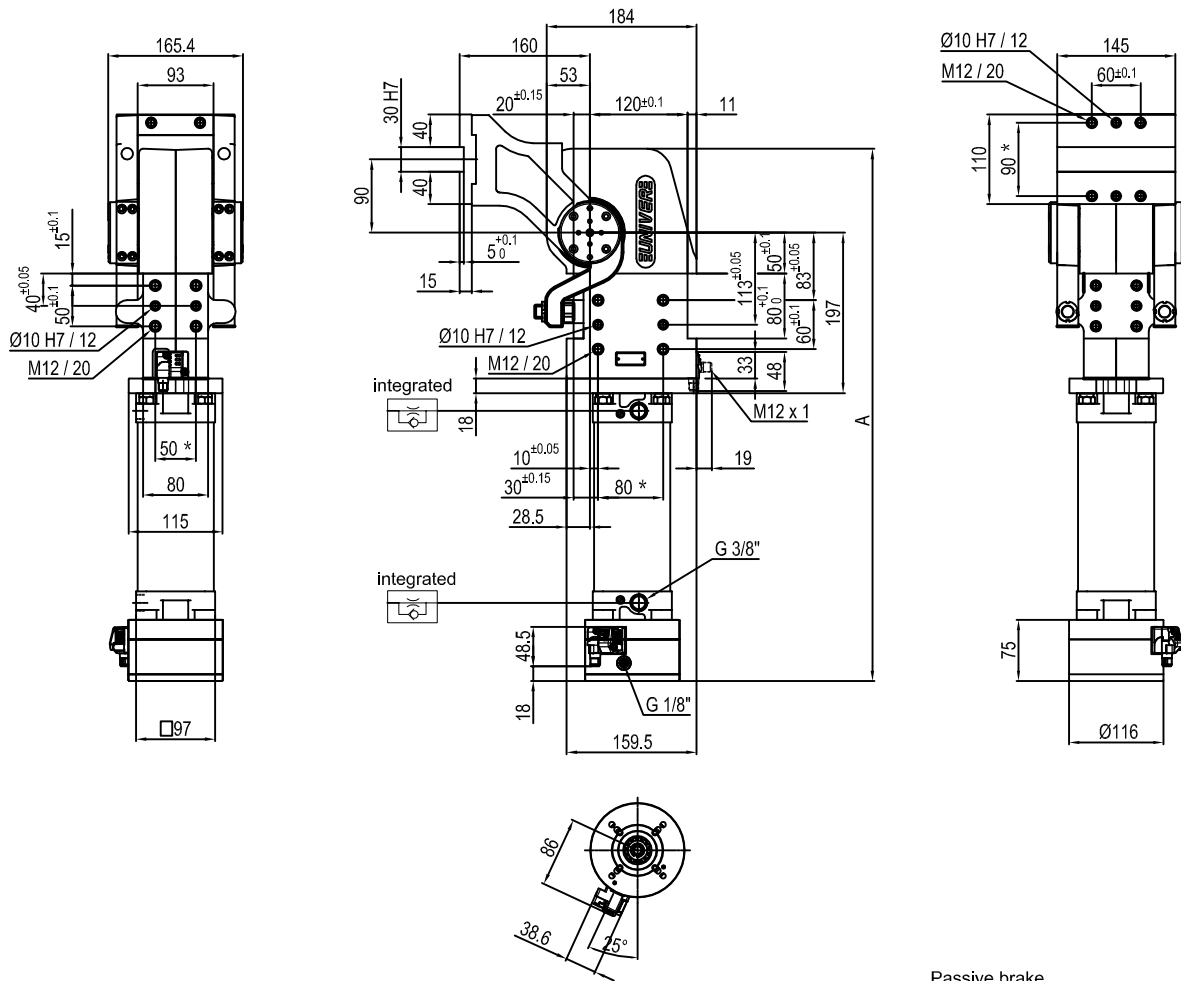


Size	Holding moment	Max. torque at the rotary table 0,55 MPa	Weight
075	6000 Nm	75 Nm	24 Kg

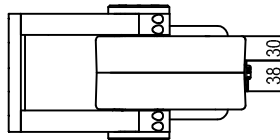
Min./Max. operating pressure: **0,4 / 0,6 MPa**
 Operating temperature: **5° + 45° C**
 Predetermine pivot rotation in degrees: **45° - 60° - 90° - 120°**
 Electronic sensor with M12 swivel connector that can be orientated at 0° or 90°
 Supply voltage: 10-30 V DC
 IP code: **IP 65**

* : TOLERANCE BETWEEN DOWEL HOLES ± 0.02, TO SCREW HOLES ± 0.1

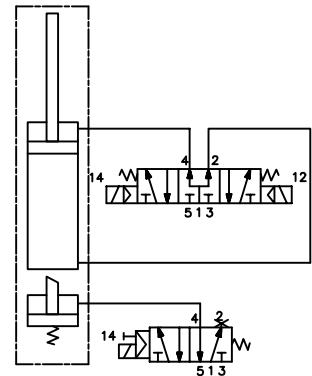
Pneumatic power pivot



Pivot rotation in degrees	A
45°	574
60°	588
90°	619
120°	653.5



Passive brake

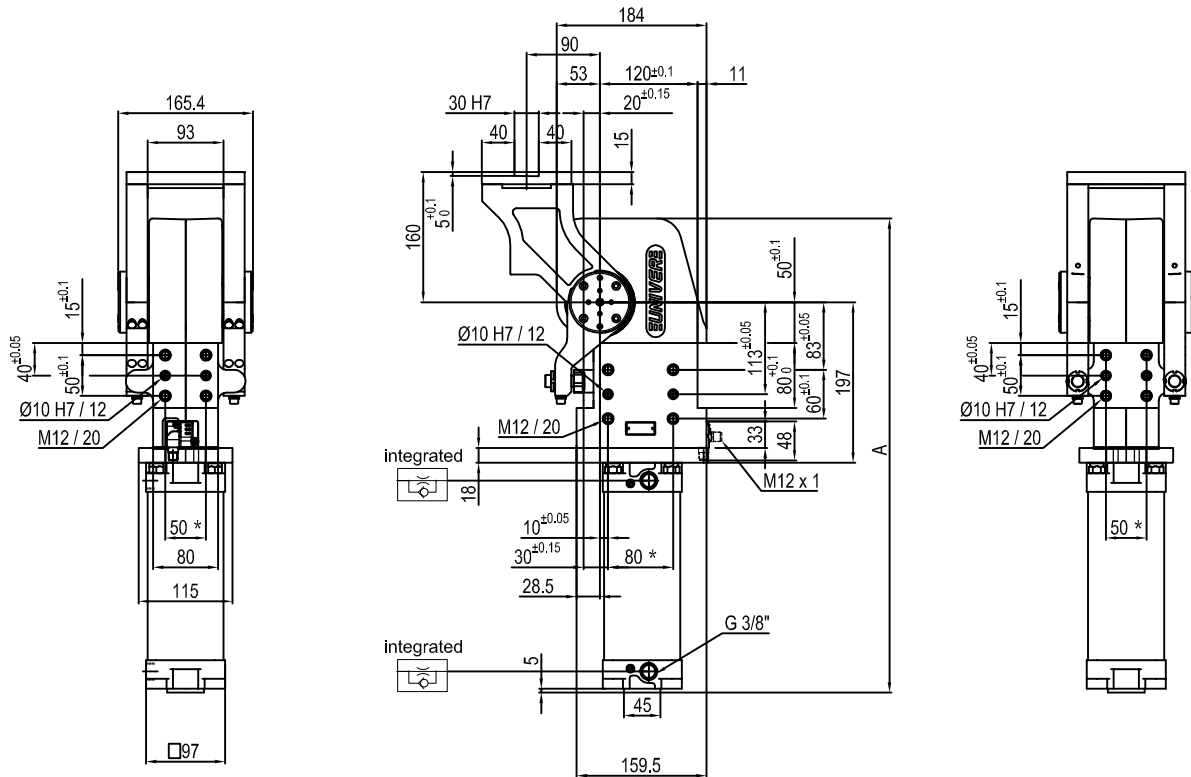


Size	Holding moment	Max. torque at the rotary table 0,55 MPa	Weight
075	6000 Nm	75 Nm	24 Kg

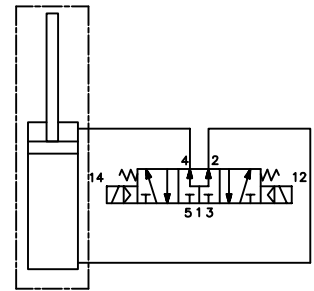
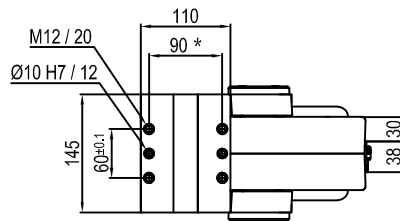
Min./Max. operating pressure: **0,4 / 0,6 MPa**
 Operating temperature: **5° ± 45° C**
 Predetermine pivot rotation in degrees: **45° - 60° - 90° - 120°**
 Electronic sensor with M12 swivel connector that can be orientated at 0° or 90°
 Supply voltage: 10+30 V DC
 IP code: **IP 65**

* : TOLERANCE BETWEEN DOWEL HOLES ± 0,02, TO SCREW HOLES ± 0,1

Subject to technical modifications without notice.



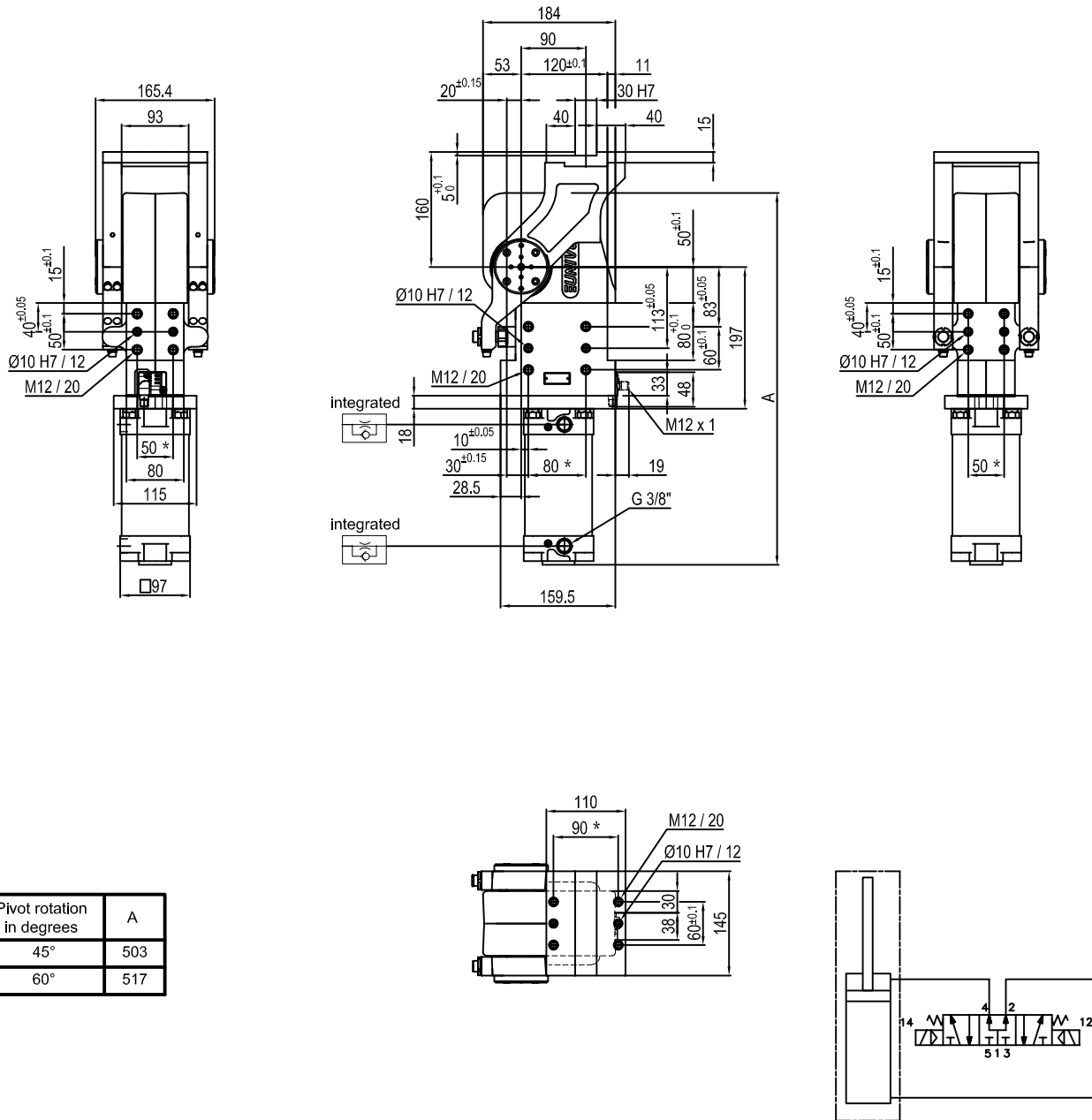
Pivot rotation in degrees	A
45°	503
60°	517
90°	548
120°	582.5



Size	Holding moment	Max. torque at the rotary table 0,55 MPa	Weight
075	6000 Nm	75 Nm	18 Kg

Min./Max. operating pressure: **0,4 / 0,6 MPa**
 Operating temperature: **5° + 45° C**
 Predetermine pivot rotation in degrees: **45° - 60° - 90° - 120°**
 Electronic sensor with M12 swivel connector that can be orientated at 0° or 90°
 Supply voltage: 10-30 V DC
 IP code: **IP 65**

* : TOLERANCE BETWEEN DOWEL HOLES ± 0.02, TO SCREW HOLES ± 0.1

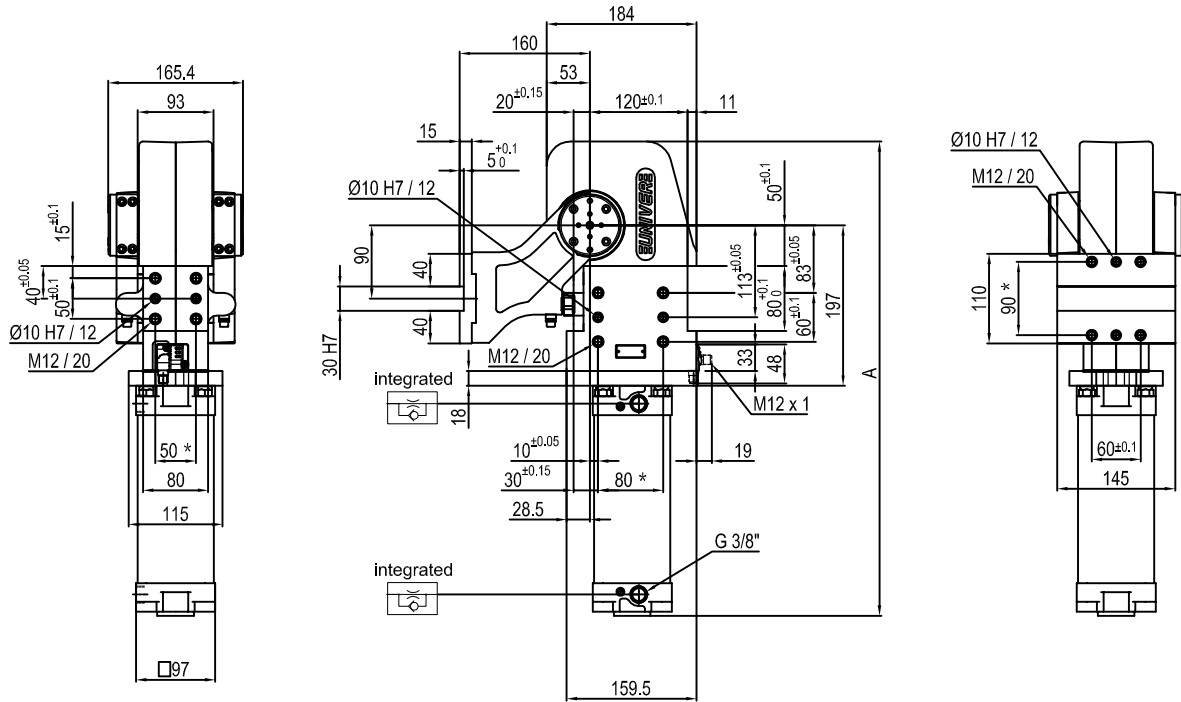


Pivot rotation in degrees	A
45°	503
60°	517

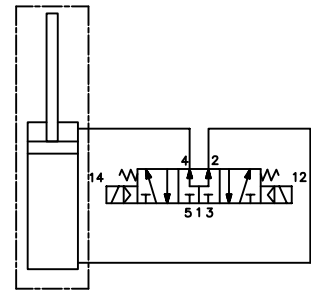
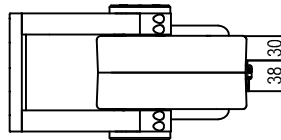
Size	Holding moment	Max. torque at the rotary table 0,55 MPa	Weight
075	6000 Nm	75 Nm	18 Kg

Min./Max. operating pressure: **0,4 / 0,6 MPa**
 Operating temperature: **5° + 45° C**
 Predeterminate pivot rotation in degrees: **45° - 60°**
 Electronic sensor with M12 swivel connector that can be orientated at 0° or 90°
 Supply voltage: 10+30 V DC
 IP code: **IP 65**

* : TOLERANCE BETWEEN DOWEL HOLES ± 0.02, TO SCREW HOLES ± 0.1



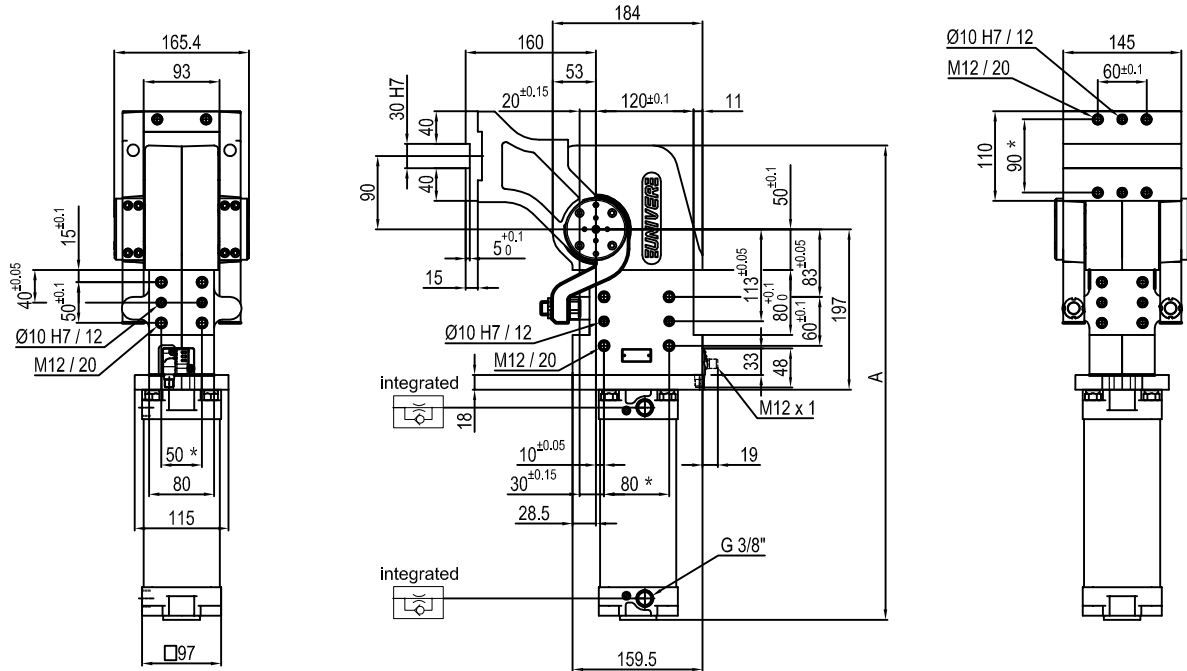
Pivot rotation in degrees	A
45°	503
60°	517
90°	548
120°	582.5



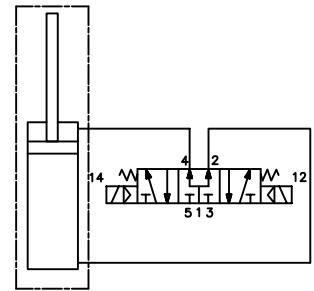
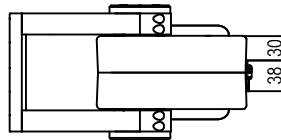
Size	Holding moment	Max. torque at the rotary table 0,55 MPa	Weight
075	6000 Nm	75 Nm	18 Kg

Min./Max. operating pressure: **0,4 / 0,6 MPa**
 Operating temperature: **5° + 45° C**
 Predeterminate pivot rotation in degrees: **45° - 60° - 90° - 120°**
 Electronic sensor with M12 swivel connector that can be orientated at 0° or 90°
 Supply voltage: 10÷30 V DC
 IP code: **IP 65**

* : TOLERANCE BETWEEN DOWEL HOLES ± 0.02, TO SCREW HOLES ± 0.1



Pivot rotation in degrees	A
45°	503
60°	517
90°	548
120°	582.5



Size	Holding moment	Max. torque at the rotary table 0,55 MPa	Weight
075	6000 Nm	75 Nm	18 Kg

Min./Max. operating pressure: **0,4 / 0,6 MPa**
 Operating temperature: **5° + 45° C**
 Predetermine pivot rotation in degrees: **45° - 60° - 90° - 120°**
 Electronic sensor with M12 swivel connector that can be orientated at 0° or 90°
 Supply voltage: 10÷30 V DC
 IP code: **IP 65**

* : TOLERANCE BETWEEN DOWEL HOLES ± 0.02, TO SCREW HOLES ± 0.1

Subject to technical modifications without notice.