

LAGP300

Pneumatic power pivot



L	A	G	P	3	0	0	V	E	0	9	0	B	C	
1	2	3	4	5	6	7	8	9						

1 Series	2 Version	3 Size
-----------------	------------------	---------------

LAG = Power pivot with predetermine pivot rotation angles

P = Pneumatic-standard

300 = 300 Nm Ø160 mm

4 Table position	5 Sensor	6 Pivot rotation angles
-------------------------	-----------------	--------------------------------

V = Vertical 180°
O = Horizontal 90°
Z = Vertical, mirror of V position
P = Horizontal, mirror of O position (Max opening angle 60°)

E = Electronic sensor with M12 swivel connector (DF-U)
A = Electronic sensor with M12 swivel connector + electronic sensor for brake condition detection (2x DF-U)

120 = 120°
090 = 90°
060 = 60°
045 = 45°

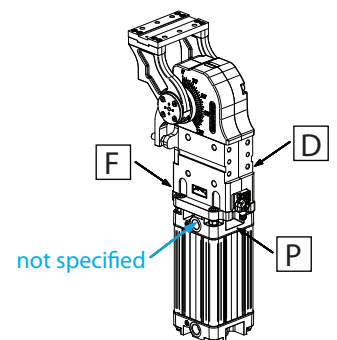
7 Brake system	8 Valve	9 Connections
-----------------------	----------------	----------------------

B = With brake
W = Without brake

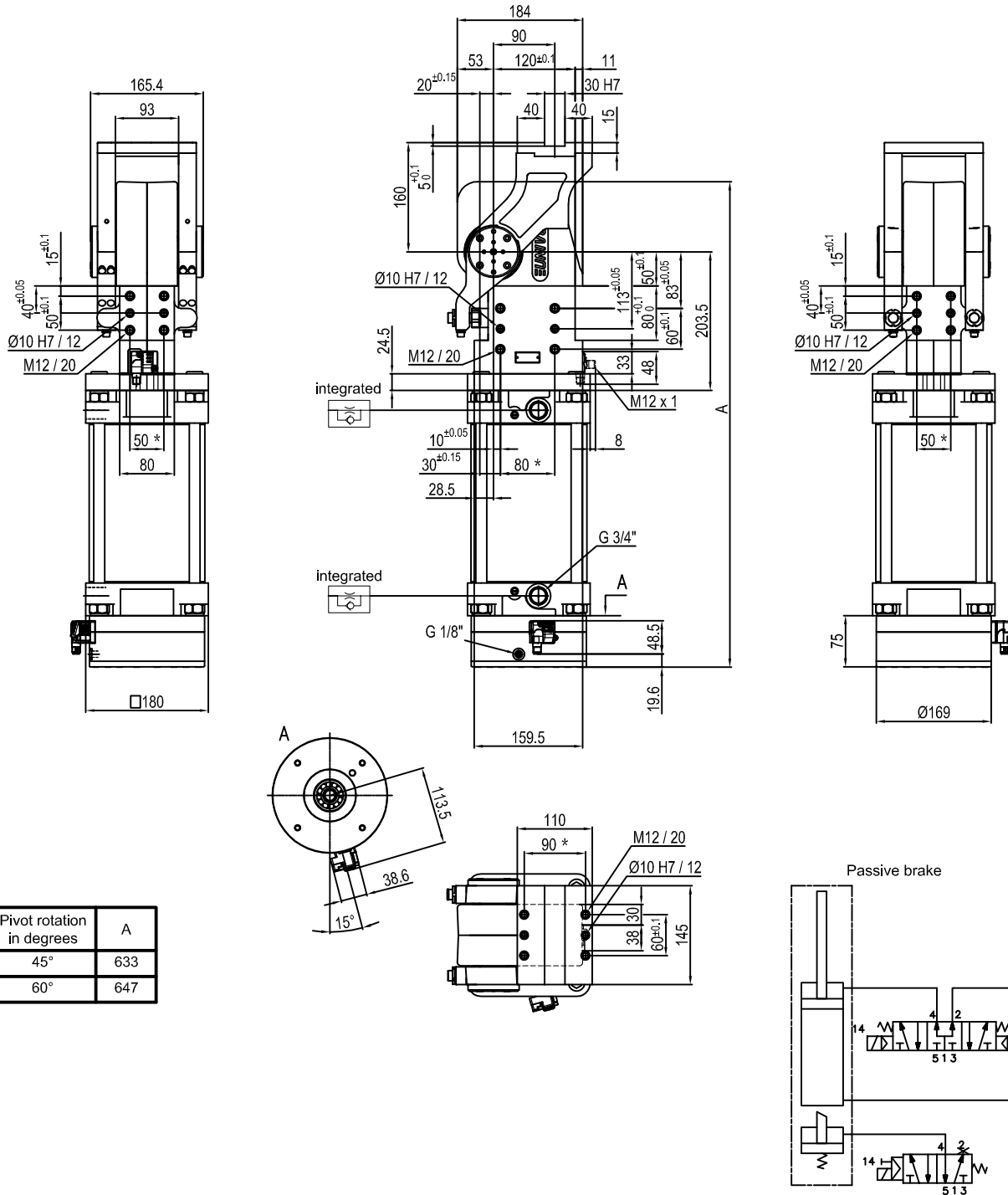
C = Integrated valve for cycle time optimization

D = Right side (sensor right side)
F = Front side (in front of the sensor)
P = Rear side (same side as sensor)

If not specified, on the left side (sensor left side)



UNIVER SpA recommends that all power pivot applications are validated by UNIVER technical department

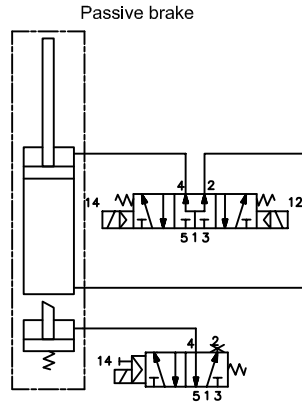
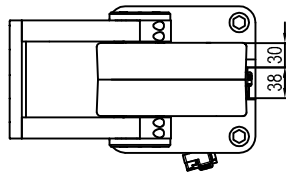
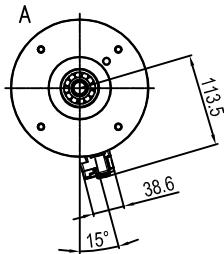
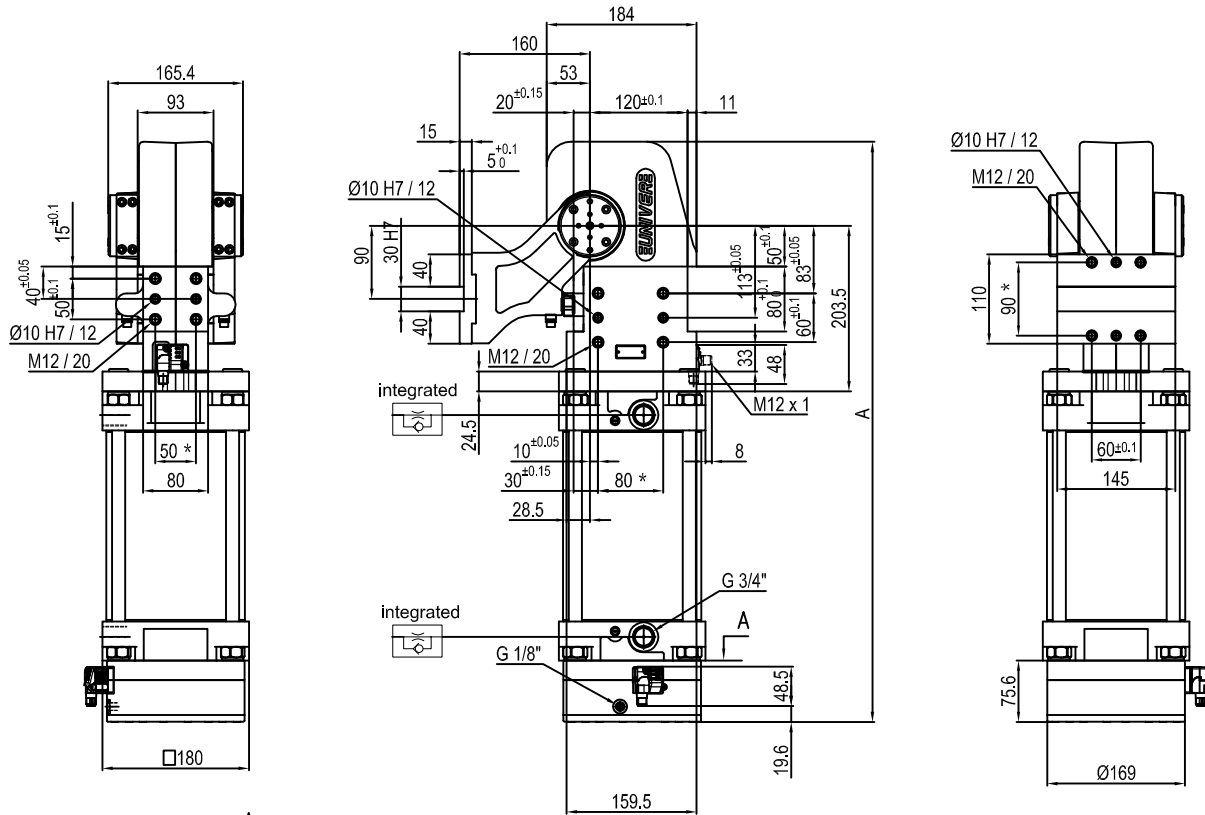


Pivot rotation in degrees	A
45°	633
60°	647

Size	Holding moment	Max. torque at the rotary table 0,55 MPa	Weight
300	6000 Nm	300 Nm	39.3 Kg

Min./Max. operating pressure: **0,4 / 0,6 MPa**
 Operating temperature: **5° + 45° C**
 Predetermine pivot rotation in degrees: **45° - 60°**
 Electronic sensor with M12 swivel connector that can be orientated at 0° or 90°
 Supply voltage: 10+30 V DC
 IP code: **IP 65**

* : TOLERANCE BETWEEN DOWEL HOLES ± 0.02, TO SCREW HOLES ± 0.1

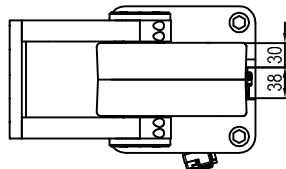
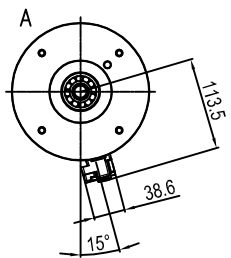
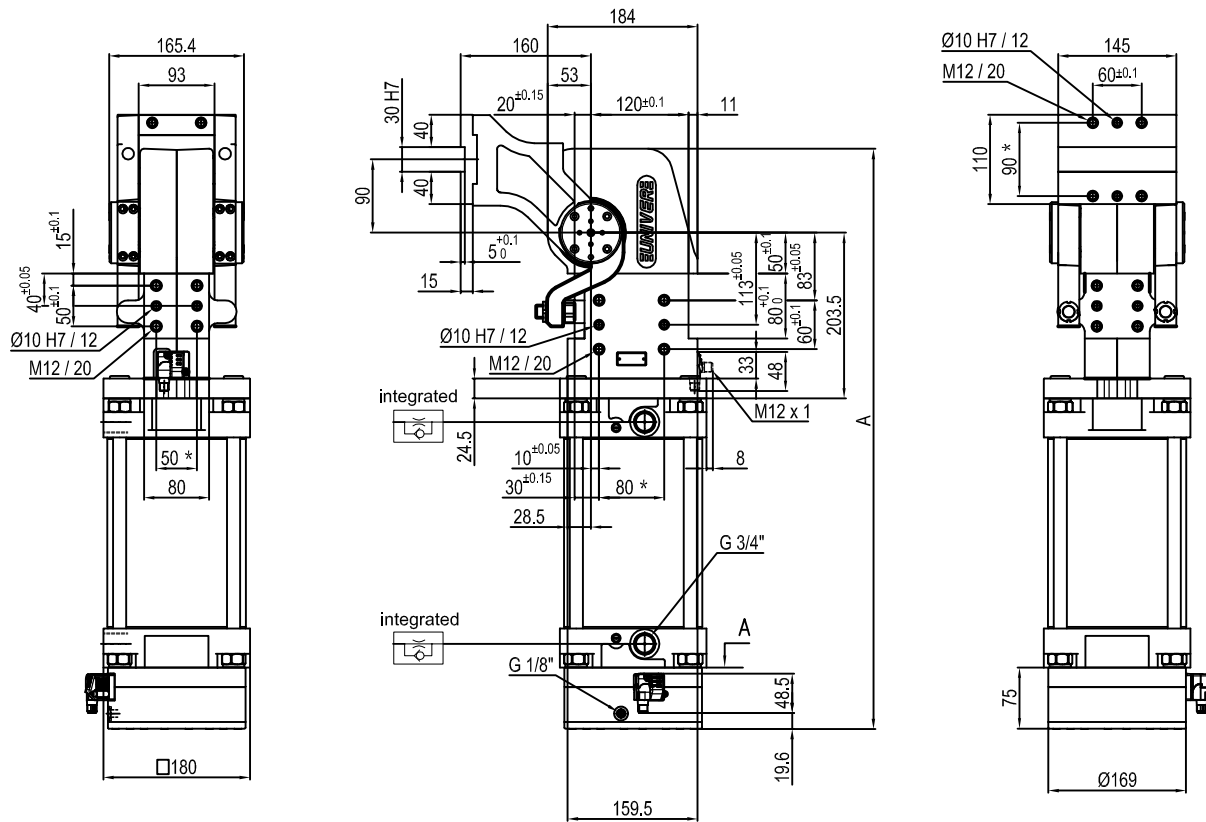


Pivot rotation in degrees	A
45°	633
60°	647
90°	678
120°	712

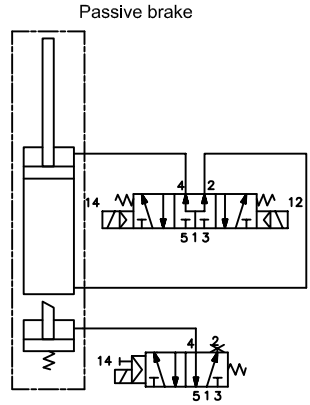
Size	Holding moment	Max. torque at the rotary table 0,55 MPa	Weight
300	6000 Nm	300 Nm	38.4 Kg

Min./Max. operating pressure: **0,4 / 0,6 MPa**
 Operating temperature: **5° ÷ 45° C**
 Predetermine pivot rotation in degrees: **45° - 60° - 90° - 120°**
 Electronic sensor with M12 swivel connector that can be orientated at 0° or 90°
 Supply voltage: 10-30 V DC
 IP code: **IP 65**

* : TOLERANCE BETWEEN DOWEL HOLES ± 0.02, TO SCREW HOLES ± 0.1



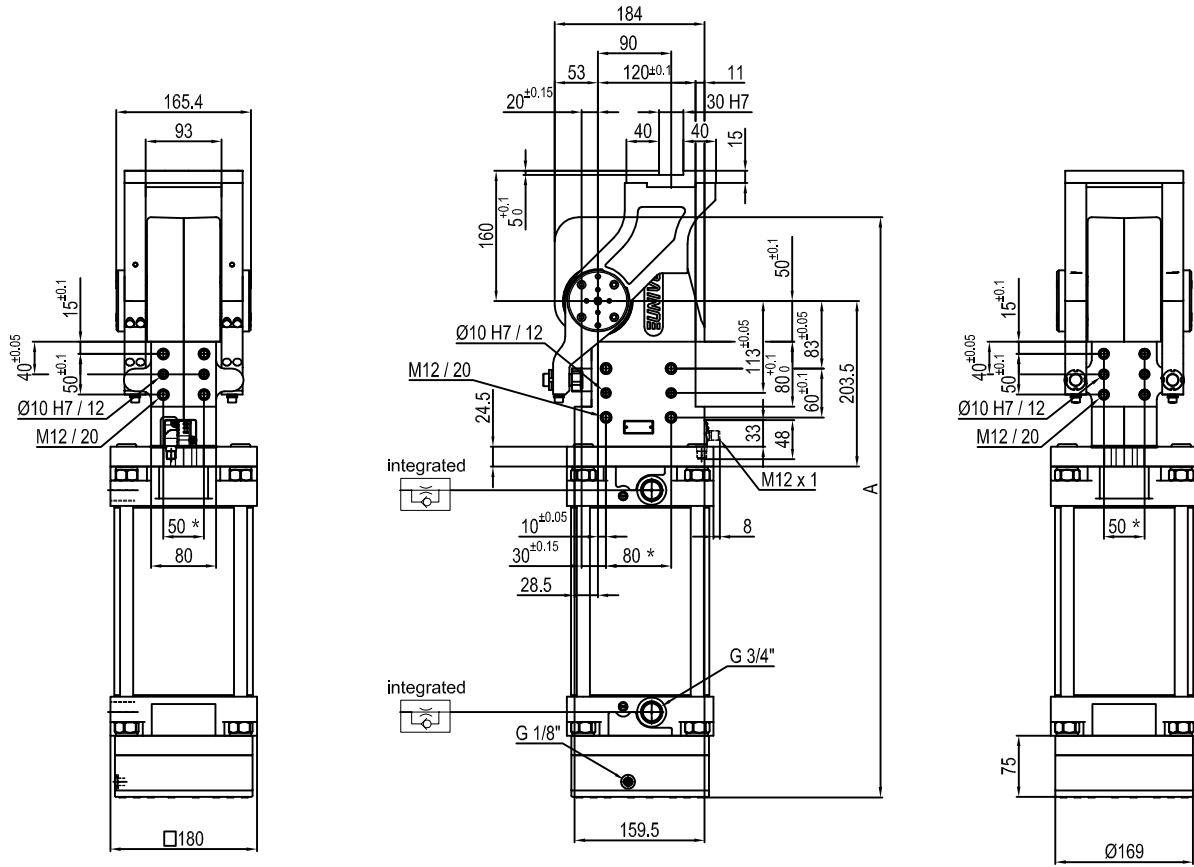
Pivot rotation in degrees	A
45°	633
60°	647
90°	678
120°	712



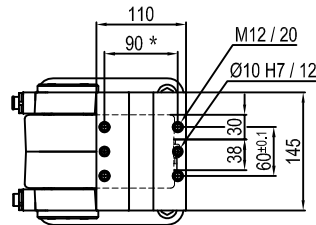
Size	Holding moment	Max. torque at the rotary table 0,55 MPa	Weight
300	6000 Nm	300 Nm	39.5 Kg

Min./Max. operating pressure: 0,4 / 0,6 MPa
 Operating temperature: 5° + 45° C
 Predetermine pivot rotation in degrees: 45° - 60° - 90° - 120°
 Electronic sensor with M12 swivel connector that can be orientated at 0° or 90°
 Supply voltage: 10-30 V DC
 IP code: IP 65

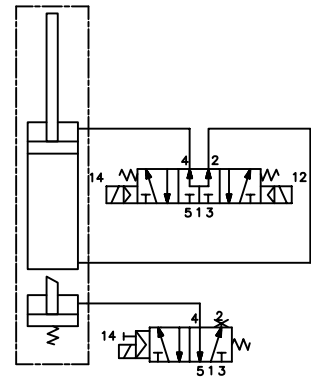
* : TOLERANCE BETWEEN DOWEL HOLES ± 0.02, TO SCREW HOLES ± 0.1



Pivot rotation in degrees	A
45°	633
60°	647



Passive brake



Size	Holding moment	Max. torque at the rotary table 0,55 MPa	Weight
300	6000 Nm	300 Nm	39.3 Kg

Min./Max. operating pressure: 0,4 / 0,6 MPa

Operating temperature: 5° + 45° C

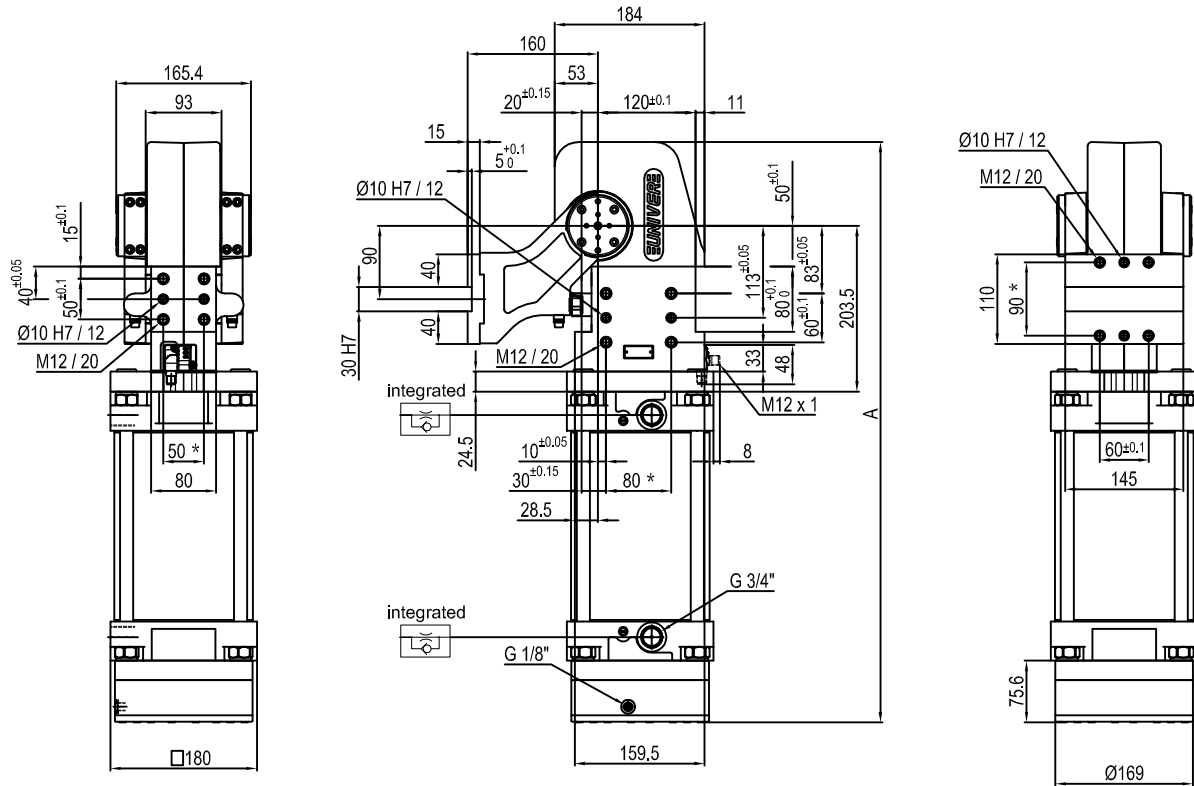
Predetermine pivot rotation in degrees: 45° - 60°

Electronic sensor with M12 swivel connector that can be orientated at 0° or 90°

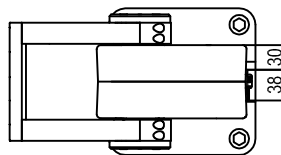
Supply voltage: 10÷30 V DC

IP code: IP 65

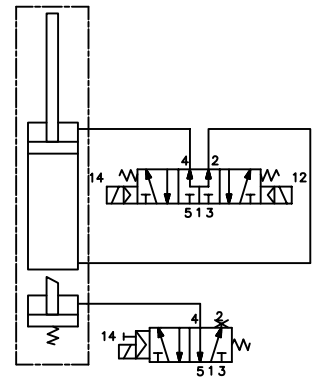
* : TOLERANCE BETWEEN DOWEL HOLES ± 0.02, TO SCREW HOLES ± 0.1



Pivot rotation in degrees	A
45°	633
60°	647
90°	678
120°	712



Passive brake



Size	Holding moment	Max. torque at the rotary table 0,55 MPa	Weight
300	6000 Nm	300 Nm	38.4 Kg

Min./Max. operating pressure: **0,4 / 0,6 MPa**

Operating temperature: **5° + 45° C**

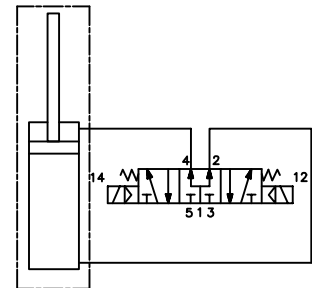
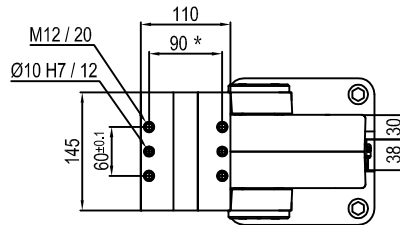
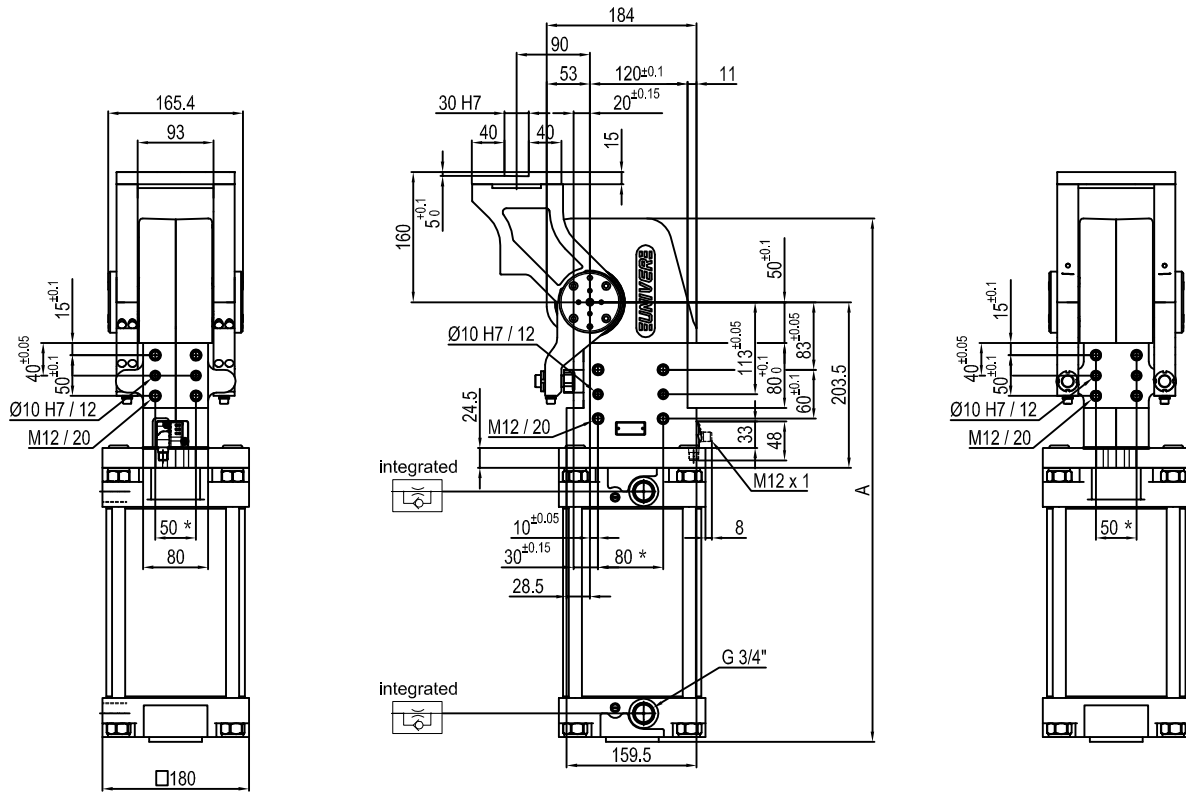
Predetermine pivot rotation in degrees: **45° - 60° - 90° - 120°**

Electronic sensor with M12 swivel connector that can be orientated at 0° or 90°

Supply voltage: **10+30 V DC**

IP code: **IP 65**

* : TOLERANCE BETWEEN DOWEL HOLES ± 0.02, TO SCREW HOLES ± 0.1



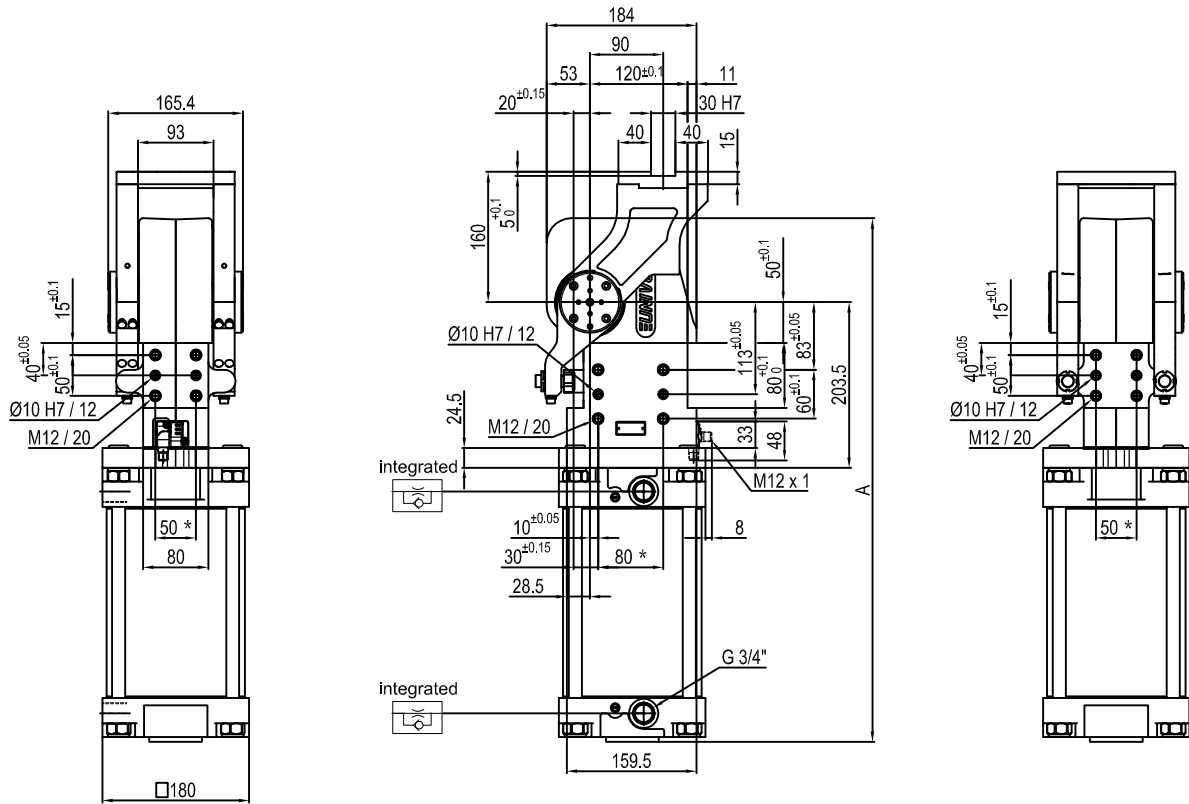
Pivot rotation in degrees	A
45°	564
60°	578
90°	609
120°	643

Size	Holding moment	Max. torque at the rotary table 0,55 MPa	Weight
300	6000 Nm	300 Nm	33.3 Kg

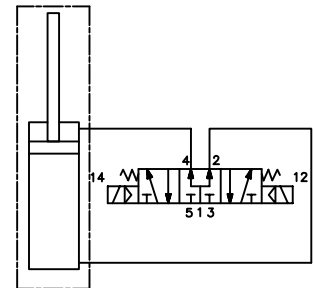
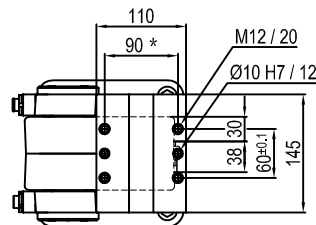
Min./Max. operating pressure: **0,4 / 0,6 MPa**
 Operating temperature: **5° + 45° C**
 Predetermine pivot rotation in degrees: **45° - 60° - 90° - 120°**
 Electronic sensor with M12 swivel connector that can be orientated at 0° or 90°
 Supply voltage: 10÷30 V DC
 IP code: **IP 65**

* : TOLERANCE BETWEEN DOWEL HOLES ± 0.02, TO SCREW HOLES ± 0.1

Subject to technical modifications without notice.



Pivot rotation in degrees	A
45°	564
60°	578



Size	Holding moment	Max. torque at the rotary table 0,55 MPa	Weight
300	6000 Nm	300 Nm	33.3 Kg

Min./Max. operating pressure: **0,4 / 0,6 MPa**

Operating temperature: **5° + 45° C**

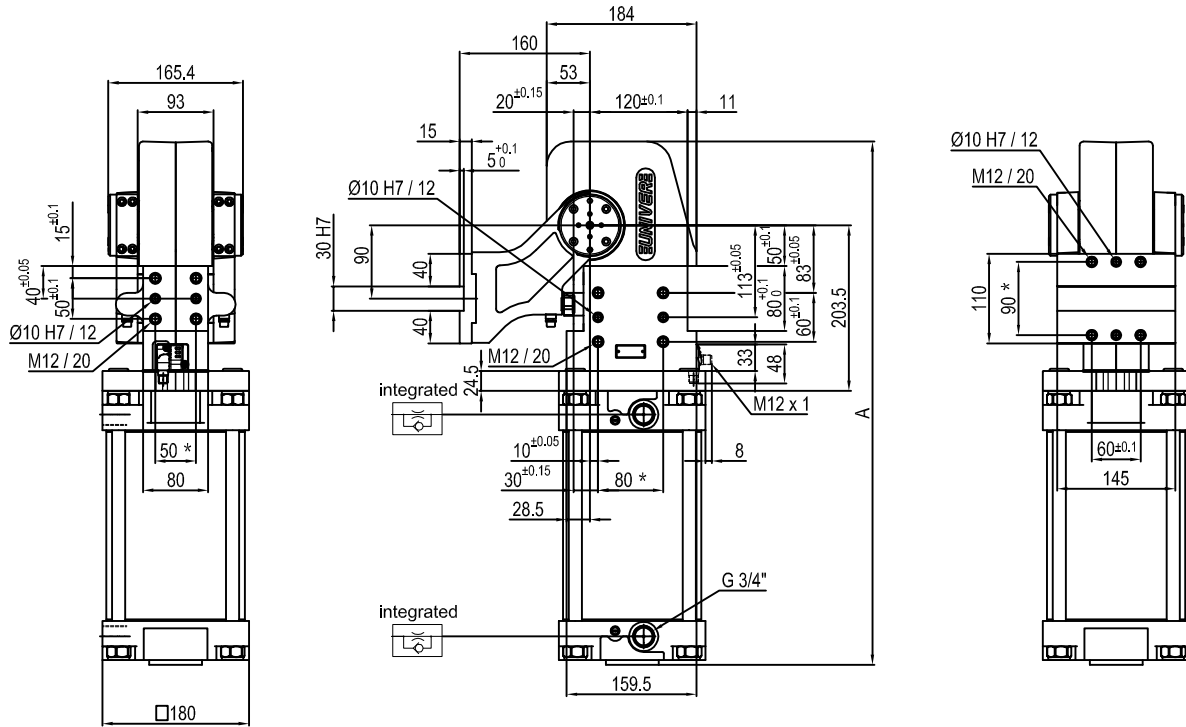
Predetermine pivot rotation in degrees: **45° - 60°**

Electronic sensor with M12 swivel connector that can be orientated at 0° or 90°

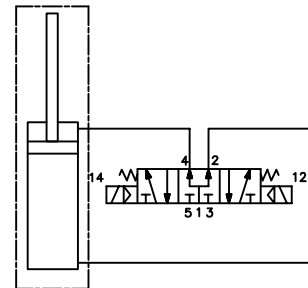
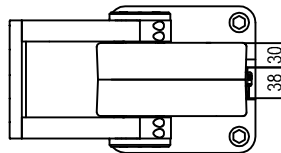
Supply voltage: 10÷30 V DC

IP code: **IP 65**

* : TOLERANCE BETWEEN DOWEL HOLES ± 0.02, TO SCREW HOLES ± 0.1



Pivot rotation in degrees	A
45°	564
60°	578
90°	609
120°	643



Size	Holding moment	Max. torque at the rotary table 0,55 MPa	Weight
300	6000 Nm	300 Nm	33.3 Kg

Min./Max. operating pressure: 0,4 / 0,6 MPa

Operating temperature: 5° ± 45° C

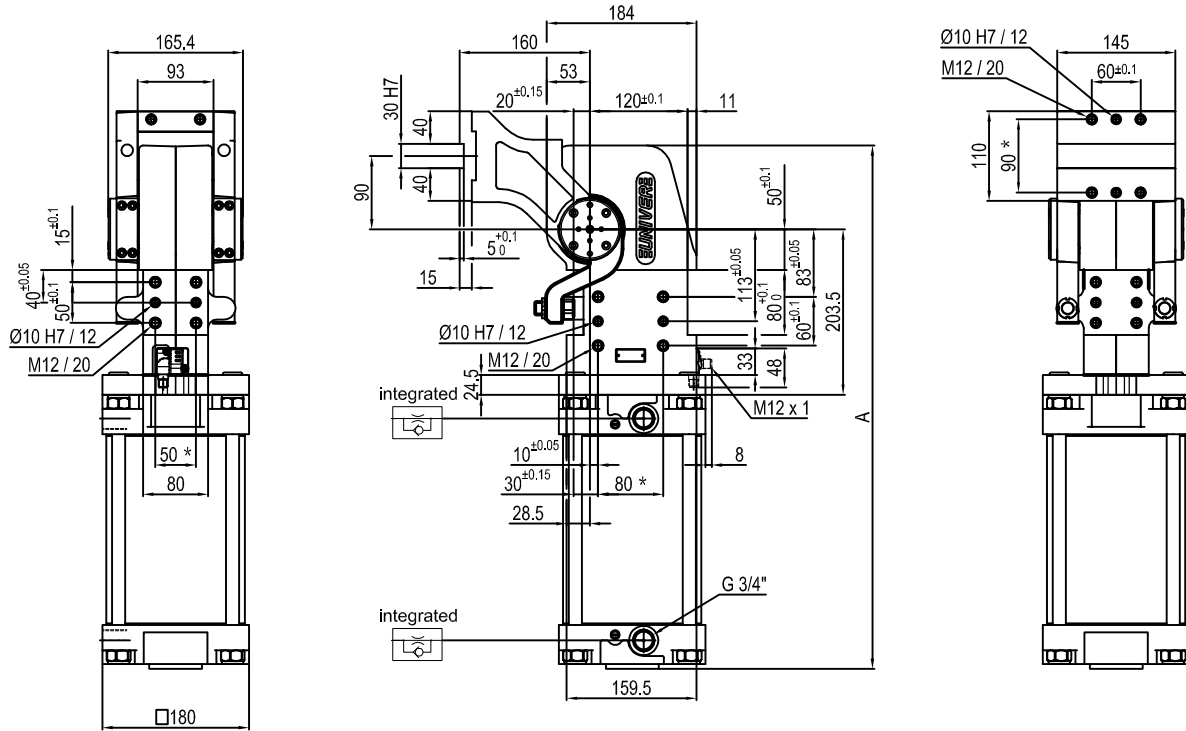
Predetermine pivot rotation in degrees: 45° - 60° - 90° - 120°

Electronic sensor with M12 swivel connector that can be orientated at 0° or 90°

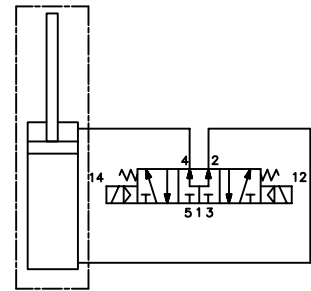
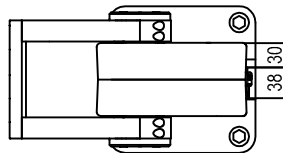
Supply voltage: 10÷30 V DC

IP code: IP 65

* : TOLERANCE BETWEEN DOWEL HOLES ± 0.02, TO SCREW HOLES ± 0.1



Pivot rotation in degrees	A
45°	564
60°	578
90°	609
120°	643



Size	Holding moment	Max. torque at the rotary table 0,55 MPa	Weight
300	6000 Nm	300 Nm	38 Kg

Min./Max. operating pressure: **0,4 / 0,6 MPa**
 Operating temperature: **5° ± 45° C**
 Predetermine pivot rotation in degrees: **45° - 60° - 90° - 120°**
 Electronic sensor with M12 swivel connector that can be orientated at 0° or 90°
 Supply voltage: 10÷30 V DC
 IP code: **IP 65**

* : TOLERANCE BETWEEN DOWEL HOLES ± 0.02, TO SCREW HOLES ± 0.1

Subject to technical modifications without notice.