

# LCO50

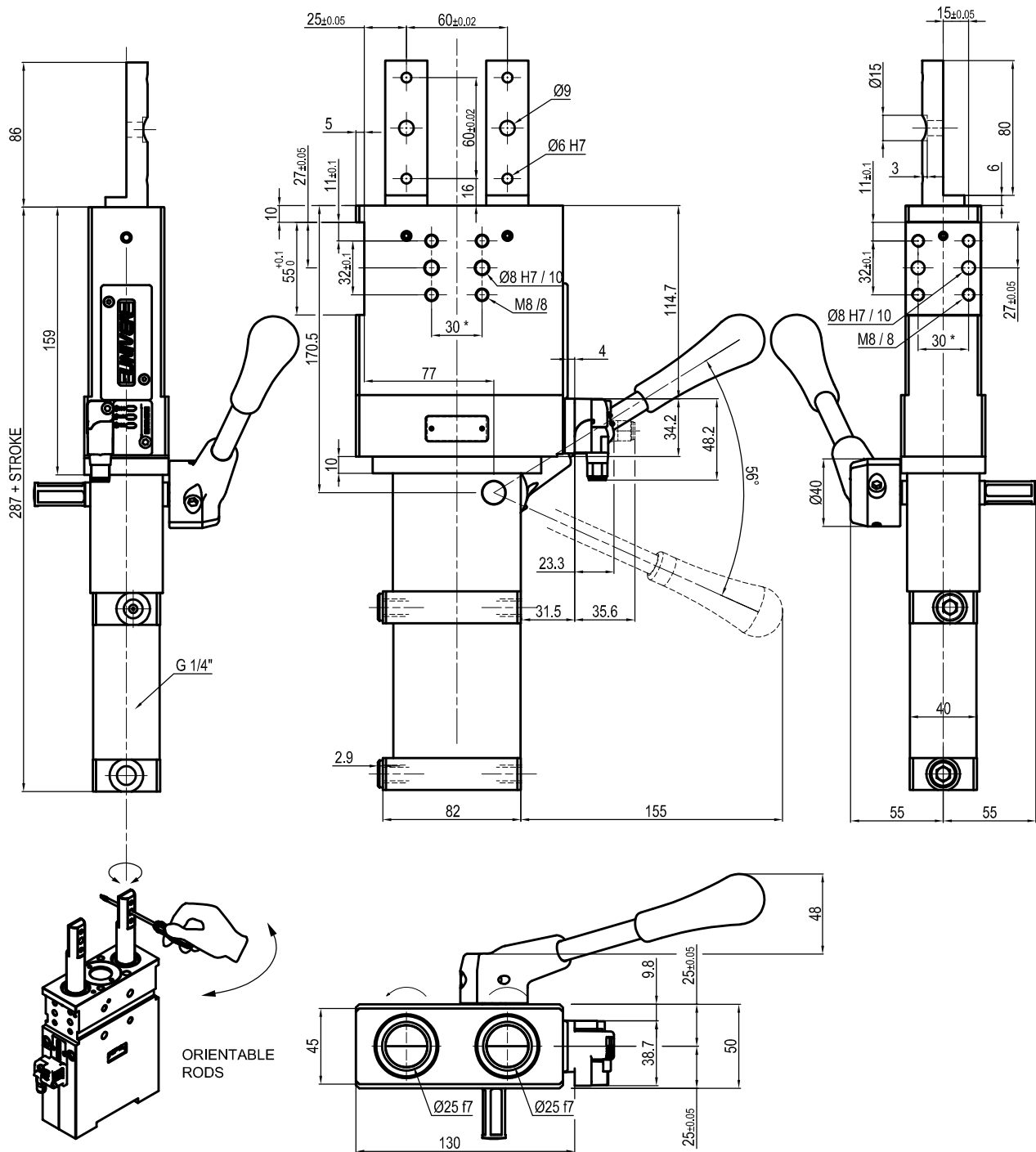
Pneumatic retractable locating pin units  
with hand lever,  
double orientable rod



L	C	O	5	0	0	5	0	A	A	R
1	2	3	4		5	6	7			

<b>1 Series</b> LC = Retractable locating pin unit	<b>2 Version</b> O = Pneumatic with hand lever, double orientable rod	<b>3 Size</b> 50 = Ø 50 mm
<b>4 Strokes</b> 015 = 15 mm 025 = 25 mm 040 = 40 mm 050 = 50 mm 060 = 60 mm	<b>5 Sensor</b> N = No sensor (with protection plate) A = Electronic sensor with M12 swivel connector DF-U	<b>6 Rod end style</b> A = Rod for off-set pins
<b>7 Option</b> R = Metallic rod scraper		

## UNIVERSAL Pneumatic retractable locating pin unit 2 rods, with manual lever



Bore Ø	Max. torque	Max. deflection moment	Weight
50 mm	20 Nm ±0.1°	20 Nm ±0.03°	6.2 Kg

Min./max. operating pressure: 0,4 / 0,6 MPa  
 Operating temperature: 5° + 45° C  
 Strokes in mm.: 15 - 25 - 40 - 50 - 60  
 With manual lever  
 Electronic sensor with M12 swivel connector that can be orientated at 0° or 90°  
 Supply voltage: 10÷30 Vdc  
 IP code: IP 65  
 Pneumatic ports on both sides

\* : TOLERANCE BETWEEN DOWEL HOLES ± 0.02, BETWEEN SCREW HOLES ± 0.1

Subject to technical modification without notice.

# LCO50

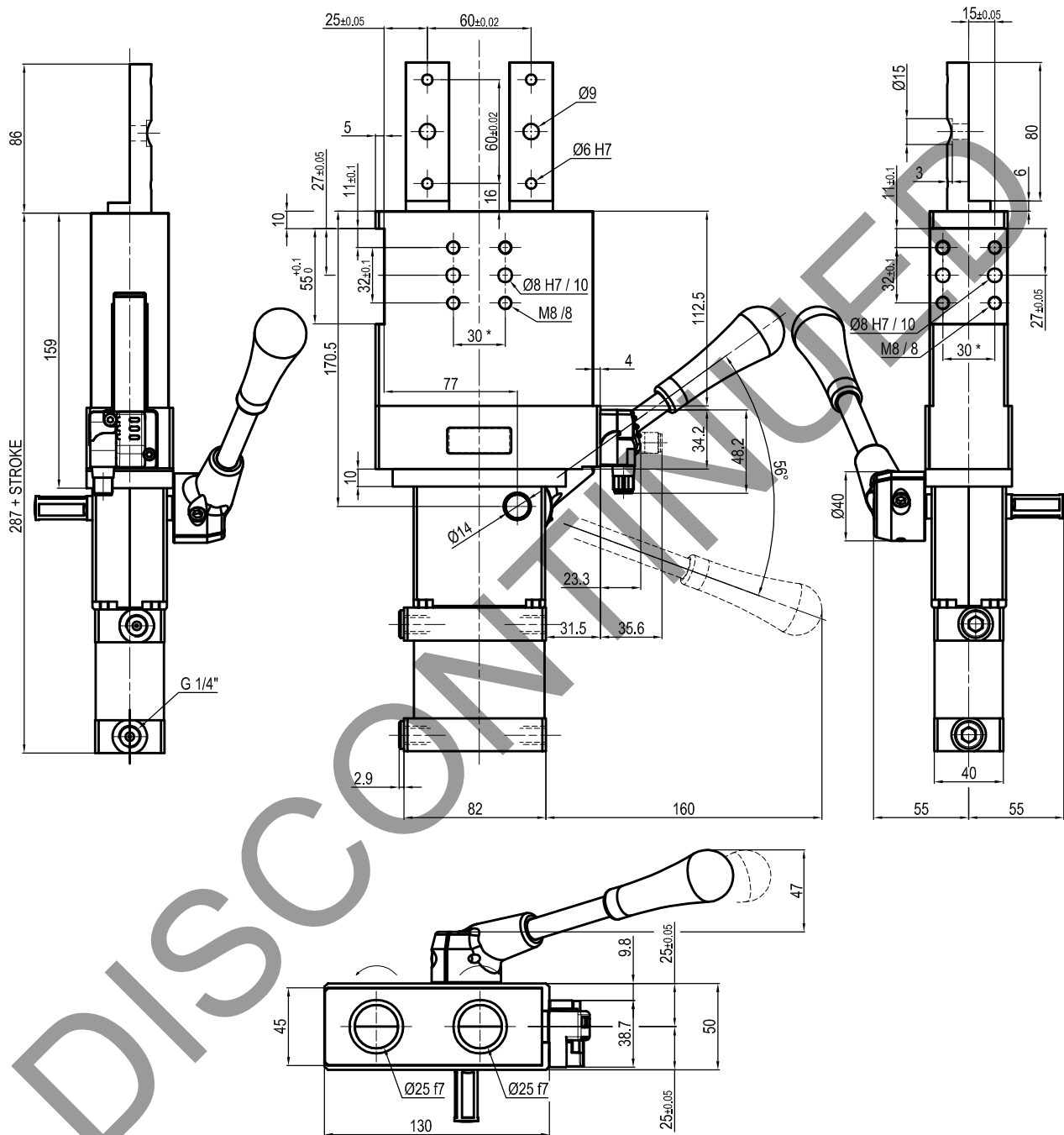
Pneumatic retractable locating pin units  
with manual lever,  
double rod



L	C	O	5	0	0	5	0	E	A	R
1	2	3	4		5	6	7			

<b>1 Series</b> LC = Retractable locating pin unit	<b>2 Version</b> O = Pneumatic with manual lever, double rod	<b>3 Size</b> 50 = Ø 50 mm
<b>4 Strokes</b> 015 = 15 mm 025 = 25 mm 040 = 40 mm 050 = 50 mm 060 = 60 mm	<b>5 Sensor</b> E = Electronic sensor with M12 swivel connector N = No sensor (with protection plate)	<b>6 Rod end style</b> A = Rod for off -set pins
<b>7 Rod scraper</b> R = Metallic rod scraper		

## UNIVERSAL Pneumatic retractable locating pin unit 2 rods, with manual lever



Bore Ø	Max. torque	Max. deflection moment	Weight
50 mm	20 Nm ±0.1°	20 Nm ±0.03°	6.2 Kg

Min./max. operating pressure: 0,4 / 0,6 MPa  
 Operating temperature: 5° + 45° C  
 Strokes in mm.: 15 - 25 - 40 - 50 - 60  
 With manual lever  
 Electronic sensor with M12 swivel connector that can be orientated at 0° or 90°  
 Supply voltage: 10±30 Vdc  
 IP code: IP 65  
 Pneumatic ports on both sides

\* : TOLERANCE BETWEEN DOWEL HOLES ± 0.02, TO SCREW HOLES ± 0.1

Subject to technical modification without notice.