

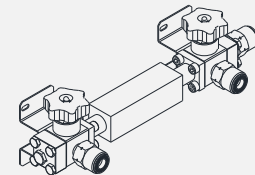
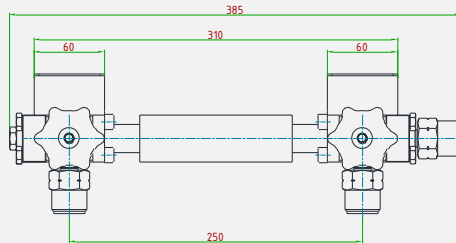
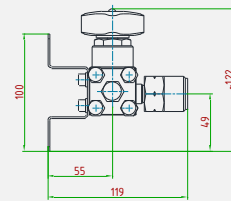
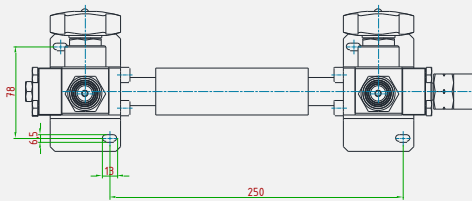


Rampe in alluminio con interni in acciaio inossidabile AISI 316L. Disponibile da 1 a 5 ingressi. Ogni ingresso è dotato di una valvola di intercettazione con dispositivo di non ritorno.

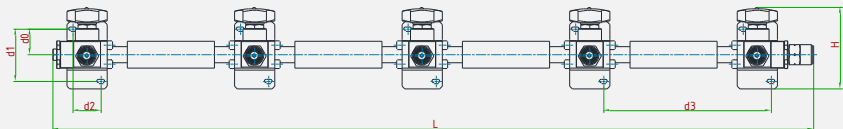
Disponibile in modalità **"rampa di carica"** con 1 ingresso e fino a 5 uscite.

Modular manifolds in aluminium with AISI 316L internals. Available with a maximum of 5 inlets. Each inlet has a shut-off valve equipped with a non-return system.

*Available the **"filling manifold"** version, which has 1 inlet and up to 5 outlets.*



N. of spaces	L	d0	d1	d2	d3	H
1 Unit	135	38	78	42	-	~ 122
2 Units	385	38	78	42	250	~ 122
3 Units	635	38	78	42	250	~ 122
4 Units	885	38	78	42	250	~ 122
5 Units	1135	38	78	42	250	~ 122



CARATTERISTICHE PRINCIPALI MAIN FEATURES

COMPATIBILITÀ COMPATIBILITY	Ammoniac Ammonia
PRESSIONE DI ESERCIZIO MASSIMA MAX. INLET PRESSURE	15 bar
ATTACCHI A PROCESSO IN/OUT CONNECTION	W30x1/14 SX – M
TEMPERATURA DI ESERCIZIO WORKING TEMPERATURE	-20°+60°C (-4+140 °F) standard altri range a richiesta / different temperature ranges on request
KV (CEI EN 60534-2) CV (CEI EN 60534-2)	0,5 m ³ /h 0,6 US gal/min
PESO WEIGHT	1,8 • 3,1 • 4,6 • 6,1 • 7,5 kg (1 • 2 • 3 • 4 • 5 posti) 3,9 • 6,8 • 10,1 • 13,4 • 16,5 lb (1 • 2 • 3 • 4 • 5 inlets)
CLASSE DI TENUTA OTTURATORE PLUG LEAKAGE CLASS	Grado "A" (UNI EN 12266-1) "A" class (UNI EN 12266-1)
CERTIFICAZIONI CERTIFICATIONS	PED 2014/68/UE
MATERIALE CORPO E PARTI INTERNE INTERNALS AND BODY MATERIAL	Alluminio, interni AISI 316L Aluminium, Internals in AISI 316L
MATERIALE GUARNIZIONI SEALS MATERIAL	EPDM
KIT RICAMBIO SPARE PARTS KIT	O-ring, otturatore assemblato, filtri O-rings, assembled plug, filters