

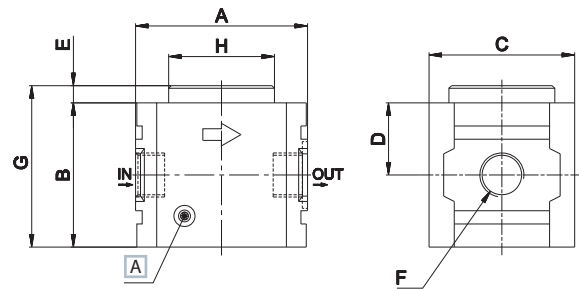
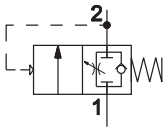
The gradual starter is used in pneumatic circuits where a cut-off in pressure, an abrupt start-up is to be avoided to prevent possible damages to equipment.

FUNCTIONING PRINCIPLE: 2 way valve which, in the stand-by position, allows the passage of an air regulated flow. When the working pressure is reached the valve allows the air full passage.

Size	1	
Part no.	HZE1Y10G	HZE1Y15G
Threaded port	G3/8	G1/2
Flow rate (NI/min) ^(A)	2200	
Max inlet pressure (bar-MPa-psi)	10-1-145	
Min pressure (bar)	3,5	
Fluid	compressed air	
Temperature (°C)	-20 ÷ 80	
Weight (Kg)	0,485	

(A) = inlet pressure 6 bar, outlet pressure 5 bar - Δp 1 bar

HZE-Y



[A] Regulating screw

Size	A	B	C	D	E	F	G	Ø H
1	65	55	55	27,5	6,5	G3/8-G1/2	61,5	40

