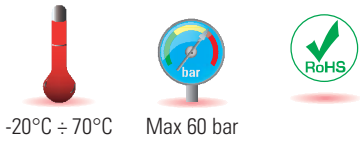
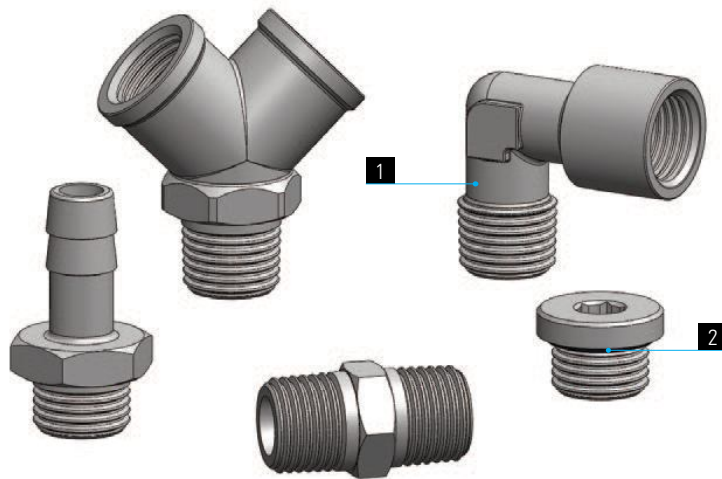


1	2
Corpo del raccordo Fitting Body Corps du raccord Verschraubungskörper	Guarnizioni Seals Joint d'étanchéité Dichtung
Ottone UNI EN 12164 CW614N - UNI EN 12165 CW617N Nichelato Brass UNI EN 12164 CW614N - UNI EN 12165 CW617N Nickel Plated Laiton UNI EN 12164 CW614N - UNI EN 12165 CW617N Nickelé Messing UNI EN 12164 CW614N - UNI EN 12165 CW617N vernickelt	NBR NBR NBR NBR



-20°C ÷ 70°C

Max 60 bar



	M5x0,8	G1/8	G1/4	G3/8	G1/2	G3/4	G1"	R1/8	R1/4	R3/8	R1/2	R3/4	R1"
	●	●	●	●	●	●	●	●	●	●	●	●	●

**Campi di applicazione:**  
 Impianti pneumatici, idraulici ed oleodinamici.

**Application fields:**  
 Pneumatic, hydraulic and oleodynamic circuits.

**Domaines d'application:**  
 Circuits pneumatiques, hydrauliques et oléodynamiques.

**Anwendungsbereiche:**  
 Hydraulische, öldynamische und pneumatische Anlagen.

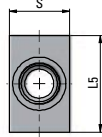
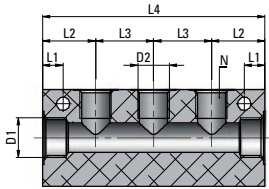
## RA 29 S

Ripartitore Singolo

Manifold, Single

Distributer, simple

Verteilblock, einfach



Tipo	D1	D2	N	L1	L2	L3	L4	L5	s	g	⚖
29 14 18 S3	G1/4	G1/8	3	4,5	18	18	72	30	20	86	
29 14 18 S4	G1/4	G1/8	4	4,5	18	18	90	30	20	110	
29 14 18 S5	G1/4	G1/8	5	4,5	18	18	108	30	20	130	
29 38 14 S3	G3/8	G1/4	3	8,5	22	24	92	40	25	184	
29 38 14 S4	G3/8	G1/4	4	8,5	22	24	116	40	25	238	
29 38 14 S5	G3/8	G1/4	5	8,5	22	24	140	40	25	298	

Corpo in Alluminio Non Ossidato - Alu body, not anodized - Corps Alu, non anodisé - Alukörper, nicht eloxiert

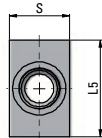
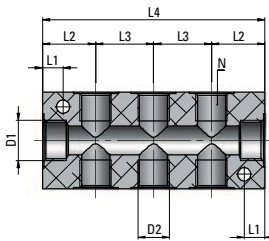
## RA 29 D

Ripartitore Doppio

Manifold, Double

Distributeur, double

Verteilblock, zweifach



Tipo	D1	D2	N	L1	L2	L3	L4	L5	s	g	⚖
29 14 18 D3	G1/4	G1/8	3+3	4,5	18	18	72	30	20	81	
29 14 18 D4	G1/4	G1/8	4+4	4,5	18	18	90	30	20	100	
29 14 18 D5	G1/4	G1/8	5+5	4,5	18	18	108	30	20	122	
29 38 14 D3	G3/8	G1/4	3+3	8,5	22	24	92	40	25	170	
29 38 14 D4	G3/8	G1/4	4+4	8,5	22	24	116	40	25	216	
29 38 14 D5	G3/8	G1/4	5+5	8,5	22	24	140	40	25	266	

Corpo in Alluminio Non Ossidato - Alu body, not anodized - Corps Alu, non anodisé - Alukörper, nicht eloxiert

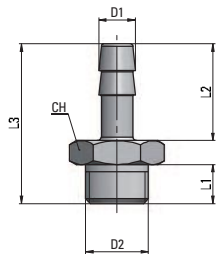
## RA 30

Portagomma

Hose Connector

Douille cannelée

Schlauchtülle



Tipo	D1	D2	L1	L2	L3	CH	g	⚖
30 03 M5	3	M5x0,8	5	9	17	8	2	
30 3,5 M5	3,5	M5x0,8	5	9	17	8	2	
30 4,5 M5	4,5	M5x0,8	5	9	17	8	2	
30 7,5 18	7,5	G1/8	6	20	30	14	10,5	
30 7,5 14	7,5	G1/4	8	20	33	17	17	
30 8,5 18	8,5	G1/8	6	20	30	14	11,5	
30 9,5 18	9,5	G1/8	6	20	30	14	11	
30 9,5 14	9,5	G1/4	8	20	33	17	18	
30 9,5 38	9,5	G3/8	9	20	34	19	22	
30 12,5 14	12,5	G1/4	8	22	33	17	21	
30 12,5 38	12,5	G3/8	9	22	34	19	24	
30 12,5 12	12,5	G1/2	10	22	38	24	38	
30 17,5 38	17,5	G3/8	9	24	38	19	38	
30 17,5 12	17,5	G1/2	10	24	39,5	24	43	

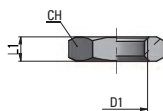
## RA 31

Dado

Nut

Ecrou

Überwurfmutter



Tipo	D1	L1	CH	g	⚖
31 00 18	G1/8	4,5	14	4	
31 00 14	G1/4	5	17	5	
31 00 38	G3/8	5,5	19	5	
31 00 12	G1/2	6	24	8	
31 00 M10x1	M10x1	4	14	3	
31 00 M12x1	M12x1	5	16	5	
31 00 M14x1	M14x1	5	18	5,5	
31 00 M16x1	M16x1	5	20	6	
31 00 M20x1,5	M20x1,5	4	27	10,5	