

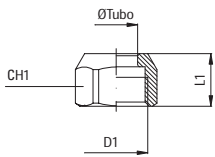
CX 10

Dado

Nut

Écrou

Überwurfmutter



Tipo	Ø Tubo	D1	L1	CH1	g $\Delta\Delta$
10 06 10	6-4	M10x1	10	12	4
10 08 12	8-6	M12x1	10	14	5
10 10 14	10-8	M14x1	11	16	7

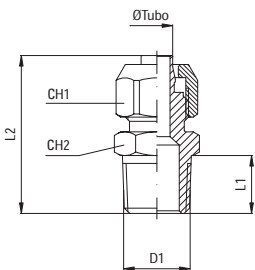
CX 11

Diritto maschio conico

Male Stud taper

Union Simple mâle conique

Gerade Einschraubverschraubung kegelig



Tipo	Ø Tubo	D1	L1	L2	CH1	CH2	g $\Delta\Delta$
11 06 18	6-4	R1/8	7,5	26	12	10	12
11 06 14	6-4	R1/4	11	29,5	12	14	17,5
11 08 18	8-6	R1/8	7,5	26,5	14	13	16,5
11 08 14	8-6	R1/4	11	30	14	14	20,5
11 10 14	10-8	R1/4	11	32,5	16	14	24
11 10 38	10-8	R3/8	11,5	33	16	17	30

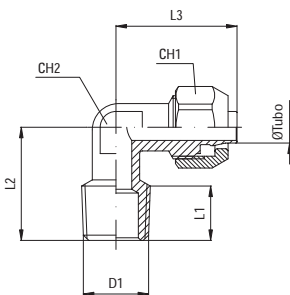
CX 14

Raccordo a L maschio conico

Taper Elbow, male

Raccord équerre mâle

Winkel-Einschraubverschraubung, kegelig



Tipo	Ø Tubo	D1	L1	L2	L3	CH1	CH2	g $\Delta\Delta$
14 06 18	6-4	R1/8	7,5	17	23	12	10	17
14 06 14	6-4	R1/4	11	21,5	23	12	10	21
14 08 18	8-6	R1/8	7,5	17	23	14	10	18
14 08 14	8-6	R1/4	11	21,5	23	14	10	23
14 10 14	10-8	R1/4	11	21,5	25,5	16	10	25

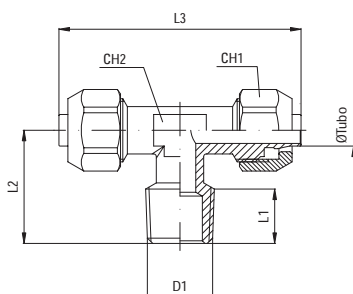
CX 20

T Centrale

Tee fitting

Raccord à Té central

T -Einschraubverschraubung



Tipo	Ø Tubo	D1	L1	L2	L3	CH1	CH2	g $\Delta\Delta$
20 06 18	6-4	R1/8	8	17	46	12	10	28
20 06 14	6-4	R1/4	11	21,5	46	12	10	31,5
20 08 18	8-6	R1/8	8	17	46	14	10	30
20 08 14	8-6	R1/4	11	21,5	46	14	10	34
20 10 14	10-8	R1/4	11	21,5	51	16	10	39,5