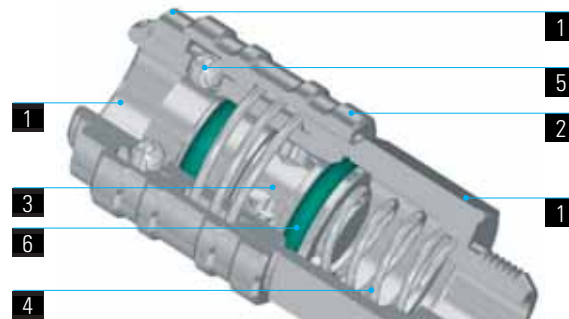


GX 10

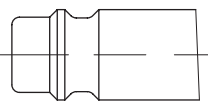
GIUNTO MULTIPRESA IN INOX

1	2	3	4	5	6	
Corpo Body Corps Körper	Ghiera di comando Command Sleeve Douille de commande Absperrhülse	Otturatore Valve Clapet Ventil	Molle Springs Ressorts Feder	Sfere Balls Billes Kugel	Guarnizioni Seals Joint d'étanchéité Dichtung	Innesti Plugs Embouts Stecker
Acciaio Inox AISI 316L (1.4404) Stainless Steel AISI 316L (1.4404) Acier Inox AISI 316L (1.4404) Edelstahl AISI 316L (1.4404)			Acciaio Inox AISI 302 Stainless Steel AISI 302 Acier Inox AISI 302 Edelstahl AISI 302	Acciaio Inox AISI 420 Stainless Steel AISI 420 Acier Inox AISI 420 Edelstahl AISI 420	FPM FPM FPM FPM	Acciaio Inox AISI 316L (1.4404) Stainless Steel AISI 316L (1.4404) Acier Inox AISI 316L (1.4404) Edelstahl AISI 316L (1.4404)



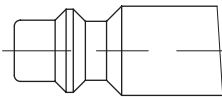
Intercambiabilità con i profili
Suitable with following plugs profiles
Interchangeable avec les suivants profils
Austauschbar mit folgenden Profilen

Portata a 6 bar
Flow rate at 6 bar
Débit à 6 bar
Durchfluß (6 bar)



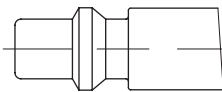
Profilo Tedesco
German Profile
Profil Allemand
Deutsches Profil

1600 NI/min



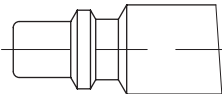
Profilo ISO 6150 B
ISO 6150 B Profile
Profil ISO 6150 B
ISO 6150 B Profil

1280 NI/min



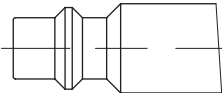
Profilo Svedese
Standard Swedisch Profile
Profil Standard Suédois
Standard schwedisches Profil

1280 NI/min



Profilo Italiano
Standard Italian Profile
Profil Standard Italien
Standard Italienisches Profil

1080 NI/min



Profilo MIL C4109
MIL C4109 Profile
Profil MIL C4109
MIL C4109 Profil

1310 NI/min



Profilo ARO 210
ARO 210 Profile
Profil ARO 210
ARO 210 Profil

1160 NI/min

Scala 1:1 - Scale 1:1 - Echelle 1:1 - Maßstab 1:1

**GIUNTO MULTIPRESA
IN INOX**

**STAINLESS STEEL MULTI PROFILE
QUICK COUPLER**

**COUPLEUR MULTIPROFIL
EN ACIER INOX**

**MULTIPROFILKUPPLUNG
AUS EDELSTAHL**

Pressione di lavoro: 0 ÷ 15 bar
Temperatura di lavoro: -20°C ÷ 150°C

Working pressure: 0 ÷ 15 bar
Working temperature: -20°C ÷ 150°C

Pression de travail: 0 ÷ 15 bar
Température de travail: -20°C ÷ 150°C

Arbeitsdruck: 0 ÷ 15 bar
Arbeitstemperatur: -20°C ÷ 150°C

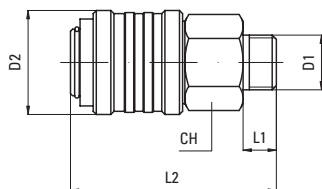
GX 10

Giunto con filetto maschio

Male coupler

Coupleur mâle

Einschraubkupplung



Tipo	D ₁	D ₂	L ₁	L ₂	CH	g
11 00 14	G1/4	23,5	10	52	21	
11 00 38	G3/8	23,5	11	52	21	

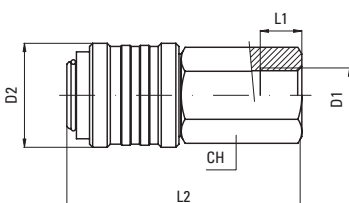
GX 10

Giunto con filetto femmina

Female coupler

Coupleur femelle

Aufschraubkupplung



Tipo	D ₁	D ₂	L ₁	L ₂	CH	g
12 00 14	G1/4	23,5	10	57	21	
12 00 38	G3/8	23,5	11	58	21	

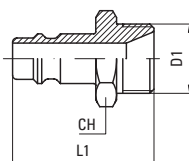
GX 10

Innesto con filetto maschio,
profilo tedesco

Male plug according
to German profile

Embout mâle selon profil allemand

Stecker gemäss deutschem Profil,
Einschraub



Tipo	D ₁	L ₁	CH	g
20 00 14	G1/4	33	17	
20 00 38	G3/8	34	21	

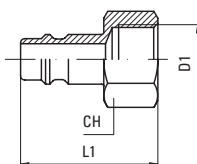
GX 10

Innesto con filetto femmina,
profilo tedesco

Female plug according
to German profile

Embout femelle selon
profil allemand

Stecker gemäss deutschem Profil,
Aufschraub



Tipo	D ₁	L ₁	CH	g
21 00 14	G1/4	33	17	
21 00 38	G3/8	33	21	