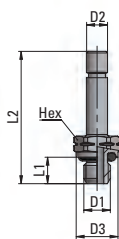
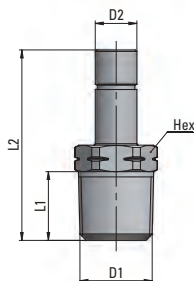


PN 38

Stem adaptor



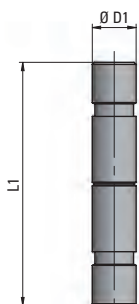
Part Number	D1 UNF	D2	D3	L1	L2	HEX	oz
38 5/32 10-32	10-32	5/32	.311	.197	.984	5/16	.088



Part Number	D1 NPTF	D2	L1	L2	HEX	oz
38 5/32 1/8	1/8	5/32	.335	1.142	7/16	.247
38 5/32 1/4	1/4	5/32	.512	1.339	9/16	.494
38 1/4 1/8	1/8	1/4	.335	1.220	7/16	.300
38 1/4 1/4	1/4	1/4	.512	1.417	9/16	.529
38 5/16 1/8	1/8	5/16	.335	1.220	7/16	.318
38 5/16 1/4	1/4	5/16	.512	1.417	9/16	.547
38 3/8 1/4	1/4	3/8	.512	1.496	9/16	.582
38 3/8 3/8	3/8	3/8	.512	1.516	11/16	.812
38 1/2 3/8	3/8	1/2	.512	1.634	11/16	.900
38 1/2 1/2	1/2	1/2	.669	1.831	7/8	1.517

PN 39

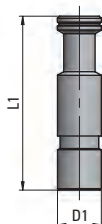
Extention Piece



Part Number	D1	L1	oz
39 5/32 5/32	5/32	1.181	.099
39 1/4 1/4	1/4	1.378	.176
39 5/16 5/16	5/16	1.378	.194
39 3/8 3/8	3/8	1.575	.300
39 1/2 1/2	1/2	1.732	.494

PN 40

Plug



Part Number	D1	L1	oz
40 1/8 1/8	1/8	.787	.046
40 5/32 5/32	5/32	.984	.088
40 1/4 1/4	1/4	.984	.159
40 5/16 5/16	5/16	1.181	.441
40 3/8 3/8	3/8	1.378	.723
40 1/2 1/2	1/2	1.575	1.482