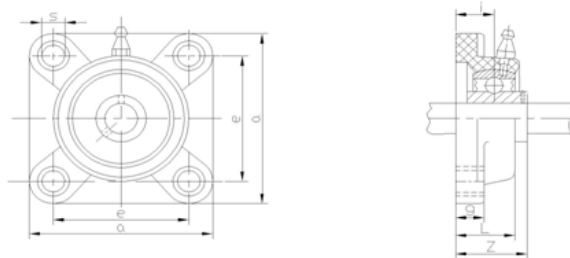


## General Specifications

Used on end bearings of moving shafts and drums.  
Bearings produced for various shaft diameters are available.



Stock Code	Stock Name	Type	Z	A	E	L	G	I	S	De
4.007.04.201.02	Cast Ball Bearing Ø12	UCF 201	33,3	86	64	25,5	11	15	12	M10
4.007.04.202.02	Cast Ball Bearing Ø15	UCF 202	33,3	86	64	25,5	11	15	12	M10
4.007.04.203.02	Cast Ball Bearing Ø17	UCF 203	33,3	86	64	25,5	11	15	12	M10
4.007.04.204.02	Cast Ball Bearing Ø20	UCF 204	33,3	86	64	25,5	11	15	12	M10
4.007.04.205.02	Cast Ball Bearing Ø25	UCF 205	35,7	95	70	27	13	16	12	M10
4.007.04.206.02	Cast Ball Bearing Ø30	UCF 206	40,2	108	83	31	13	18	12	M10
4.007.04.207.02	Cast Ball Bearing Ø35	UCF 207	44,4	117	92	34	15	19	14	M12
4.007.04.208.02	Cast Ball Bearing Ø40	UCF 208	51,2	130	102	36	15	21	16	M14

