

Paint & Varnish Processing

External Pneumatic Vibrators S-Type



37



Description ▼

"S" External Pneumatic Ball Vibrators develop frequencies of up to 35,000 r.p.m. and they are used wherever powdery materials have to be moved. "S" External Ball Vibrators are installed on bins to prevent bridging or ratholing and for the improvement of material flow on chutes, screens and vibrating tables.

Function ▼

"S" External Ball Vibrators consist of an anodized aluminium body inside which a steel ball rotates on a specially hardened and ground steel ring. For operation a 2/2-way-valve and filtered compressed air are required.



Application ▼

"S" External Ball Vibrators are used in all types of powder or granular material processing plants where flow aids are required. Typical applications are compounding or masterbatch lines.

They are fitted on FIBC (Bulk Bag) dischargers or storage, weigh or feeding hoppers.

Benefits ▼

- ✓ High centrifugal force and low amplitude;
- ✓ ATEX Zone 22-compliant – Ex II 3D T100°;
- ✓ Suitable for powdery or granular materials;
- ✓ No damage to bin structure;
- ✓ Low air consumption;
- ✓ Durable;
- ✓ Easy to install;
- ✓ Maintenance-free when used with filtered/lubricated air.



Paint & Varnish Processing

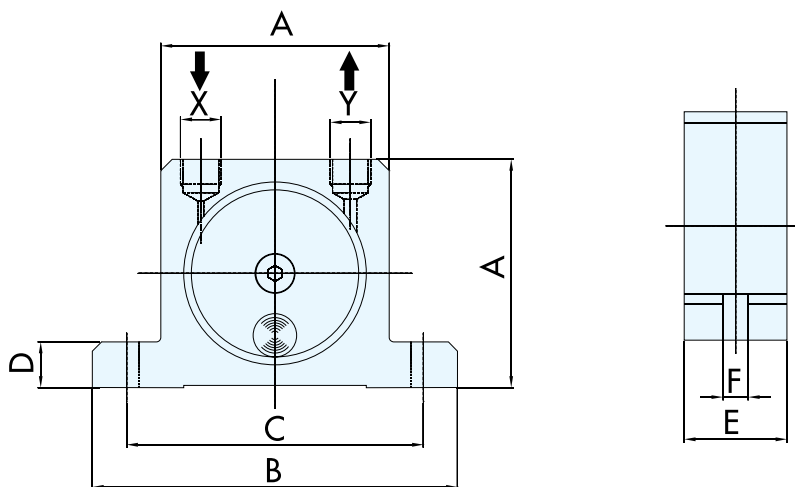
External Pneumatic Vibrators S-Type



Technical Features / Performance ▼

- ▶ Galvanised steel cover
- ▶ Brass silencer
- ▶ Nickel-plated brass air nipple inlet
- ▶ Operating temperature: -20° C to 180° C (-4° F to 356° F)
- ▶ Operating pressure: 3 to 6 bar (44 to 88 PSI)

Overall Dimensions ▼



TYPE	A		B		C		D		E		F		X-Y	kg	lb
	mm	in	mm	in	mm	in	mm	in	mm	in	mm	in			
S8	50	1.97	86	3.39	68	2.68	12	0.47	20	0.79	7	0.28	1/8"	0.13	0.29
S 10									25	0.98					
S 13	65	2.56	113	4.45	90	3.54	16	0.63	28	1.10	9	0.35	1/4"	0.26	0.57
S 16									38	1.50				0.30	0.66
S 20	80	3.15	128	5.04	104	4.09	16	0.63	33	1.30	9	0.35	1/4"	0.53	1.17
S 25									45	1.77				0.63	1.39
S 30	100	3.94	160	6.30	130	5.12	20	0.79	50	1.97	11	0.43	3/8"	1.13	2.49
S 36									260	9.2				475	16.8

TYPE	Vibrations			F.C. max.						Air Consumption					
	2 bar=29 psi	4 bar=58 psi	6 bar=87 psi	2 bar=29 psi		4 bar=58 psi		6 bar=87 psi		2 bar=29 psi		4 bar=58 psi		6 bar=87 psi	
	Vpm			kg	lb	kg	lb	kg	lb	l/min	CF/min	l/min	CF/min	l/min	CF/min
S8	25,500	31,000	35,000	13	29	26	57	36	79	83	2.9	145	5.1	195	6.9
S 10	22,500	28,000	34,000	25	55	47	103	71	156	92	3.2	150	5.3	200	7.1
S 13	15,000	18,500	22,500	32	70	55	121	87	191	94	3.3	158	5.6	225	7.9
S 16	13,000	17,000	19,500	45	99	80	176	110	242	122	4.3	200	7.1	280	9.9
S 20	10,500	14,500	16,500	72	158	122	268	172	378	130	4.6	230	8.1	340	12.0
S 25	9,200	12,200	14,000	93	205	157	345	205	451	160	5.7	290	10.2	425	15.0
S 30	7,800	9,700	12,500	151	332	247	543	321	706	215	7.6	375	13.2	570	20.1
S 36	7,300	9,000	10,000	206	453	315	693	405	891	260	9.2	475	16.8	675	23.8

D.S. EN-September 2015.800 Rights reserved to modify technical specifications.

This datasheet might not show the complete range but only the models specialised for the application.



www.wamgroup.com