

# HZE3

## Air Treatment Units

New size 3 - G1"

Standard configurations:

- Filter
- Regulator
- Lubricator
- Filter regulator (FR)
- Filter regulator + Lubricator (FR+L)
- Filter + Regulator + Lubricator (F+R+L)



### TECHNICAL CHARACTERISTICS

Ambient temperature	-5 ÷ 60 °C
Fluid	filtered compressed air, with or without lubrication
Working pressure	10 bar (pressure regulator 15 bar)
Max pressure	15 bar (pressure regulator 20 bar)

### CONSTRUCTIVE CHARACTERISTICS

Body	die-cast aluminium (painted)
Knob	tecnopolymer
Ring nut	zinc-plated steel
Bowl	polycarbonate
Bowl guard	tecnopolymer
Filter element	polyethylene
Seals	nitrile rubber (NBR)
Springs	steel
Diaphragm	fabric reinforced rubber

### CODIFICATION KEY

H	Z	E	3	B	2	5	G	S
1	2	3	4	5				

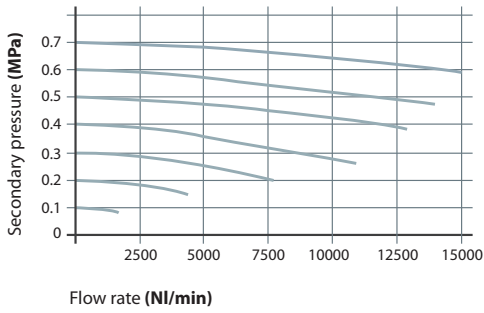
1 Series	2 Size	3 Model
<b>HZE</b> Air treatment unit with manual drain and standard semi-automatic drain	<b>3</b> = (G1")	<b>F</b> = Filter <b>R</b> = Regulator <b>L</b> = Lubricator <b>B</b> = Filter regulator (FR) <b>D</b> = Filter regulator + Lubricator (FR+L) <b>C</b> = Filter + Regulator + Lubricator (F+R+L)

4 Thread	5 Option
<b>25G</b> = G1"	<b>A</b> = Automatic drain <b>S</b> = Manual drain/semi-automatic drain (standard supplied) Excluding regulator (R) and lubricator (L)

Flow characteristics

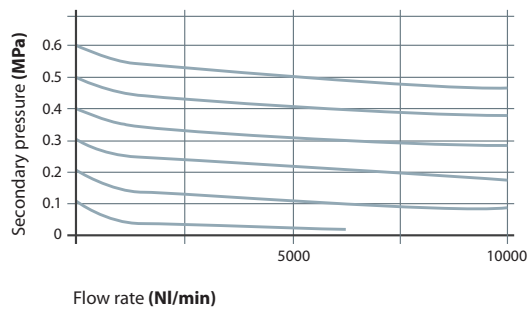
Filter

■ HZE3F25GS



Regulator

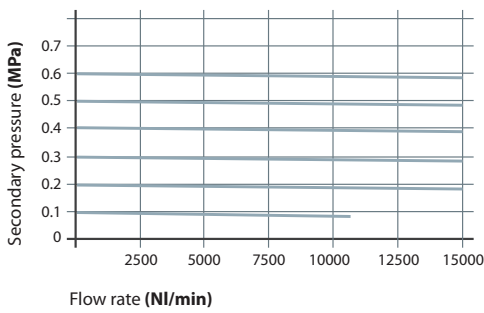
■ HZE3R25G



>> Supply pressure  
**7 bar**

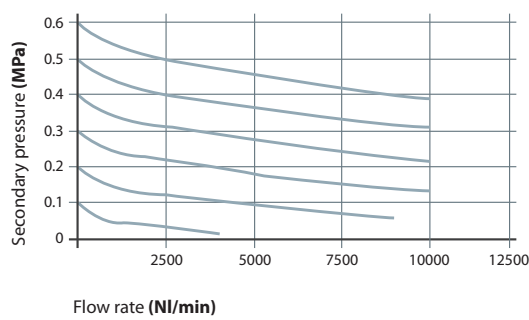
Lubricator

■ HZE3L25G



Filter regulator

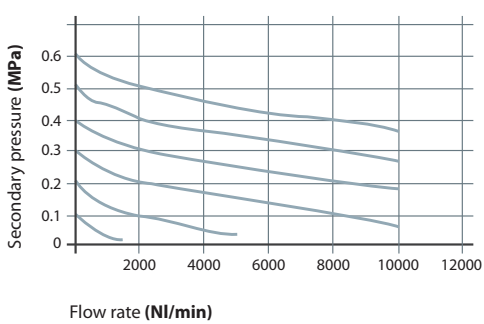
■ HZE3B25GS



4

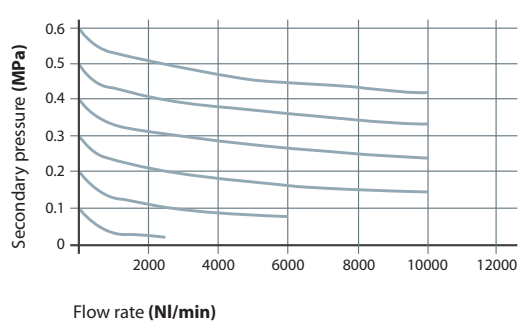
Filter regulator + Lubricator

■ HZE3D25GS

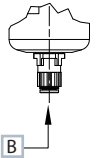
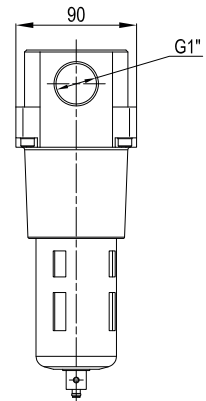
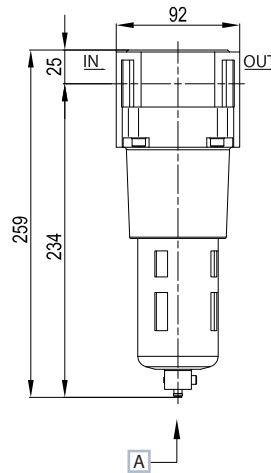


Filter + Regulator + Lubricator

■ HZE3C25GS



F - Filter

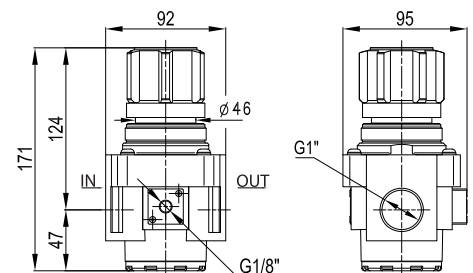


- A Manual/semi-automatic drain ID Tube 6 mm
- B Automatic drain OD Tube 8 mm

Part no.	HZE3F25GS
Connections	G1"
Filtration rate (µm)	40
Flow rate (NI/min) <sup>(A)</sup>	10000
Max inlet pressure (bar-MPa-psi)	10-1-145
Working pressure (bar) with manual/semi-automatic drain	0,5-10
Working pressure (bar) with automatic drain	1,5-10
Fluid	compressed air
Temperature (°C)	-5 ÷ 60
Condensation drain capacity (cm <sup>3</sup> )	75
Condensation drain <sup>(B)</sup>	manual/semi-automatic
Weight (g)	1180
Mounting position	vertical

(A) = inlet pressure 7 bar - Δp 0,5 bar  
 (B) = manual drain with semi-automatic function at < 0,5 bar pressure

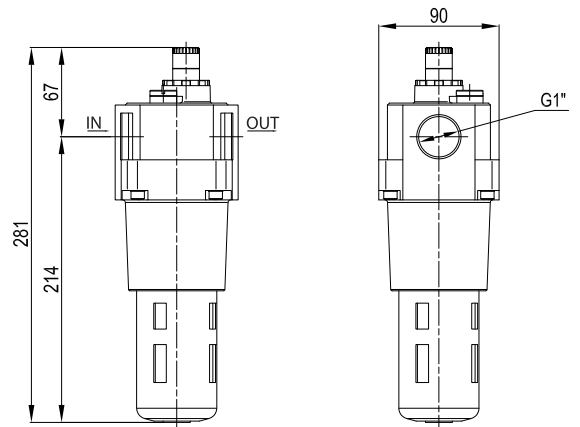
R - Regulator



Part no.	HZE3R25G
Connections	G1"
Flow rate (NI/min) <sup>(A)</sup>	10000
Max inlet pressure (bar-MPa-psi)	15 - 1,5 - 217
Pressure adjustment - relieving version (bar)	0,5 ÷ 8,5
Pressure gauge adaptor	G1/8
Fluid	filtered air
Temperature (°C)	-5 ÷ 60
Weight (g)	1460
Mounting position	any

(A) = inlet pressure 7 bar, outlet pressure 5 bar - Δp 1 bar  
 HZE3Z310R L bracket, standard supplied  
 Ring nut for panel not included

L - Lubricator

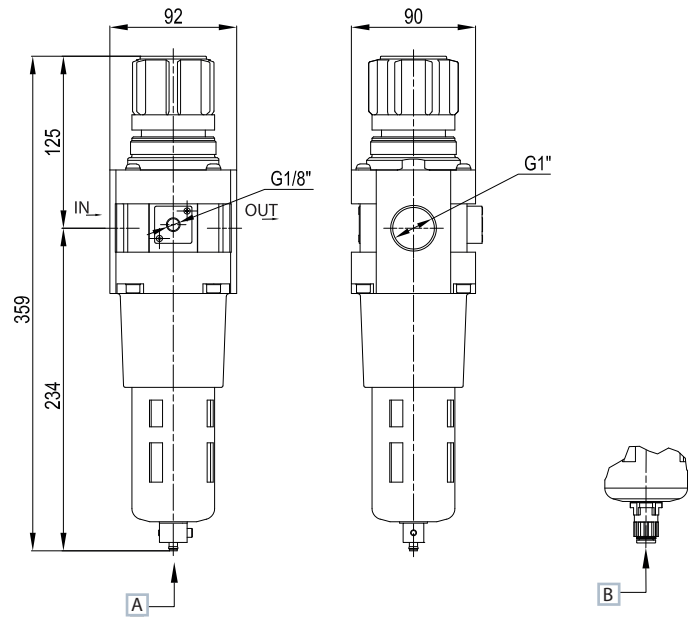
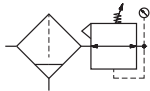


<b>Part no.</b>	HZE3L25G
<b>Connections</b>	G1"
<b>Flow rate (NI/min)<sup>(A)</sup></b>	10000
<b>Max inlet pressure (bar-MPa-psi)</b>	10-1-145
<b>Working pressure (bar)</b>	0,5-10
<b>Fluid</b>	filtered air
<b>Temperature (°C)</b>	-5 ÷ 60
<b>Bowl capacity (cm<sup>3</sup>)</b>	200
<b>Weight (g)</b>	1260
<b>Mounting position</b>	vertical
<b>Recommended oil</b>	ISO VG 32
<b>Min. working flow rate (NI/min)</b>	33

(A) = inlet pressure 7 bar - Δp 0,2 bar

4

B - Filter regulator



- A Manual/semi-automatic drain ID Tube 6 mm
- B Automatic drain OD Tube 8 mm

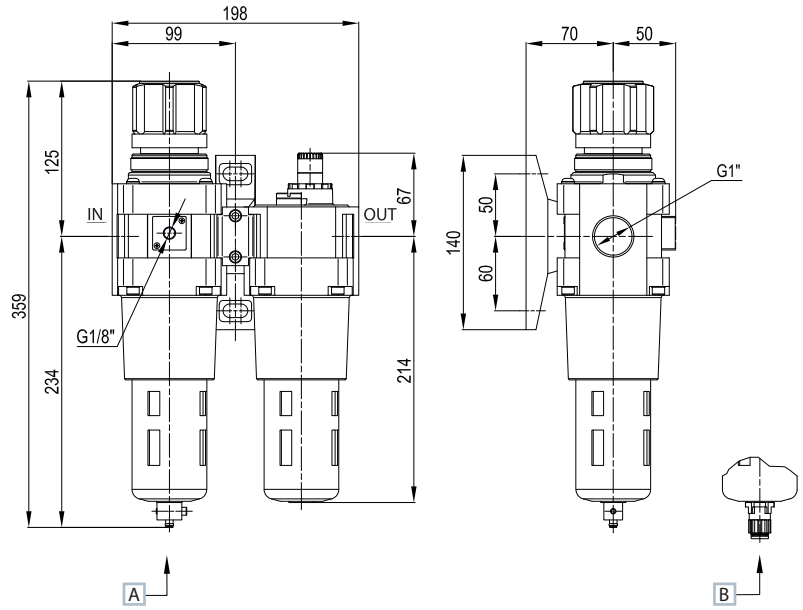
Part no.	HZE3B25GS
Connections	G1"
Filtration rate (µm)	40
Flow rate (NI/min) <sup>(A)</sup>	10000
Max inlet pressure (bar-MPa-psi)	10-1-145
Working pressure (bar) with manual/semi-automatic drain	0,5-10
Working pressure (bar) with automatic drain	1,5-10
Pressure adjustment - relieving version (bar)	0,5 ÷ 8,5
Pressure gauge adaptor	G1/8
Fluid	compressed air
Temperature (°C)	-5 ÷ 60
Condensation drain capacity (cm <sup>3</sup> )	75
Drain capacity <sup>(B)</sup>	manual/semi-automatic
Weight (g)	1940
Mounting position	vertical

(A) = inlet pressure 7 bar, outlet pressure 5 bar - Δp 2 bar  
 (B) = manual drain with semi-automatic function at < 0,5 bar pressure

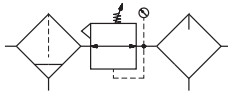
HZE3Z310R L bracket, standard supplied

Ring nut for panel not included

D - Filter regulator + Lubricator



- A Manual/semi-automatic drain ID Tube 5,5 mm
- B Automatic drain OD Tube 8 mm

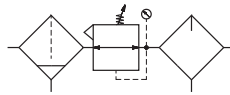
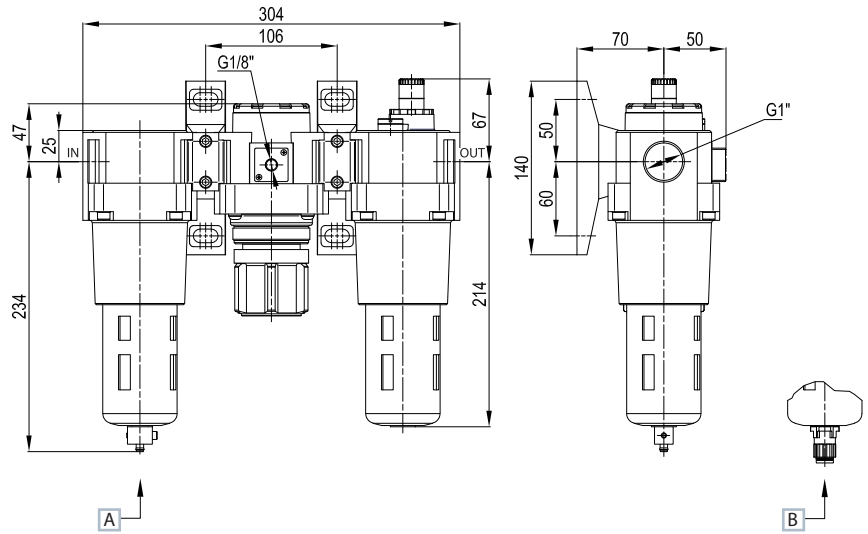


4

Part no.	HZE3D25GS
Connections	G1"
Filtration rate (µm)	40
Flow rate (NI/min) <sup>(A)</sup>	10000
Max inlet pressure (bar-MPa-psi)	10-1-145
Working pressure (bar) with manual/semi-automatic drain	0,5-10
Working pressure (bar) with automatic drain	1,5-10
Pressure adjustment - relieving version (bar)	0,5 ÷ 8,5
Pressure gauge adaptor	G1/8
Fluid	compressed air
Temperature (°C)	-5 ÷ 60
Condensation drain capacity (cm <sup>3</sup> )	75
Bowl capacity (cm <sup>3</sup> )	200
Drain capacity <sup>(B)</sup>	manual/semi-automatic
Weight (g)	3480
Mounting position	vertical
Recommended oil	ISO VG 32
Min. working flow rate (NI/min)	33

(A) = inlet pressure 7 bar, outlet pressure 5 bar - Δp 2 bar  
 (B) = manual drain with semi-automatic function at < 0,5 bar pressure

C - Filter + Regulator + Lubricator



- A Manual/semi-automatic drain ID Tube 5,5 mm
- B Automatic drain OD Tube 8 mm

Part no.	HZE3C25GS
Connections	G1"
Filtration rate (µm)	40
Flow rate (NI/min) <sup>(A)</sup>	10000
Max inlet pressure (bar-MPa-psi)	10-1-145
Pressure adjustment - relieving version (bar)	0,5 ÷ 8,5
Working pressure (bar) with manual/semi-automatic drain	0,5-10
Working pressure (bar) with automatic drain	1,5-10
Pressure gauge adaptor	G1/8
Fluid	compressed air
Temperature (°C)	-5 ÷ 60
Condensation drain capacity (cm <sup>3</sup> )	75
Bowl capacity (cm <sup>3</sup> )	200
Drain capacity <sup>(B)</sup>	manual/semi-automatic
Weight (g)	4200
Mounting position	vertical
Recommended oil	ISO VG 32
Min. working flow rate (NI/min)	33

(A) = inlet pressure 7 bar, outlet pressure 5 bar - Δp 1 bar  
 (B) = manual drain with semi-automatic function at < 0,5 bar pressure

Other available versions

HZE3R25GS...

HZE3B25GS...



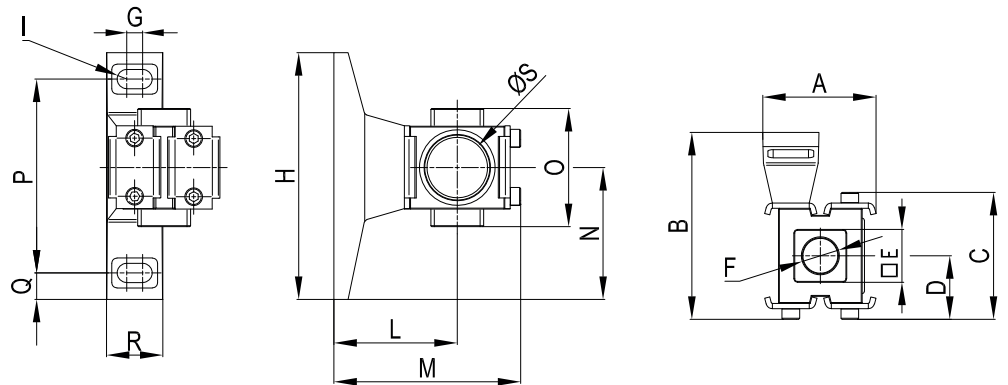
Regulator with integrated digital pressure switch size 3 (ring nut for panel not included)  
**HZE3R25GQ**  
**HZE3R25GT** with M8 connector

Filter regulator with integrated digital pressure switch size 3 (ring nut for panel not included)  
**HZE3B25GQ**  
**HZE3B25GST** with M8 connector

Accessories

Intermediate diverter block

4

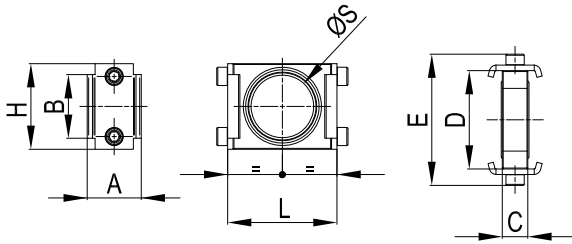


size	A	B	C	D	E	F	G	H	I	L	M	N	O	P	Q	R	ØS	Part no.
3	64	106	72	36	30	G1/2	9	140	5,5	70	106	75	67	110	15	32	34,4	HZE3N15G



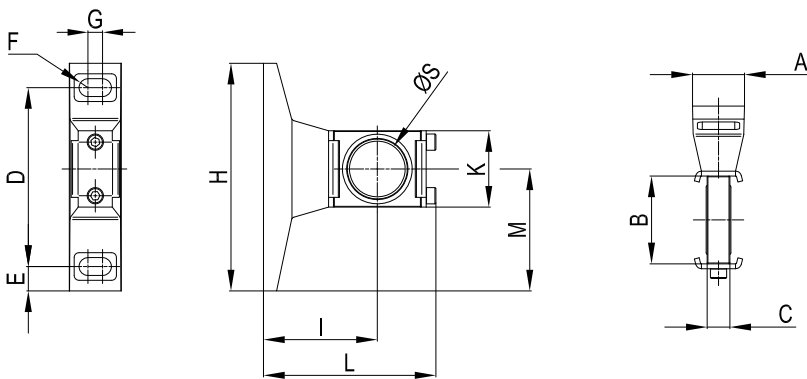
## Fixing elements

### Assembly kit



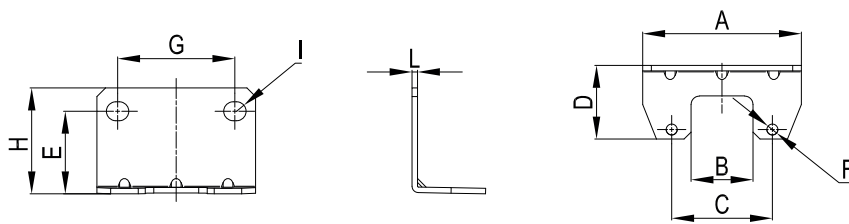
size	A	B	C	D	E	H	L	ØS	Part no.
3	30	35	14	54	72	47	60	34,4	HZE3Z200

### T-bracket assembly kit



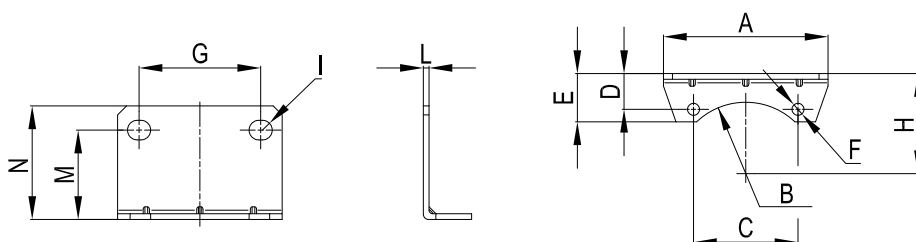
size	A	B	C	D	E	F	G	H	I	K	L	M	ØS	Part no.
3	32	54	14	110	15	5,5	9	140	70	47	106	75	34,4	HZE3Z210

### L-bracket (for regulator and filter regulator)



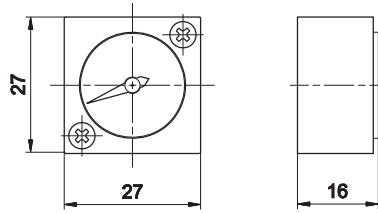
size	A	B	C	D	E	ØF	G	H	I	L	Part no.	*Standard supplied with regulator and filter regulator
3	92	36	58,5	43	48	6,5	68	61	5,5	3,2	HZE3Z310R	

### L-bracket (for filter and lubricator)



size	A	B	C	D	E	ØF	G	H	I	L	M	N	Part no.
3	92	40	58,4	20	27	6,8	68	56	5,5	3,2	50	63,5	HZE3Z310F

HZ9464G

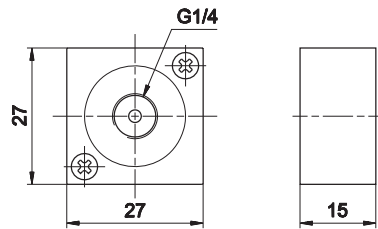


Integrated square pressure gauge (0 -12 bar)  
Screw tightening torque: Max 0,6 Nm  
(supplied without screws)

HZE7Z490



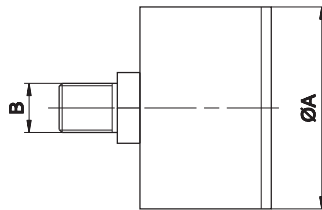
G1/4



Threaded adaptor for round pressure gauge  
Screw tightening torque: Max 0,6 Nm  
(supplied without screws)

HZ9P...

4



Part no.	Ø A	Scale		Thread - B
		bar	MPa	
HZ9P400318	40	0 - 2,5	0 - 0,25	R1/8C
HZ9P400618	40	0 - 6	0 - 0,6	R1/8C
HZ9P401018	40	0 - 10	0 - 1	R1/8C
HZ9P500314	50	0 - 2,5	0 - 0,25	R1/4C
HZ9P500614	50	0 - 6	0 - 0,6	R1/4C
HZ9P501014	50	0 - 10	0 - 1	R1/4C
HZ9P630314	63	0 - 2,5	0 - 0,25	R1/4C
HZ9P630614	63	0 - 6	0 - 0,6	R1/4C
HZ9P631014	63	0 - 10	0 - 1	R1/4C

Body: technopolymer  
Dial: acrylic, pressure mounted  
Accuracy: EN 837 class 1,6 - 2,5. ASME B40.1 grade B  
Protection: IP 43

Filter regulator accessories

HZE3Z600SS

HZE3Z401

HZE3Z660



Bowl with semi-automatic drain size 3  
HZE3Z600SS

Bowl with automatic drain size 3  
HZE3Z600SA

Filter element 40 µm size 3  
HZE3Z664

Regulator and filter regulator accessories

HZE3Z602

HZE3Z658

HZE3Z603

HZE3Z610



Knob size 3  
HZE3Z602

Regulator spring size 3  
HZE3Z658  
Pressure adjustment  
0,5 ÷ 8,5

Ring nut for panel size 3  
HZE3Z603  
(available upon request)

Diaphragm kit size 3  
HZE3Z610 with relieving

Lubricator accessories

HZE3Z601

HZE3Z470



Standard bowl size 3  
HZE3Z601

Lubricator transparent dome size 3  
HZE3Z470