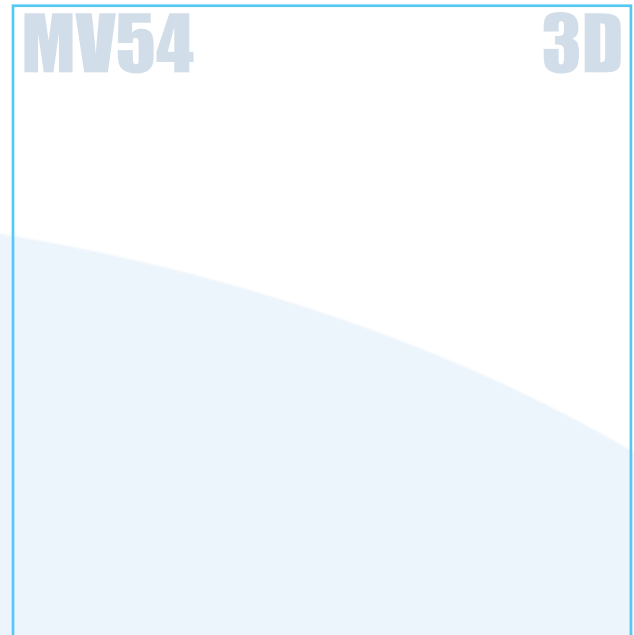
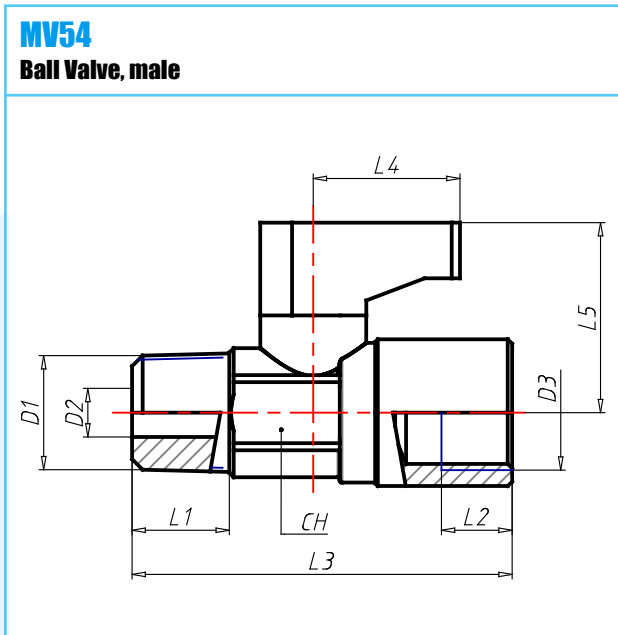


Material: Brass Chrome Plated
Working Temperature: -20 ÷ 90 C°
Working Temperature: F°
Working Pressure (max): 0 ÷ 10 bar
Working Pressure (max): psi
Vacuum: kPa
Vacuum: Hg
Conformity:

Conformity:
Conformity:
Conformity:
Conformity:
Application Pneumatic installations fed with filtered, lubricated air



CODE	TIPO	D1	D2	D3	L1	L2	L3	L4	L5	CH	G	CONF
4440001	MV54 00 18	R1/8	5.5	G1/8	8.0	8.0	35.5	19	21.5	14	34.4	RoHS
4440002	MV54 00 14	R1/4	5.5	G1/4	11.0	11.0	40.5	19	21.5	14	42.7	RoHS
4440003	MV54 00 38	R3/8	8.0	G3/8	11.5	10.5	43.0	24	24.0	17	53.0	RoHS
4440004	MV54 00 12	R1/2	10.0	G1/2	15.0	12.0	50.0	34	27.0	21	89.5	RoHS