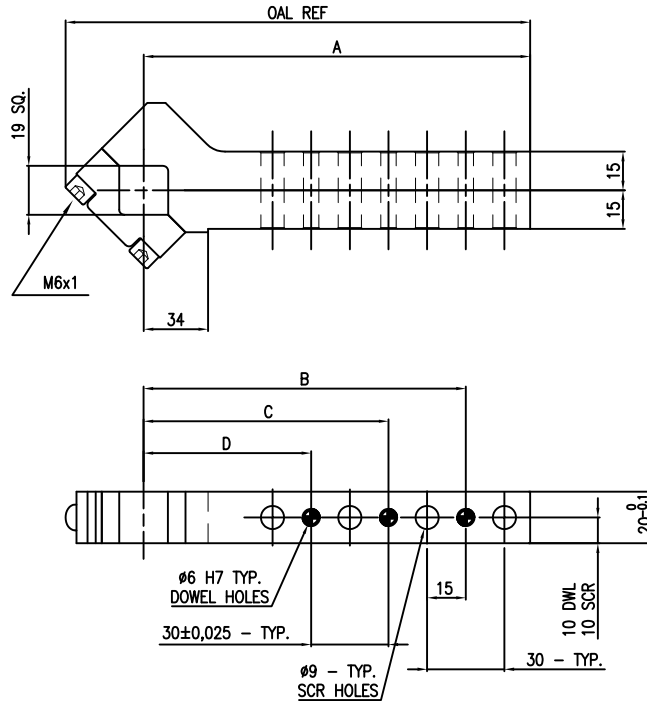
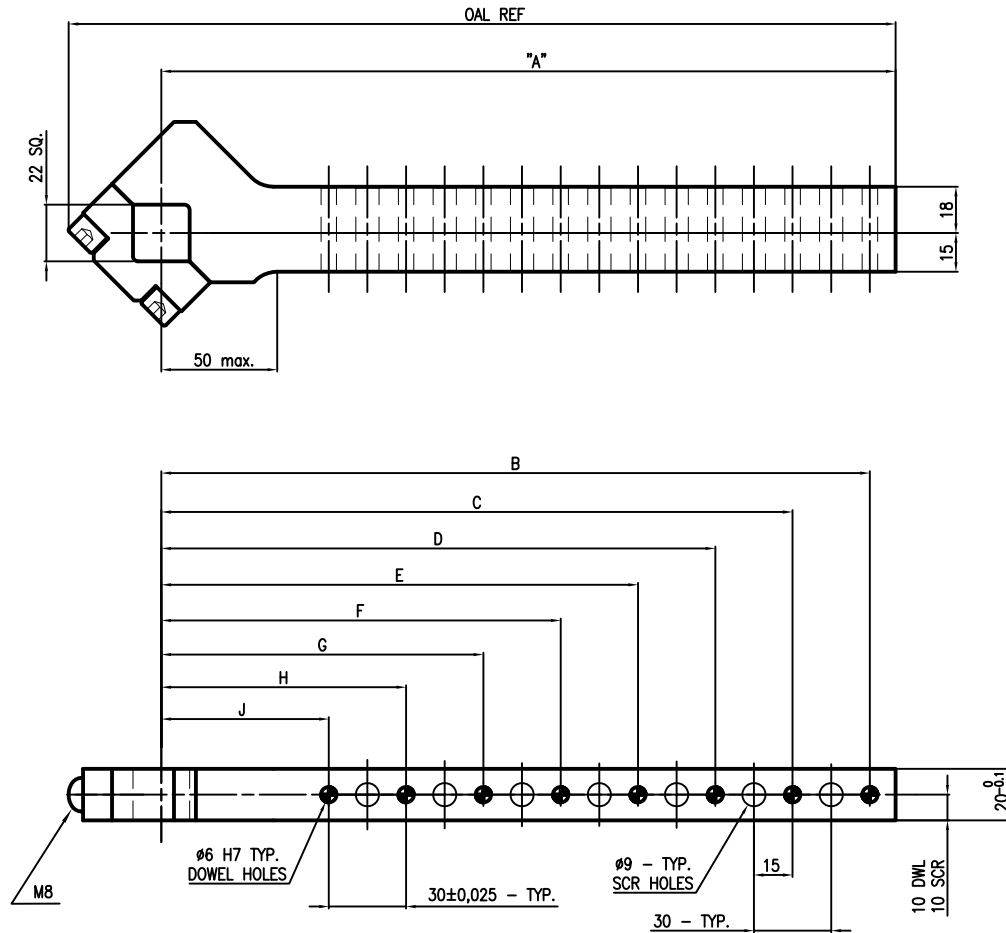


□ 19 mm, offset 0 mm



Code	N.A.A.M.S. Code	A	B Dowel	C	D Dowel	Weight Kg	OAL REF	Material
LKPACA236M	ACA236M	90	65			0.53	120	Steel
LKPACA237M	ACA237M	120	95	65		0.65	150	Steel
LKPACA238M	ACA238M	150	125	95	65	0.77	180	Steel

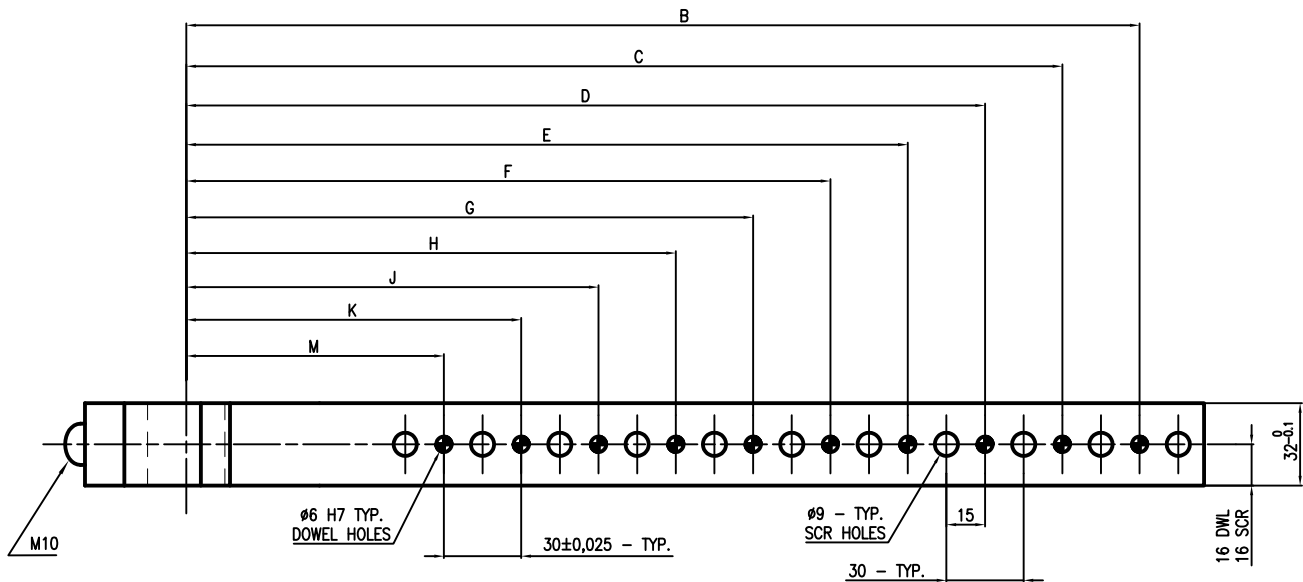
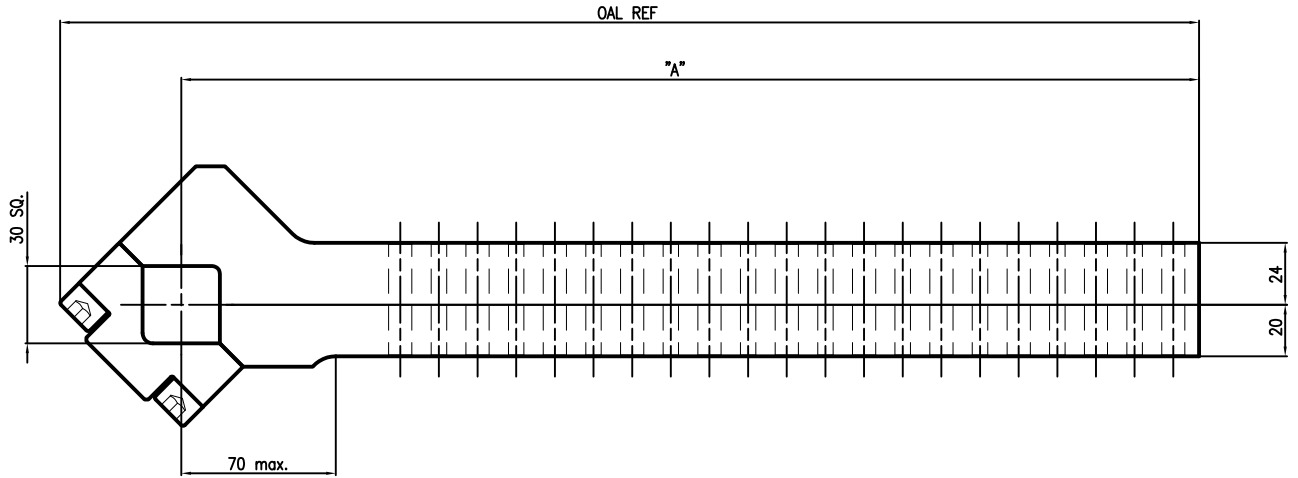
□22 mm, offset 0 mm



Code	N.A.A.M.S. Code	A	B Dowel	C	D Dowel	E	F Dowel	G	H Dowel	J	Weight Kg	OAL REF	Material
LKPGCA007M	GCA007M	135	125	95	65						0.91	171	Steel
LKPGCA008M	GCA008M	165	155	125	95	65					1.04	201	Steel
LKPGCA009M	GCA009M	195	185	155	125	95	65				1.17	231	Steel
LKPGCA010M	GCA010M	225	215	185	155	125	95	65			1.30	261	Steel
LKPGCA011M	GCA011M	255	245	215	185	155	125	95	65		1.43	291	Steel
LKPGCA012M	GCA012M	285	275	245	215	185	155	125	95	65	1.56	321	Steel

Subject to technical modifications without notice

□30 mm, offset 0 mm



Code	N.A.A.M.S. Code	A	B Dowel	C	D Dowel	E	F Dowel	G	H Dowel	J	K Dowel	M	Weight Kg	OAL REF	Material
LKPGCA110M	GCA0110M	155	130	100									2.28	202	Steel
LKPGCA111M	GCA111M	185	160	130	100								2.57	232	Steel
LKPGCA112M	GCA112M	215	190	160	130	100							2.87	262	Steel
LKPGCA113M	GCA113M	245	220	190	160	130	100						3.17	292	Steel
LKPGCA114M	GCA114M	275	250	220	190	160	130	100					3.47	322	Steel
LKPGCA115M	GCA115M	305	280	250	220	190	160	130	100				3.77	362	Steel
LKPGCA116M	GCA116M	335	310	280	250	220	190	160	130	100			4.07	382	Steel
LKPGCA117M	GCA117M	365	340	310	280	250	220	190	160	130	100		4.37	412	Steel
LKPGCA118M	GCA118M	395	370	340	310	280	250	220	190	160	130	100	4.67	442	Steel

Subject to technical modifications without notice