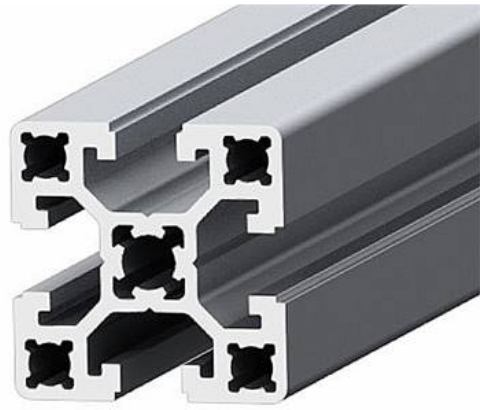
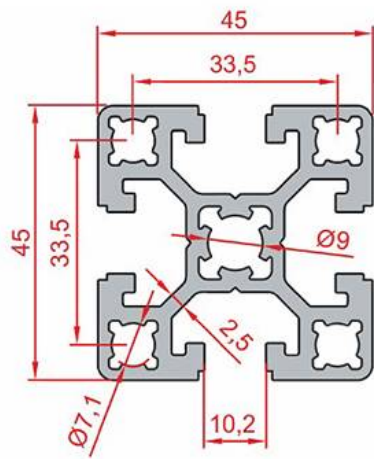


## 45X45 HEAVY SIGMA PROFILE



### General Specifications

Preferred for use on intermediate couplings of machine frames which require loading, as as on automation processes and bodies with pneumatic connection

Stock Code	Stock Name	External Dimensions	Material	L(mm)	Ix	Iy	Wx	Wy	Area	Mass
1.1.10.045045.01	45x45 Heavy Sigma Profile	45x45	6063	6000	15,65 cm <sup>4</sup>	15,65 cm <sup>4</sup>	6,9 cm <sup>3</sup>	6,9 cm <sup>3</sup>	7,63 cm <sup>2</sup>	2,06 Kg/m