



SERIE

ST

CILINDRI STOPPER
STOPPER CYLINDERS


ARTEC[®]
PNEUMATIC COMPONENTS

CARATTERISTICHE TECNICHE - TECHNICAL CHARACTERISTICS

Pressione di esercizio
Working pressure

2 ÷ 10 bar (semplice effetto - *single acting*)

Temperatura di esercizio
Working temperature

0 ÷ +80 °C (-20 °C con aria secca - *with dry air*)

Versioni - Versions

semplice effetto molla posteriore - *single acting rear spring*
doppio effetto molla posteriore - *double acting rear spring*
doppio effetto - *double acting*

Alesaggi - Bores

∅ 20 - 32 - 50 - 80

Corse - Strokes

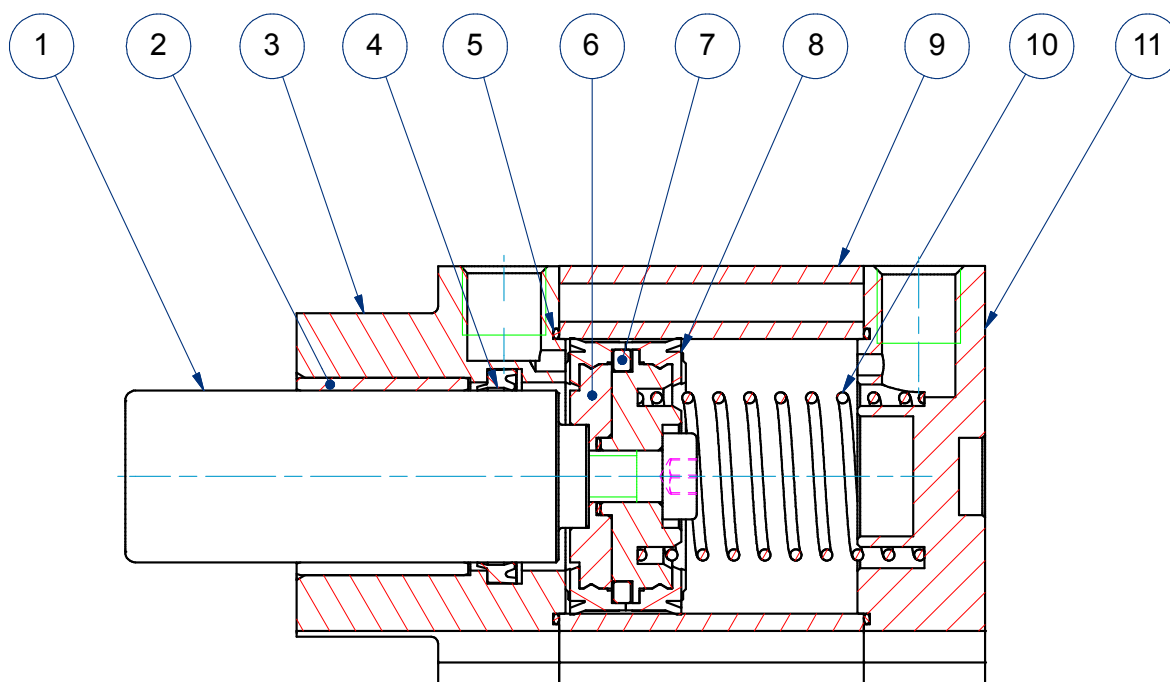
15 - 20 - 30

Fluido - Fluid

aria compressa filtrata, non lubrificata - *compressed filtered, non lubricated air*

CARATTERISTICHE COSTRUTTIVE - CONSTRUCTIVE CHARACTERISTICS

①	Stelo - Rod	acciaio inox cromato - <i>chromed stainless steel</i>
②	Boccola - Bush	acciaio+PTFE - <i>steel+PTFE</i>
③ ⑪	Testate - Covers	alluminio anodizzato - <i>anodized aluminium</i>
④ ⑧	Guarnizioni - Seals	poliuretano - <i>polyurethane</i>
⑤	O-ring	NBR
⑥	Pistone - Piston	alluminio - <i>aluminium</i>
⑦	Magnete - Magnet	plastroferrite - <i>rubber magnet</i>
⑨	Tubo - Tube	alluminio anodizzato - <i>anodized aluminium</i>
⑩	Molla - Spring	acciaio - <i>steel</i>
	Viti - Screws	acciaio zincato - <i>zinc coated steel</i>
	Paracolpo - Bumper	poliuretano - <i>polyurethane</i>



CHIAVE DI CODIFICA

KEY CODE

P S T		0 5 0 . 0 3 0 . G S . L		
		ALESAGGIO - BORE (Ø)	CORSA - STROKE (mm)	OPZIONE - OPTION
		020	015	EX ATEX II 2GD c T4
		032	020	
		050-080	030	STELO - ROD
		SERIE - SERIES		L liscio smooth
		semplice effetto molla posteriore single acting rear spring		F femmina female
		D doppio effetto con molla posteriore double acting with rear spring		R con rullino with roller
		D1 doppio effetto senza molla double acting without spring		GUARNIZIONI - SEALS
		VERSIONE - VERSION		GS guarnizioni standard standard seals
		ST STOPPER semplice effetto magnetico single acting magnetic STOPPER		
		SERIE - SERIES		
ISO 21287	P	tubo profilato con cave per sensori tube with slots for sensors		
UNITOP	A	tubo profilato con cave per sensori tube with slots for sensors		

SERIE
ST

ESECUZIONI A RICHIESTA - ON REQUEST

Stelo prolungato (WH) - Extended rod (WH)

Filetti speciali (dado stelo non fornito) - Special thread (without rod nut)

ATEX II 2GD c T4

FORZA TEORICHE DI TRAZIONE (P=6bar)

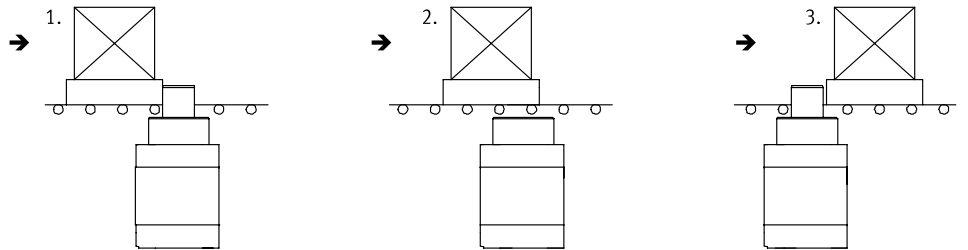
THEORETICAL FORCES OF TRACTION (P=6bar)

		Ø	020	032	050	080	
AST	PST	SPINTA - THRUST	[N]	188	482	1178	3014
		TRAZIONE - TRACTION	[N]	120	294	695	1837

SCHEMA DI FUNZIONAMENTO

DIAGRAM OF OPERATION

STELO LISCIO - SMOOTH ROD



SERIE
ST

STELO CON RULLINO - ROD WITH ROLLER

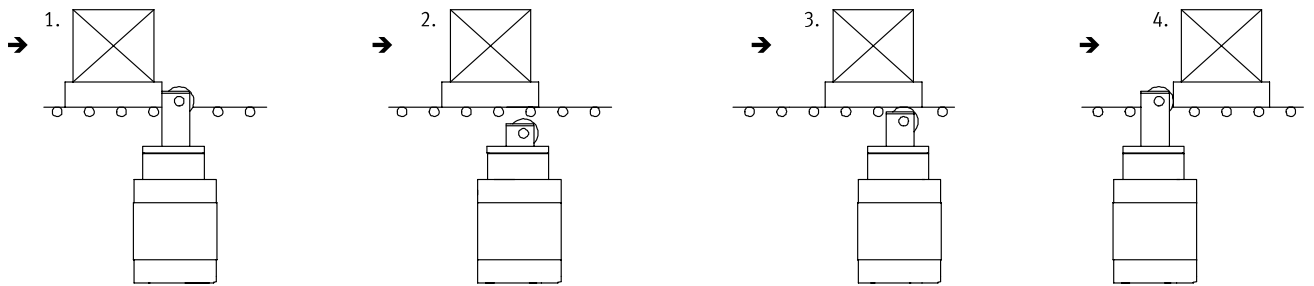
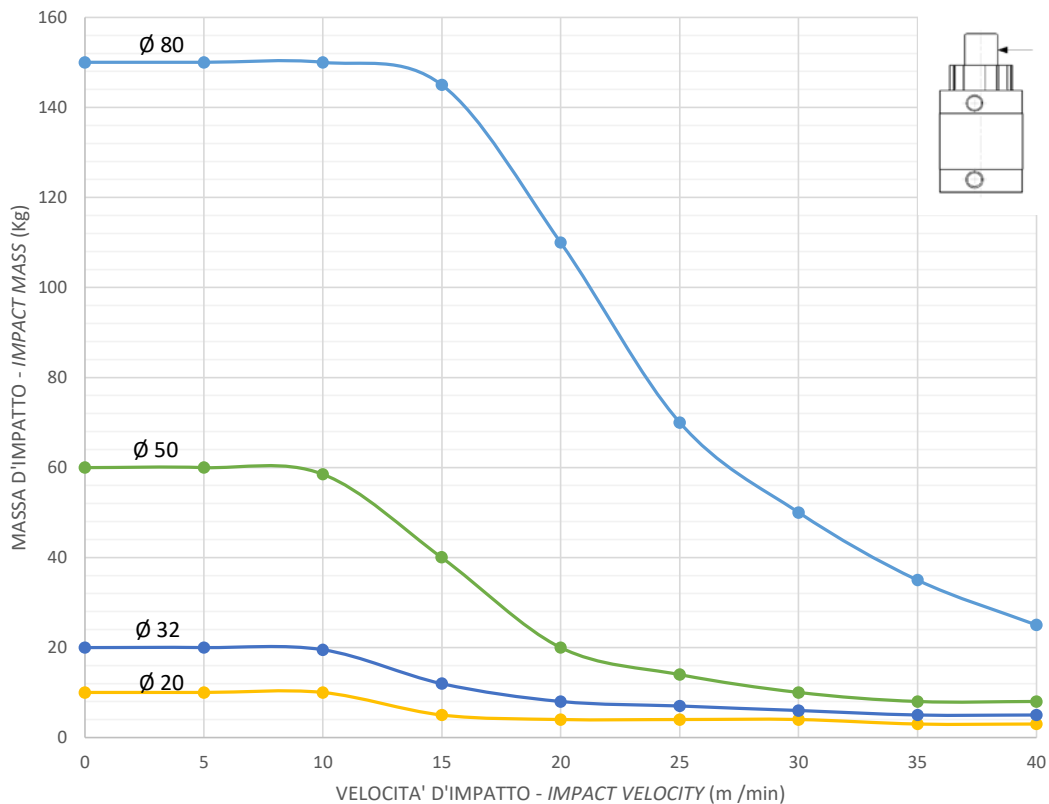


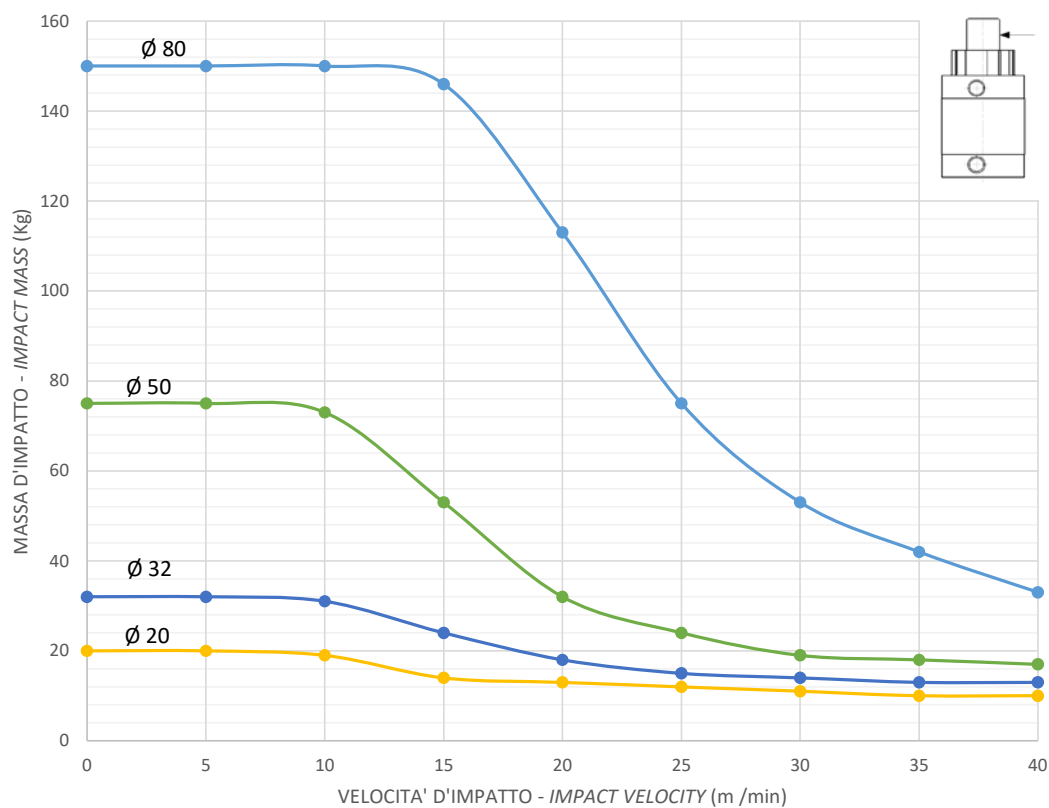
DIAGRAMMA CARICO AMMISSIBILE

ALLOWABLE LOAD

STELO LISCIO - SMOOTH ROD



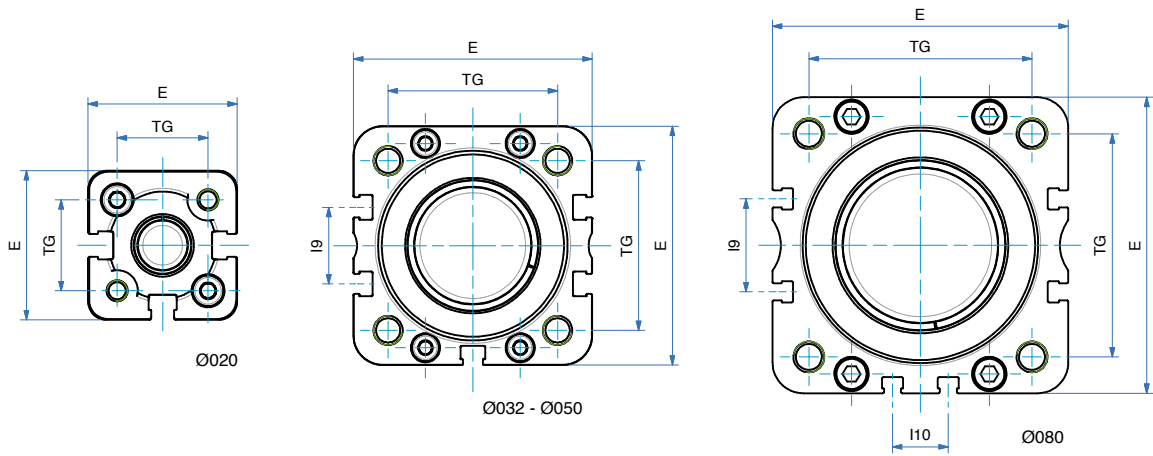
STELO CON RULLINO - ROD WITH ROLLER



CILINDRO STOPPER

STC

SERIE
ST



SEMPLICE EFFETTO MOLLA POSTERIORE

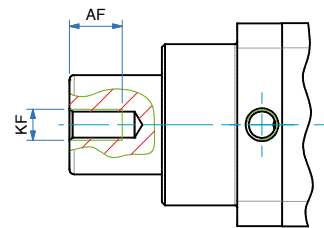
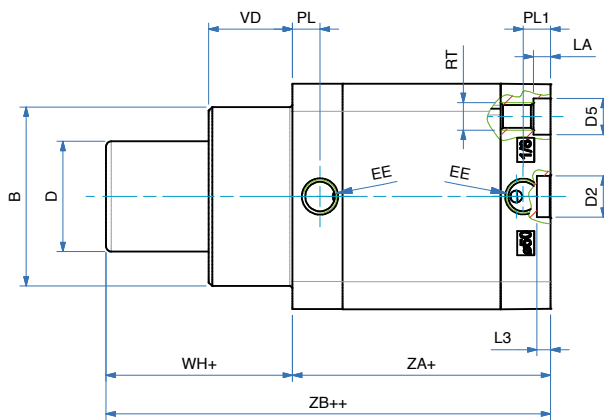
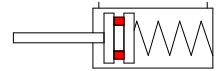
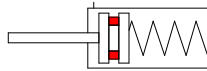
PST

DOPPIO EFFETTO MOLLA POSTERIORE

PSTD

SINGLE ACTING REAR SPRING

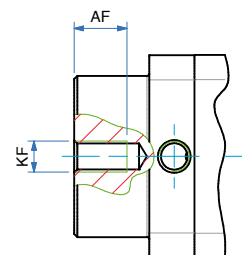
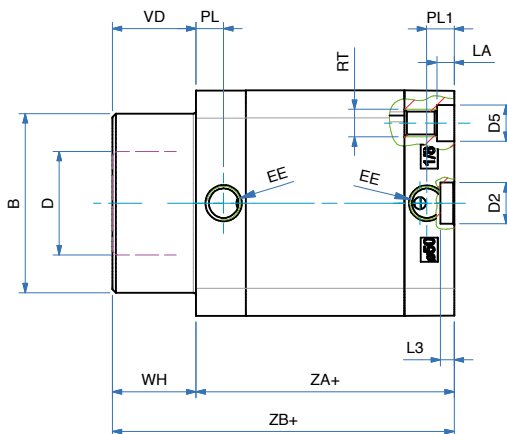
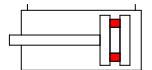
DOUBLE ACTING REAR SPRING



DOPPIO EFFETTO SENZA MOLLA

PSTD1

DOUBLE ACTING WITHOUT SPRING



CILINDRI STOPPER
STOPPER CYLINDERS

DIMENSIONI - DIMENSIONS				
Ø	020	032	050	080
AF	15	15	17	20
Ø B	26	38	52	76
Ø D	12	20	32	50
Ø D2	9	9	12	12
Ø D5	7,5	9	10,5	13,5
E	36	49	65,5	95,5
EE	M5	G1/8"	G1/8"	G1/8"
I9	-	10,8	21	30
I10	-	-	-	18
KF	M6	M8	M10	M12
LA	4,5	5	5	3
L3	3	3	4	4
PL	9	8	8	8
PL1	7,5	8	8	8
RT	M5	M6	M8	M10
TG	22	32,5	46,5	72
VD	11,5	16,5	24,5	15
WH	11,5	16,5	24,5	15
WH+	11,5	16,5	24,5	15
ZA+	38	44	45	96
ZB+	49,5	60,5	69,5	111
ZB++	49,5	60,5	69,5	111

Ø	CORSE STANDARD - STANDARD STROKES
020	15
032	20
050	30
080	30

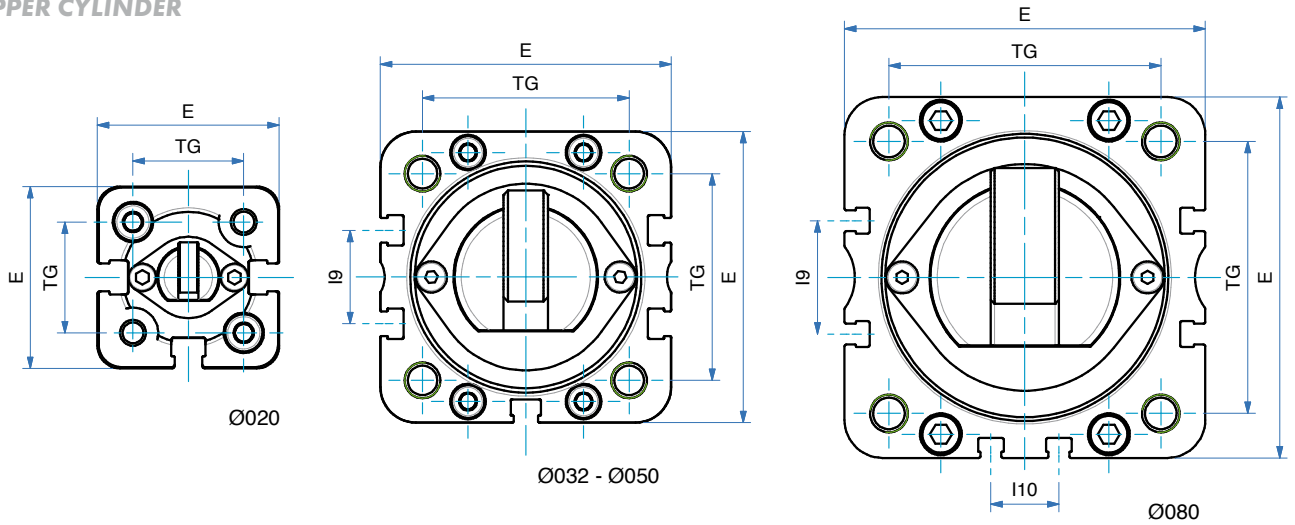
SERIE

ST

CILINDRO STOPPER

PST-R

STOPPER CYLINDER



SERIE
ST

S.E. MOLLA POSTERIORE CON RULLINO

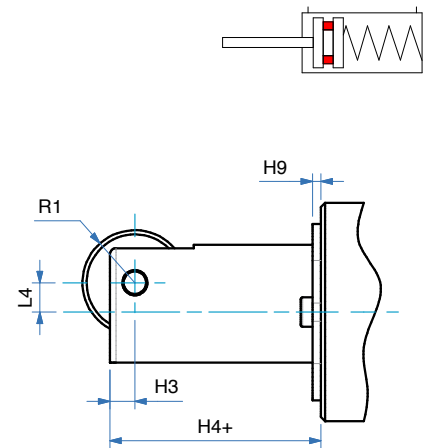
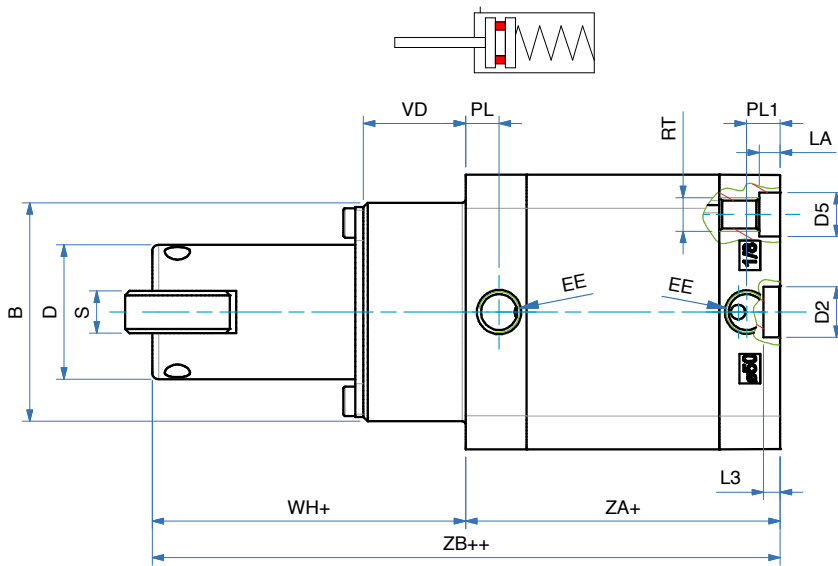
PST-R

D.E. MOLLA POSTERIORE CON RULLINO

PSTD-R

SINGLE ACTING REAR SPRING WITH ROLLER

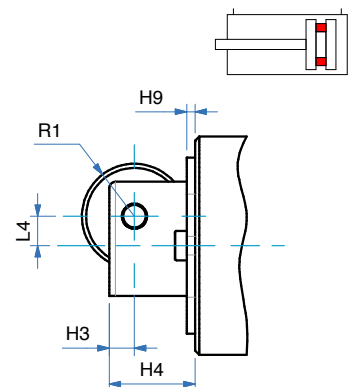
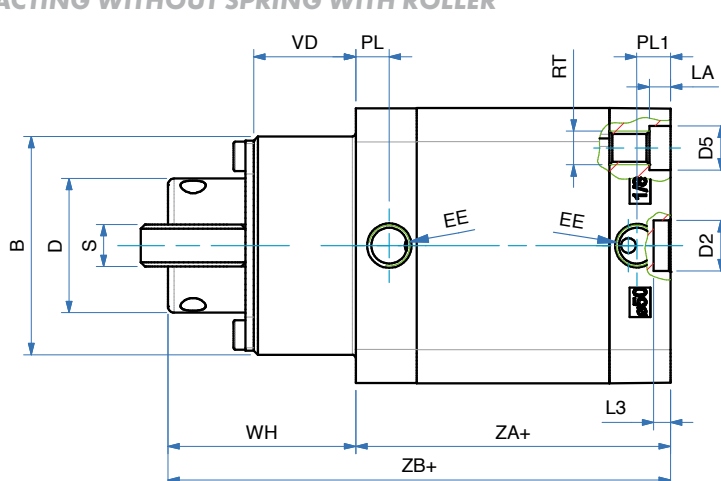
DOUBLE ACTING REAR SPRING WITH ROLLER



DOPPIO EFFETTO SENZA MOLLA CON RULLINO

PSTD1-R

DOUBLE ACTING WITHOUT SPRING WITH ROLLER



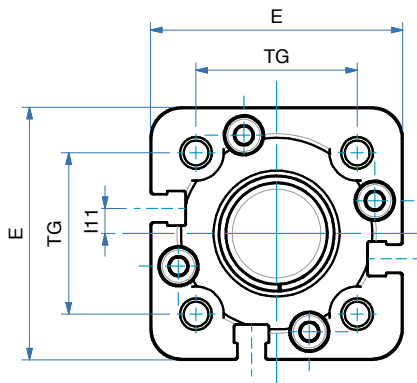
STOPPER CYLINDERS

DIMENSIONI - DIMENSIONS				
Ø	020	032	050	080
Ø B	26	38	52	76
Ø D	12	20	32	50
Ø D2	9	9	12	12
Ø D5	7,5	9	10,5	13,5
E	36	49	65,5	95,5
EE	M5	G1/8"	G1/8"	G1/8"
H3	3	6	6	10
H4	9	18	20,5	33
H4+	9	18	20,5	33
H9	2	2	2	3
I10	-	-	-	18
I9	-	10,8	21	30
L3	3	3	4	4
L4	2	3,5	7	11
LA	4,5	5	5	3
PL	9	8	8	8
PL1	7,5	8	8	8
R1	5	9	12,5	18
RT	M5	M6	M8	M10
S	4	8	10	18
TG	22	32,5	46,5	72
VD	11,5	16,5	24,5	15
WH	20,5	34,5	45	48
WH+	20,5	34,5	45	48
ZA+	38	44	45	96
ZB+	58,5	78,5	90	144
ZB++	58,5	78,5	90	144

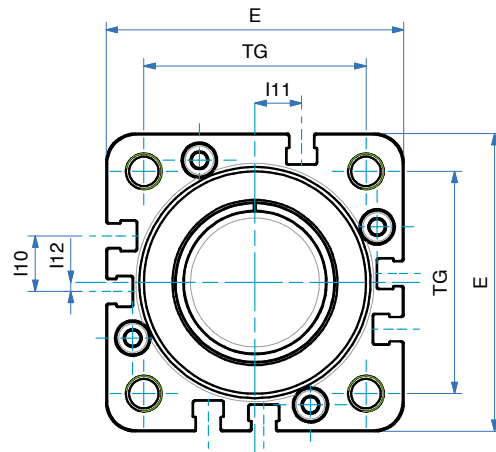
Ø	CORSE STANDARD - STANDARD STROKES
020	15
032	20
050	30
080	30

CILINDRO STOPPER

STOPPER CYLINDER



Ø32



Ø50

SERIE
ST

SEMPLICE EFFETTO MOLLA POSTERIORE

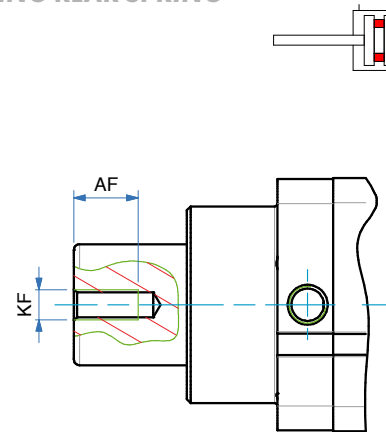
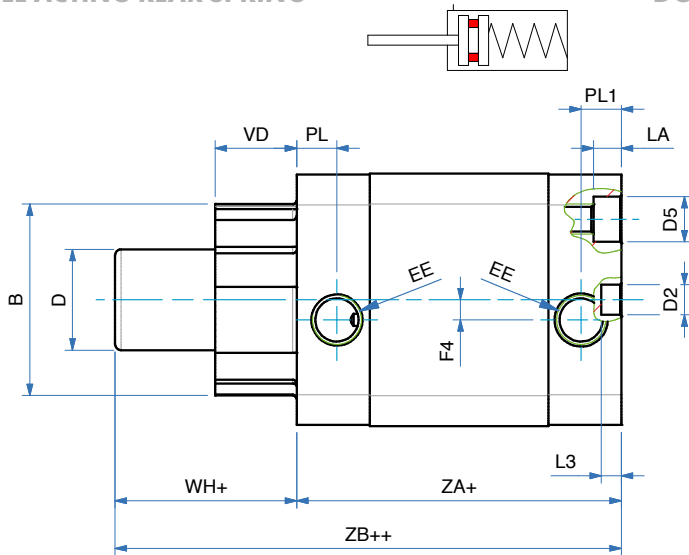
AST

DOPPIO EFFETTO MOLLA POSTERIORE

ASTD

SINGLE ACTING REAR SPRING

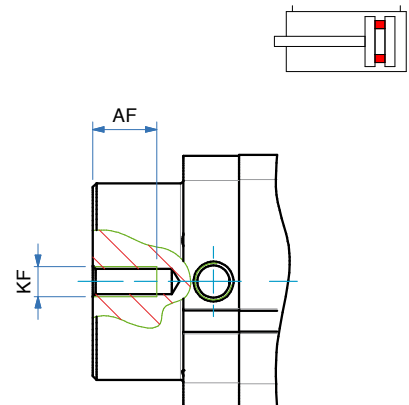
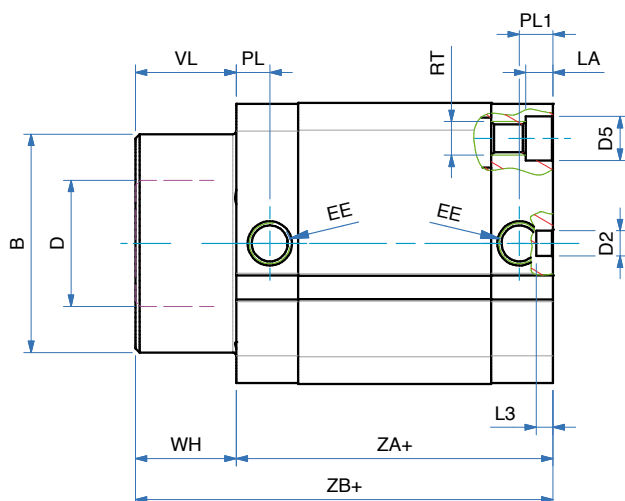
DOUBLE ACTING REAR SPRING



DOPPIO EFFETTO SENZA MOLLA

ASTD1

DOUBLE ACTING WITHOUT SPRING



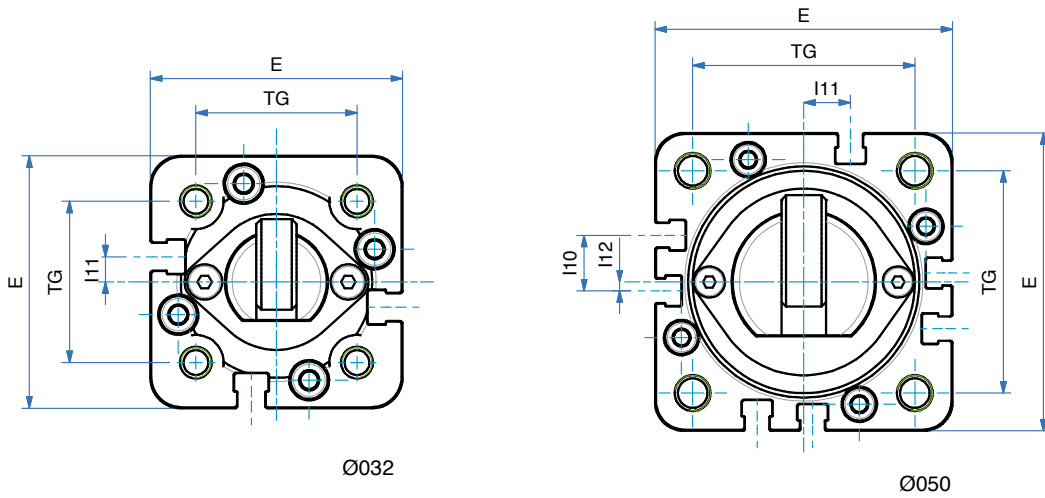
CILINDRI STOPPER
STOPPER CYLINDERS

DIMENSIONI - DIMENSIONS		
Ø	032	050
AF	15	17
Ø B	38	52
Ø D	20	32
Ø D2	6	6
Ø D5	9	10,5
E	50	67
EE	G1/8"	G1/8"
F4	4	-
I10	-	12,5
I11	5	10,5
I12	-	2
KF	M6	M8
LA	5,5	6,5
L3	4	4
PL	8	8
PL1	8	8
RT	M6	M8
TG	32	50
VD	16	24
WH	16	24
WH+	16	24
ZA+	44,5	45,5
ZB+	60,5	69,5
ZB++	60,5	69,5

Ø	CORSE STANDARD - STANDARD STROKES	
032	20	
050	30	

SERIE

ST



SERIE
ST

S. E. MOLLA POSTERIORE CON RULLINO

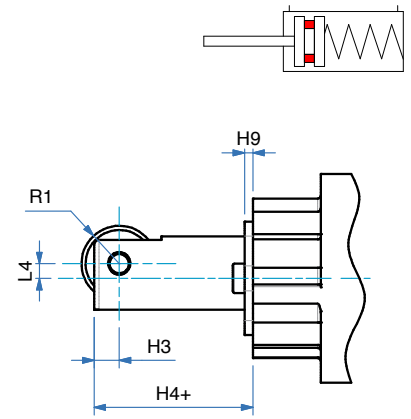
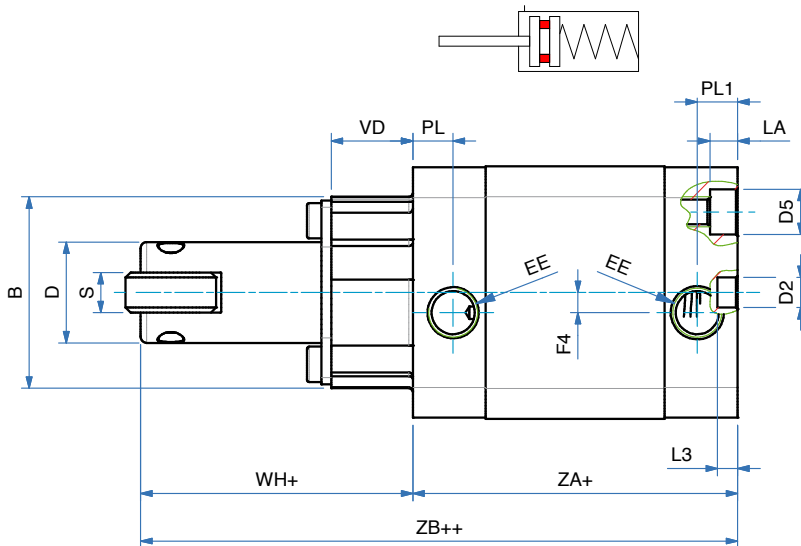
AST-R

D. E. MOLLA POSTERIORE CON RULLINO

ASTD-R

SINGLE ACTING REAR SPRING WITH ROLLER

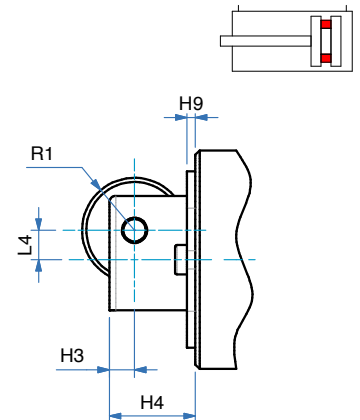
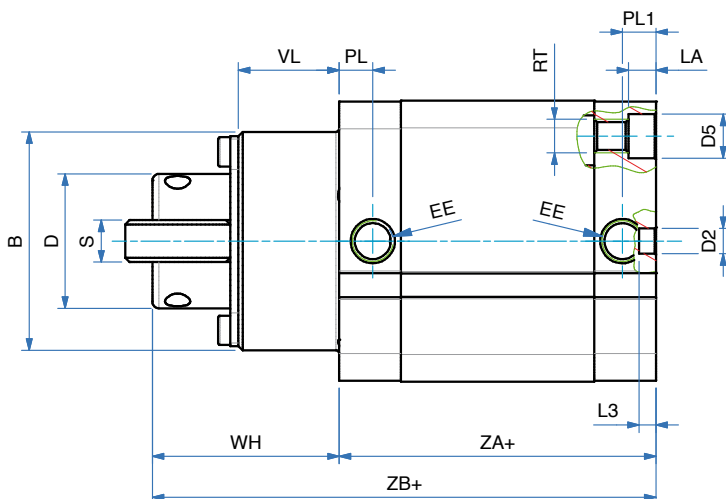
DOUBLE ACTING REAR SPRING WITH ROLLER



DOPPIO EFFETTO SENZA MOLLA CON RULLINO

ASTD1-R

DOUBLE ACTING WITHOUT SPRING WITH ROLLER



STOPPER CYLINDERS

DIMENSIONI - DIMENSIONS		
Ø	032	050
Ø B	38	52
Ø D	20	32
Ø D2	6	6
Ø D5	9	10,5
E	50	67
EE	G1/8"	G1/8"
F4	4	-
H3	6	6
H4	18	20,5
H4+	18	20,5
H9	2	2
I10	-	12,5
I11	5	10,5
I12	-	2
L3	4	4
L4	3,5	7
LA	5,5	6,5
PL	8	8
PL1	8	8
R1	9	12,5
RT	M6	M8
S	8	10
TG	32	50
VD	16	24
WH	34	44,5
WH+	34	44,5
ZA+	44,5	45,5
ZB+	78,5	90
ZB++	78,5	90

Ø	CORSE STANDARD - STANDARD STROKES
032	20
050	30

