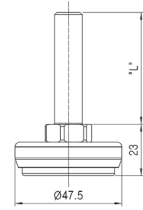


AD50 Installation support, rubber type with foot Ø50 mm



Art. No.	Name	Ø Foot (D)	Length (L)	Thread	Packaging unit
100098	AD50RAN	50 mm	50 mm	1/2"-12N (Type A)	80 pcs
100095	AD50RAN-E				
100099	AD50RBN	100 mm			
100100	AD50RBN-E				

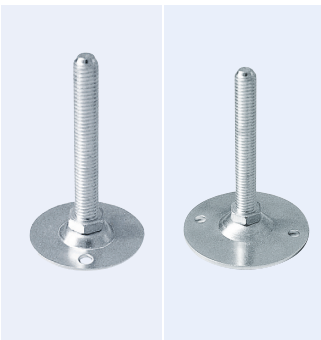


AD30M... AD45M... Installation support for drive-in bush M10 & M12



Art. No.	Name	Ø Foot (D)	Length	Thread		
107530	AD30M10-35	30 mm	35 mm	M10		
107531	AD30M10-70		70 mm			
118190	AD30M12-100	31 mm	100 mm	M12		
107528	AD45M10-35PA	45 mm	35 mm	M10	Foot black painted	
107529	AD45M10-70PA		70 mm			
119168	AD45M12-100		100 mm			M12

AD47M... AD60... Installation support thread M10

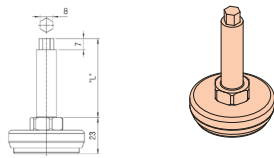


Art. No.	Name	Ø Foot (D)	Length	Thread
107533	AD47M10-70	47 mm	70 mm	M10
107532	AD60M10-70	60 mm		

AD50RAN-H Installation support 1/2"



• Foot Ø50 mm with rubber insert

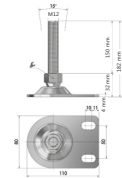


Length: 100 mm
Weight: 120 g
Packaging unit: 60 pcs

BSF80 Adjustable foot for ground mounting M12 x 1.50

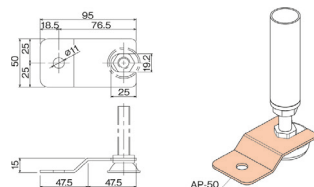


• Foot made of steel, chromed, thread with nut and washer, galvanised steel



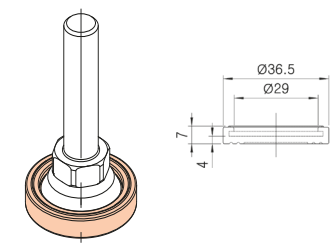
Thread length: 150 mm
Weight: 35 g
Packaging unit: 150 pcs

AP-50 Ground mounting plate



Weight: 52 g
Packaging unit: 220 pcs

RB-AD37 Rubber foot for AD32WB/WC



Weight: 6 g
Packaging unit: 1500 pcs