

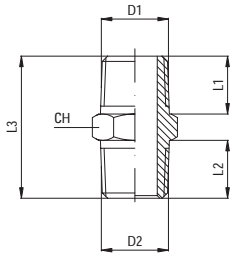
## RX 12

Nipplo Conico

Nipple, taper

Mamelon conique

Doppelnippel, kegelig



Tipo	D1	D2	L1	L2	L3	CH	9
12 18 18	R1/8	R1/8	7,5	7,5	20	12	
12 18 14	R1/8	R1/4	7,5	11	23,5	14	
12 14 14	R1/4	R1/4	11	11	27	14	
12 14 38	R1/4	R3/8	11	11,5	27,5	17	
12 38 38	R3/8	R3/8	11,5	11,5	28	17	
12 38 12	R3/8	R1/2	11,5	14	31,5	22	
12 12 12	R1/2	R1/2	14	14	34	22	

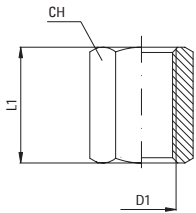
## RX 13

Manicotto

Joint Piece

Manchon

Muffe



Tipo	D1	L1	CH	9
13 00 18	G1/8	15	14	
13 00 14	G1/4	22	17	
13 00 38	G3/8	24	22	
13 00 12	G1/2	30	27	

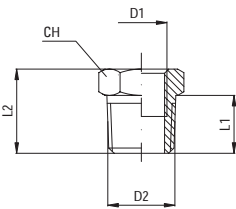
## RX 14

Riduzione F-M Conica

Taper Female-Male reducer

Réduction Femelle-Mâle, conique

Reduzierstück, Auf-Einschraub, kegelig



Tipo	D1	D2	L1	L2	CH	9
14 18 14	G1/8	R1/4	11	16	14	
14 18 12	G1/8	R1/2	14	19,5	22	
14 14 38	G1/4	R3/8	11,5	16,5	17	
14 14 12	G1/4	R1/2	14	19,5	22	
14 38 12	G3/8	R1/2	14	19,5	22	

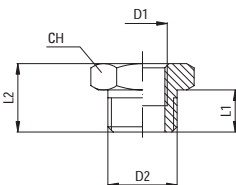
## RX 15

Riduzione F-M Cilindrica

Parallel Female-Male reducer

Réduction Femelle-Mâle, cylindrique

Reduzierstück, Auf-Einschraub, zylindrisch



Tipo	D1	D2	L1	L2	CH	9
15 M5 18	M5x0,8	G1/8	6	10,5	14	
15 18 14	G1/8	G1/4	8	13	17	
15 14 38	G1/4	G3/8	9	14	19	