

GU 10-11

Innesto rapido multipresa

Multi socket quick coupling

Coupleur multiprofil

Multiprofilkupplung

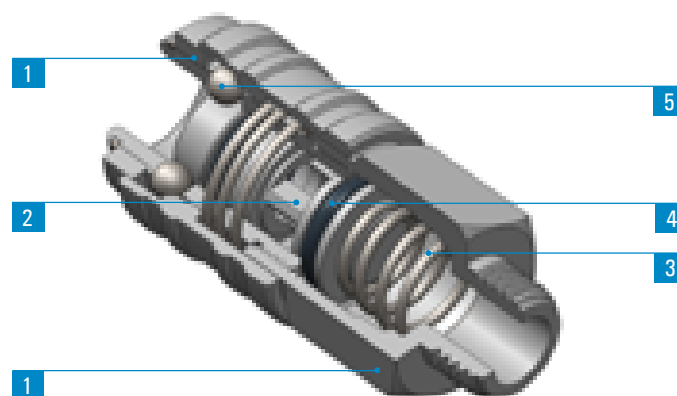
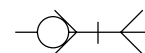
| 1 | 2 | 3 | 4 | 5 | GU 11 |
|--|--|--|--|--|---|
| Corpo Body Corps Körper | Otturatore Valve Clapet Ventil | Molle Springs Ressorts Feder | Guarnizioni Seals Joint d'étanchéité Dichtung | Sfere Balls Billes Kugel | Innesti Plugs Embouts Stecker |
| Ottone UNI EN 12164 CW614N Nichelato Brass UNI EN 12164 CW614N Nickel plated Laiton UNI EN 12164 CW614N Nickelé Ms Vernickelt UNI EN 12164 CW614N | Ottone UNI EN 12164 CW614N Nichelato Brass UNI EN 12164 CW614N Nickel plated Laiton UNI EN 12164 CW614N Nickelé Ms Vernickelt UNI EN 12164 CW614N | Acciaio Inox AISI 302 Stainless Steel AISI 302 Acier Inox AISI 302 Edelstahl AISI 302 | NBR NBR NBR NBR | Acciaio Inox AISI 420 Stainless Steel AISI 420 Acier Inox AISI 420 Edelstahl AISI 420 | Ottone Nichelato Brass ickel plated Laiton Nickelé Ms Vernickelt |



-20°C + 80°C

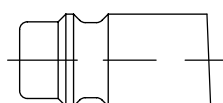


0 + 15 bar



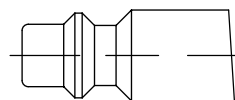
Intercambiabilità con i profili
Suitable with following plugs profiles
Interchangeable avec les suivants profils
Austauschbar mit folgenden Profilen

Portata
Flow rate
Débit
Durchfluß
(6 bar - Δp = 1bar)



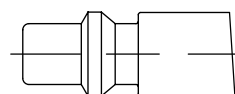
Profilo Europeo
European Profile
Profil européen
Europäisches Profil

820



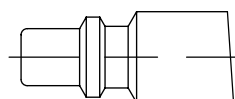
Profilo ISO 6150 B
ISO 6150 B Profile
Profil ISO 6150 B
ISO 6150 B Profil

715



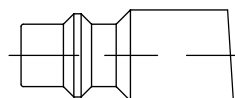
Profilo Svedese
Standard Swedisch Profile
Profil Standard Suédois
Standard schwedisches Profil

725



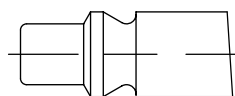
Profilo Italiano
Standard Italian Profile
Profil Standard Italien
Standard Italienisches Profil

670



Profilo MIL C4109
MIL C4109 Profile
Profil MIL C4109
MIL C4109 Profil

715



Profilo ARO 210
ARO 210 Profile
Profil ARO 210
ARO 210 Profil

705

Scala 1:1 - Scale 1:1 - Echelle 1:1 - Maßstab 1:1

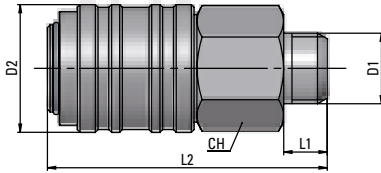
GU 10-11

Innesto rapido con filetto maschio

Male coupling

Coupleur mâle

Einschraubkupplung



| Type | D1 | D2 | L1 | L2 | CH | g ΔΔ |
|----------|------|------|----|------|----|------|
| 11 00 14 | G1/4 | 23,5 | 10 | 51,5 | 20 | 90 |
| 11 00 38 | G3/8 | 23,5 | 11 | 51,5 | 20 | 93 |
| 11 00 12 | G1/2 | 23,5 | 11 | 51,5 | 24 | 118 |

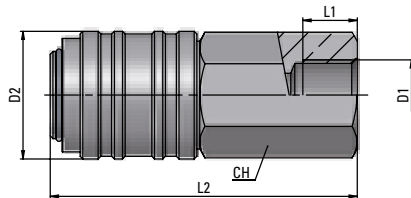
GU 10-12

Innesto rapido con filetto femmina

Female coupling

Coupleur femelle

Aufschraubkupplung



| Type | D1 | D2 | L1 | L2 | CH | g ΔΔ |
|----------|------|------|----|------|----|------|
| 12 00 14 | G1/4 | 23,5 | 10 | 56,5 | 20 | 109 |
| 12 00 38 | G3/8 | 23,5 | 11 | 58 | 20 | 103 |
| 12 00 12 | G1/2 | 23,5 | 11 | 59,5 | 24 | 134 |

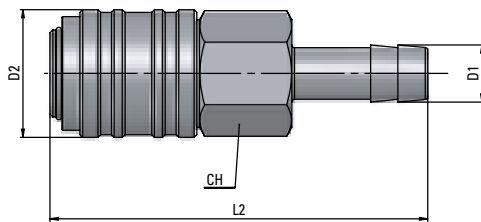
GU 10-13

Innesto rapido con portagomma

Coupling with hose connection

Coupleur avec douille cannelée

Kupplung mit Schlauchtülle



| Type | D1 | D2 | L2 | CH | g ΔΔ |
|----------|----|------|------|----|------|
| 13 06 00 | 6 | 23,5 | 69,5 | 20 | 91 |
| 13 09 00 | 9 | 23,5 | 69,5 | 20 | 93 |
| 13 13 00 | 13 | 23,5 | 69,5 | 20 | 107 |

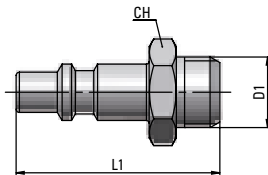
GU 11-20

Innesto Italia con filetto maschio

Male plug, italian profile

Embout mâle, profil italien

Einschraubverschlussnippel, italienisches Profil



| Type | D1 | L1 | CH | g ΔΔ |
|----------|------|------|----|------|
| 20 00 14 | G1/4 | 37,5 | 14 | 19,1 |
| 20 00 38 | G3/8 | 40 | 19 | 28 |
| 20 00 12 | G1/2 | 40,5 | 24 | 36,2 |

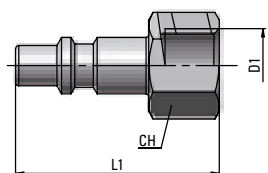
GU 11-21

Innesto Italia con filetto femmina

Female plug, italian profile

Embout femelle, profil italien

Aufschraubverschlussnippel, italienisches Profil



| Type | D1 | L1 | CH | g ΔΔ |
|----------|------|----|----|------|
| 21 00 14 | G1/4 | 39 | 17 | 23 |
| 21 00 38 | G3/8 | 41 | 19 | 26 |
| 21 00 12 | G1/2 | 44 | 25 | 51,1 |