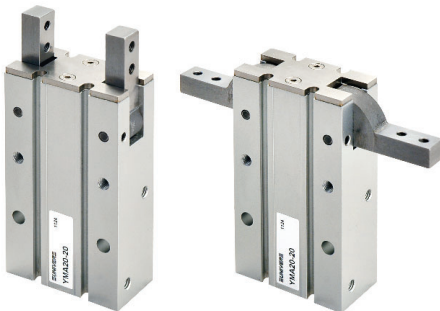


**Angular Pneumatic Gripper**
**2**
**YMA11**


Part No.	Ø	Gripping force (Nm)*		Max arm length L (mm)	Sensor
		Opening	Closing		
YMA11-10	10	0,25	0,2	30	DF-T + DF-R002
YMA11-16	16	0,6	0,45	40	
YMA11-20	20	1,15	0,85	60	
YMA11-25	25	2,25	1,7	70	

\* = Gripping force at 5 bar  
 L = Gripping point 30 mm

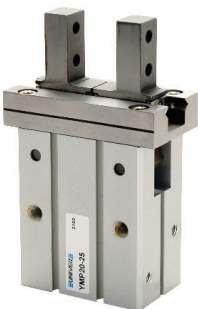
Working pressure: 1,5 ÷ 7 bar  
 Ambient temperature: -5 ÷ 60 °C  
 Max frequency (cycles/min): 180  
 Opening angle: +30° -10°

**180° Angular Pneumatic Gripper**
**YMA20**


Part No.	Ø	Gripping force (N)*	Max arm length L (mm)	Sensor
YMA20-10	10	6	60	DF-T...
YMA20-16	16	20	70	
YMA20-20	20	36	80	
YMA20-25	25	78	90	

\* = Gripping force at 5 bar  
 L = Gripping point 30 mm

Working pressure: 2 ÷ 6 bar  
 Ambient temperature: -10 ÷ 60 °C  
 Max frequency (cycles/min): 60  
 Repeatability: ± 0,2  
 Opening angle: +180°~182° / -3°

**Parallel Pneumatic Gripper with Linear Guide**
**YMP20**


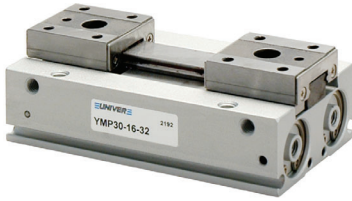
Part No.	Ø	Pressure (bar)	Max frequency (cycles/min)	Repeatability (mm)	Gripping force (N)*		Stroke open/close (mm)	Sensor
					Opening	Closing		
YMP20-10	10	2 ÷ 7	100	± 0,01	16	11	4	DF-T...
YMP20-16	16	1 ÷ 7	100	± 0,01	44	32	6	
YMP20-20	20	1 ÷ 7	100	± 0,01	65	42	10	
YMP20-25	25	1 ÷ 7	100	± 0,01	110	67	14	
YMP20-32	32	1 ÷ 7	60	± 0,02	193	160	22	
YMP20-40	40	1 ÷ 7	60	± 0,02	318	260	30	

\* = Gripping force at 5 bar, gripping point 30 mm

Ambient temperature: 0 ÷ 60 °C

Low Profile Parallel Pneumatic Gripper with Linear Guide

■ YMP30



Part No.	Ø	Max frequency (cycles/min)	Gripping force (N)*		Stroke (mm)	Sensor
			Opening	Closing		
YMP30012	12	100	48	48	12-24-48	DF-T...
YMP30016	16		91	91	16-32-64	
YMP30020	20		138	138	20-40-80	

\* = Gripping force at 5 bar, gripping point 30 mm

Working pressure: 1,5 ÷ 7 bar  
Ambient temperature: 0 ÷ 60 °C

Wide-type Parallel Pneumatic Gripper

■ YMP40



Part No.	Ø	Max frequency (cycles/min)	Gripping force (N)*		Stroke (mm)	Sensor
			Opening	Closing		
YMP40010	10	40	14	14	20-40-60	DF-T + DF-R002
YMP40016	16	40	44	44	30-60-80	
YMP40020	20	40	77	77	40-80-100	
YMP40025	25	40	128	128	50-100-120	
YMP40032	32	20	227	227	70-120-160	

\* = Gripping force at 5 bar, gripping point 30 mm

Working pressure: 1,5 ÷ 6 bar  
Ambient temperature: -10 ÷ 60 °C  
Repeatability: ±0,1

Self-centering 3 Jaw Pneumatic Gripper

■ YMP50



Part No.	Ø	Pressure (Bar)	Max frequency cycles/min	Gripping force (N)*		Stroke open/close (mm)	Sensor
				Opening	Closing		
YMP50-16	16	2 ÷ 6	120	16	14	4	DF-T...
YMP50-20	20	2 ÷ 6	120	28	25	4	
YMP50-25	25	2 ÷ 6	120	46	41	6	
YMP50-32	32	2 ÷ 6	60	81	73	8	DF-T + DF-R002
YMP50-40	40	2 ÷ 6	60	127	117	8	
YMP50-50	50	2 ÷ 6	60	204	187	12	
YMP50-63	63	2 ÷ 6	60	359	332	16	DF-...
YMP50-80	80	2 ÷ 6	30	520	495	20	
YMP50-100	100	2 ÷ 6	30	775	745	24	
YMP50-125	125	2 ÷ 6	30	1310	1265	32	

\* = Gripping force at 5 bar, gripping point 20 mm (Ø16-25) 30 mm (Ø 32÷63) 50 mm (Ø 80 ÷125)

Ambient temperature: -10 ÷ 60 °C  
Repeatability: ±0,01