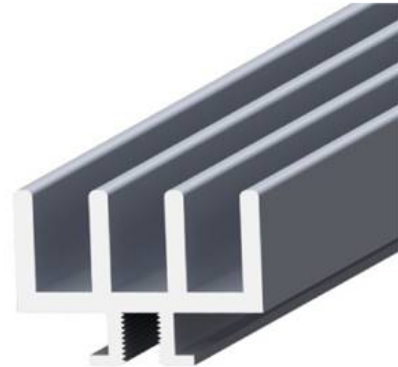
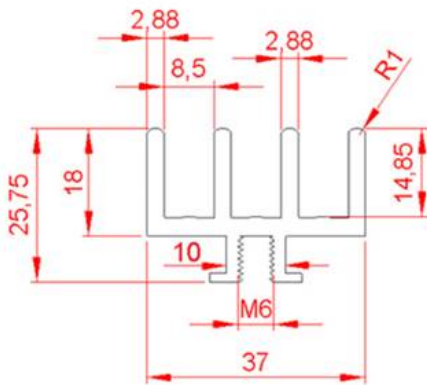


## 18X37 SLIDE PROFILE K10



## General Specifications

Designed for use of slide doors on cabins and compartments, it ensures significantly easier assembly.  
 Can constitute reliable connection through anchoring with M6 bolt wherever required on slot of profiles in slot 10 series.

Stock Code	Stock Name	External Dimensions	Material	L(mm)	Ix	Iy	Wx	Wy	Area	Mass
1.2.00.018037.00	18x37 Slide Profile K10	18x37	6063	6000	4,15 cm <sup>4</sup>	1,37 cm <sup>4</sup>	cm <sup>3</sup>	cm <sup>3</sup>	3,28 cm <sup>2</sup>	0,89 Kg/mt